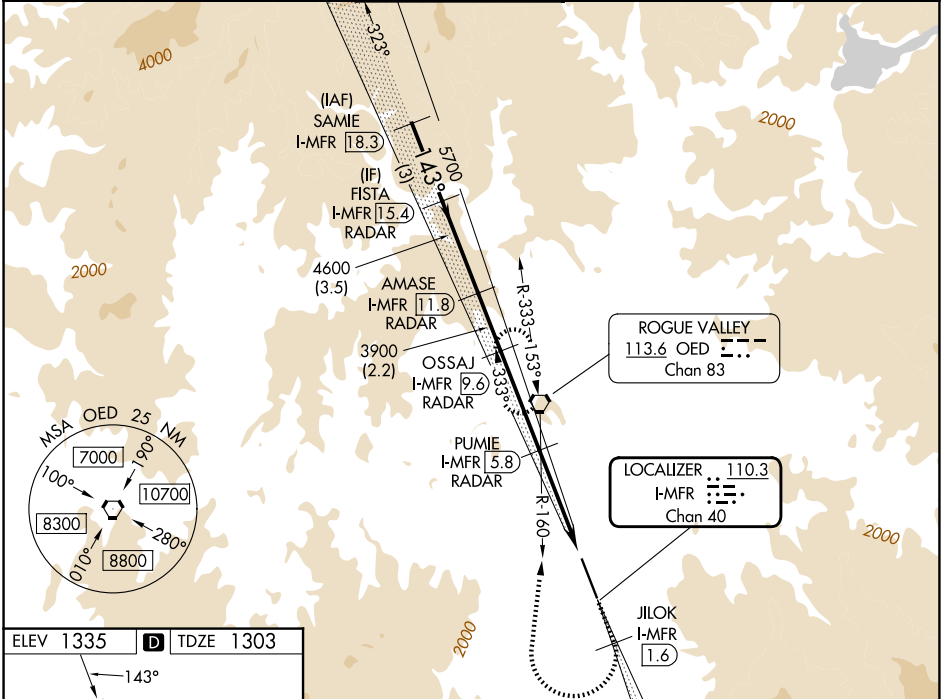


LOC/DME I-MFR <b>110.3</b> Chan <b>40</b>	APP CRS <b>143°</b>	Rwy Ldg TDZE Apt Elev	<b>8800</b> <b>1303</b> <b>1335</b>
---	------------------------	-----------------------------	---

# ILS or LOC RWY 14

ROGUE VALLEY INTL/MEDFORD (MFR)

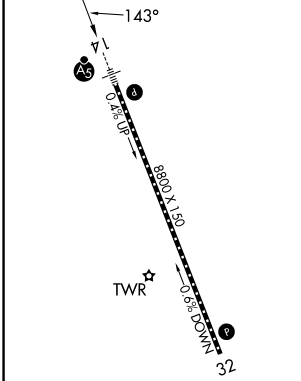
DME required. DME or RADAR required for procedure entry.		MALS R	MISSED APPROACH: Climb to 6600 on I-MFR SE course to JILOK/I-MFR 1.6 DME and climbing right turn on heading 350° and on OED VORTAC R-160 to OED VORTAC and hold, continue climb-in-hold to 6600. #Missed approach requires minimum climb of 331 feet per NM to 4100.	
Circling NA for Cats C and D northeast of Rwy 14-32. When Medford altimeter setting not received, procedure NA. For inop ALS, increase S-ILS 14 visibility to 1½ SM, increase S-LOC 14# Cats C and D visibility to RVR 5500, increase S-LOC 14 Cats C and D visibility to 2½ SM.				
ATIS <b>127.25</b>	CASCADE APP CON* <b>124.3 379.9</b>	MEDFORD TOWER* <b>119.4 (CTAF) 0257.8</b>	GND CON <b>121.8</b>	UNICOM <b>122.95</b>



NW-1, 14 MAY 2026 to 11 JUN 2026

NW-1, 14 MAY 2026 to 11 JUN 2026

ELEV 1335	<b>D</b>	TDZE 1303
-----------	----------	-----------



- CL Rwy 14-32 **1**
- TDZ/CL Rwy 14 **1**
- REIL Rwy 32 **1**
- HIRL Rwy 14-32 **1**

VGSi and ILS glidepath not coincident (VGSi Angle 3.00/TCH 73).		6600	JILOK I-MFR 1.6	hdg 350°	OED R-160	OED
SAMIE I-MFR 18.3	FISTA I-MFR 15.4	AMASE I-MFR 11.8	OSSAJ I-MFR 9.6	PUMIE I-MFR 5.8	*LOC only.	
7000	5700	4600	3900	*2660	*I-MFR 2.6	I-MFR 1.6
GS 3.00° TCH 58						
3 NM		3.5 NM		2.2 NM		3.8 NM

CATEGORY	A	B	C	D
S-ILS 14#		1503/18	200 (200-½)	
S-ILS 14		1929-1¾	626 (600-1¾)	
S-LOC 14#	1680/24	377 (400-½)	1680/35	377 (400-¾)
S-LOC 14	2080/24 777 (800-½)	2080/40 777 (800-¾)	2080-1¾	777 (800-1¾)
CIRCLING	2080-1 745 (800-1)	2080-1¼ 745 (800-1¼)	2080-2½ 745 (800-2½)	2340-3 1005 (1100-3)