

LOC/DME I-MFR <b>110.3</b> Chan 40	APP CRS <b>323°</b>	Rwy Ldg TDZE Apt Elev <b>N/A</b> <b>1335</b>
--	------------------------	---

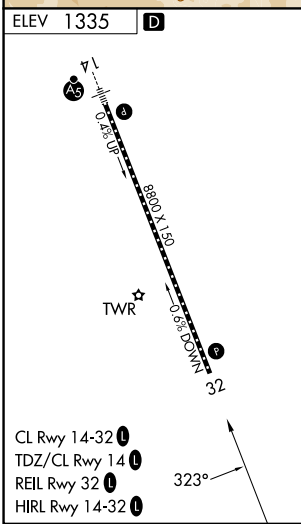
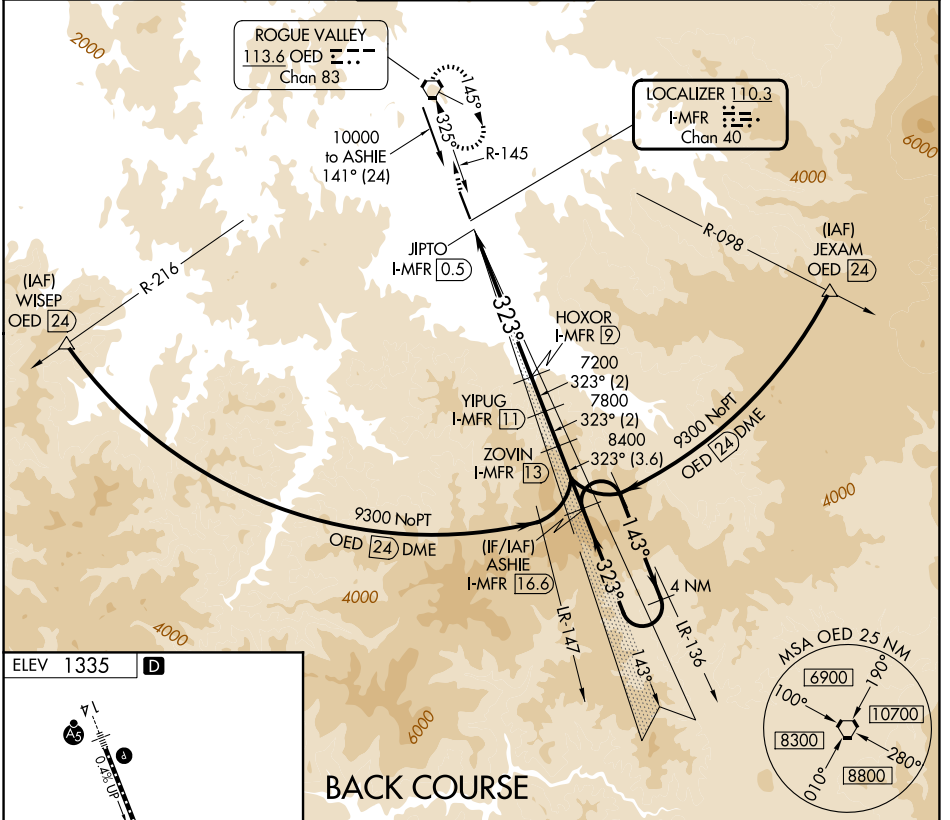
# LOC/DME BC-B

ROGUE VALLEY INTL/MEDFORD (MFR)

**⚠** Visibility reduction by helicopters NA. Circling NA for Cats C and D northeast of Rwy 14-32.

**⚠** MISSED APPROACH: Climb to 7600 direct OED VORTAC and hold, continue climb-in-hold to 7600.

ATIS <b>127.25</b>	CASCADE APP CON * <b>124.3 379.9</b>	MEDFORD TOWER * <b>119.4 (CTAF) 0 257.8</b>	GND CON <b>121.8</b>	UNICOM <b>122.95</b>
-----------------------	---	--	-------------------------	-------------------------



7600 OED	VSGI and descent angles not coincident (VSGI Angle 3.00/TCH 50).		ASHIE I-MFR 16.6	4 NM
↑	Disregard GS indications.		ZOVIN I-MFR 13	Holding Pattern
	JIPTO I-MFR 0.5	HOXOR I-MFR 9	YIPUG I-MFR 11	9300
	7200	7800	8400	143° → ← 323°
	0.7	8.5 NM	2 NM	2 NM
CATEGORY	A	B	C	D
CIRCLING	3540-1¼ 2205 (2300-1¼)	3540-1½ 2205 (2300-1½)	3540-3	2205 (2300-3)

NW-1, 14 MAY 2026 to 11 JUN 2026

NW-1, 14 MAY 2026 to 11 JUN 2026