

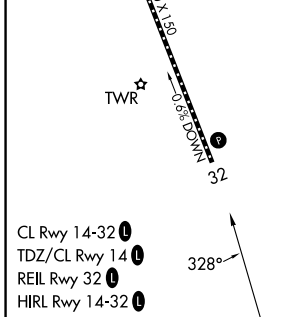
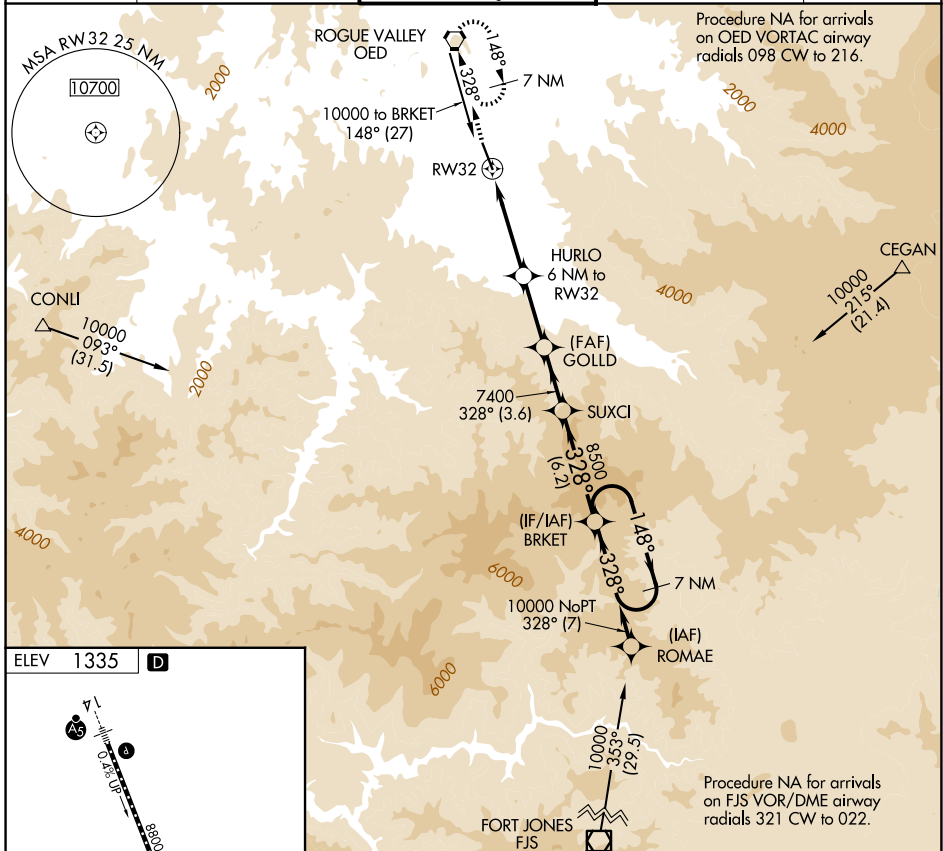
APP CRS 328°	Rwy Ldg TDZE Apt Elev	N/A N/A 1335
------------------------	-----------------------------	---

RNAV (GPS)-D

ROGUE VALLEY INTL/MEDFORD (MFR)

RNP APCH. ▼ ▲ -2°C	Circling NA for Cats C and D northeast of Rwy 14-32.	MISSED APPROACH: Climb to 7800 direct OED VORTAC and hold, continue climb-in-hold to 7800.
-----------------------------	--	--

ATIS 127.25	CASCADE APP CON * 124.3 379.9	MEDFORD TOWER * 119.4 (CTAF) 257.8	GND CON 121.8	UNICOM 122.95
-----------------------	---	--	-------------------------	-------------------------



7800	OED	VGSI and descent angles not coincident (VGSI Angle 3.00/TCH 50).	7 NM Holding Pattern
HURLO 6 NM to RW32	GOLDD	SUXCI	BRKET
RW32	7400	8500	10000
≤ 6.90° TCH 55	328°	148°	328°
6 NM	4 NM	3.6 NM	6.2 NM

CATEGORY	A	B	C	D
CIRCLING	3600-1¼ 2265 (2300-1¼)	3600-1½ 2265 (2300-1½)	3600-3	2265 (2300-3)

NW-1, 14 MAY 2026 to 11 JUN 2026

NW-1, 14 MAY 2026 to 11 JUN 2026