

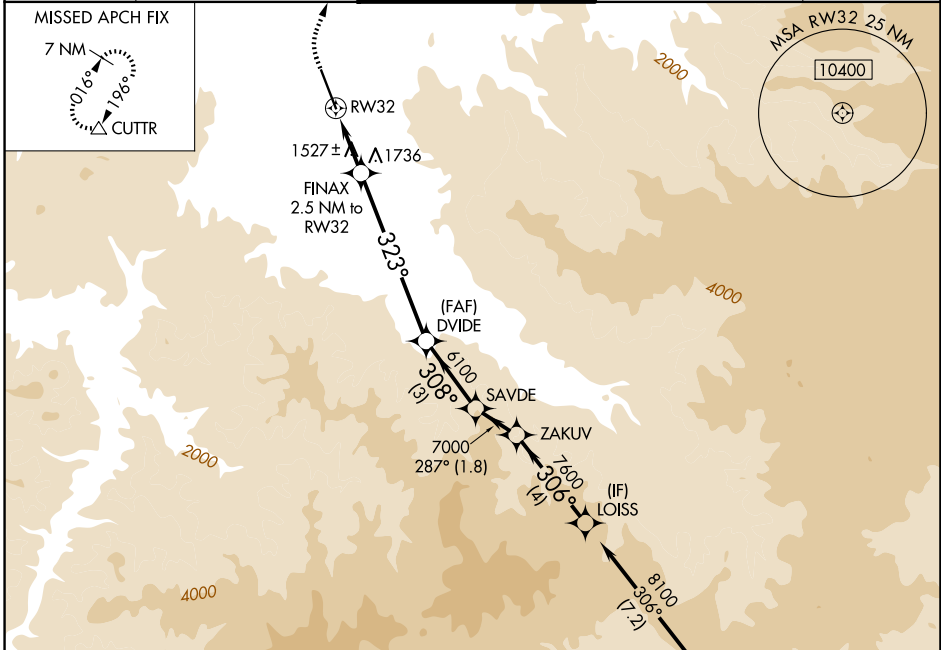
WAAS CH 56544 W32A	APP CRS 323°	Rwy Ldg TDZE 1335 Apt Elev 1335
--	------------------------	---

RNAV (GPS) Y RWY 32

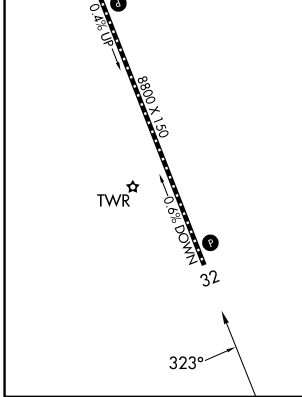
ROGUE VALLEY INTL/MEDFORD (MFR)

RNP APCH - GPS.		MISSED APPROACH: Climb to 1900 then climbing right turn to 10500 direct CUTTR and hold, continue climb-in-hold to 10500.	
Baro-VNAV NA.			

ATIS 127.25	CASCADE APP CON * 124.3 379.9	MEDFORD TOWER * 119.4 (CTAF) 257.8	GND CON 121.8	UNICOM 122.95
-----------------------	---	--	-------------------------	-------------------------



ELEV 1335	D TDZE 1335
CL Rwy 14-32	TDZ/CL Rwy 14
REIL Rwy 32	HIRL Rwy 14-32



1900	10500	CUTTR	VGSI and RNAV glidepath not coincident (VGSI Angle 3.00°/TCH 50).		LOISS
			DVIDE	SAVDE	ZAKUV
			6100	7000	8100
			308°	287°	306°
			323°	7000	7600
			2700	6100	GP 4.95°
					TCH 50

CATEGORY	A	B	C	D
LPV DA	1610-7/8 275 (300-7/8)		NA	
LNAV/VNAV DA	1768-1 1/4 433 (500-1 1/4)		NA	
LNAV MDA	1780-1 445 (500-1)		NA	
CIRCLING	2000-1 665 (700-1)		NA	

NW-1, 14 MAY 2026 to 11 JUN 2026

NW-1, 14 MAY 2026 to 11 JUN 2026