

(MLB8.MLB) 25219

AL-252 (FAA)

MELBOURNE ORLANDO INTL (MLB)  
MELBOURNE, FLORIDA

# MELBOURNE EIGHT DEPARTURE

ORLANDO DEP CON  
126.025 281.425  
ATIS  
132.55  
CLNC DEL  
121.9  
CLNC DEL  
126.025 (When twr closed)  
CTAF  
118.2

RADAR required.

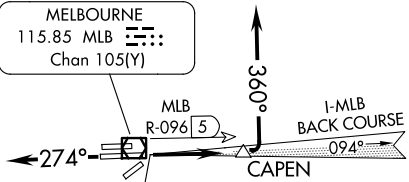
**TOP ALTITUDE:  
2000**

ORLANDO  
112.2 ORL : : : :  
Chan 59

ORMOND BEACH  
112.6 OMN : : : :  
Chan 73

LAKELAND  
116.0 LAL : : : :  
Chan 107

MELBOURNE  
115.85 MLB : : : :  
Chan 105(Y)



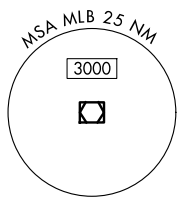
LOCALIZER 108.3  
I-MLB : : : :  
Chan 105(Y)

ST PETERSBURG  
116.4 PIE : : : :  
Chan 111

FREEPORT  
113.2 ZFP : : : :  
Chan 79

**TAKEOFF MINIMUMS**  
Rwys 5, 9L, 23, 27R: NA - ATC.  
Rwys 9R, 27L: Standard.

PALM BEACH  
115.7 PBI : : : :  
Chan 104



FORT LAUDERDALE  
114.4 FLL : : : :  
Chan 91

NOTE: Chart not to scale.

## DEPARTURE ROUTE DESCRIPTION

TAKEOFF RUNWAY 9R: Climb on MLB VOR/DME R-096 to CAPEN/MLB VOR/DME 5.3 DME, then turn left heading 360°, thence. . . .

TAKEOFF RUNWAY 27L: Climb on heading 274°, thence. . . .

. . . .all aircraft expect RADAR vectors to join assigned route, maintain 2000.  
Expect clearance to filed altitude/flight level 10 minutes after departure.

# MELBOURNE EIGHT DEPARTURE

(MLB8.MLB) 12JUN25

MELBOURNE, FLORIDA  
MELBOURNE ORLANDO INTL (MLB)

SE-3, 14 MAY 2026 to 11 JUN 2026

SE-3, 14 MAY 2026 to 11 JUN 2026