

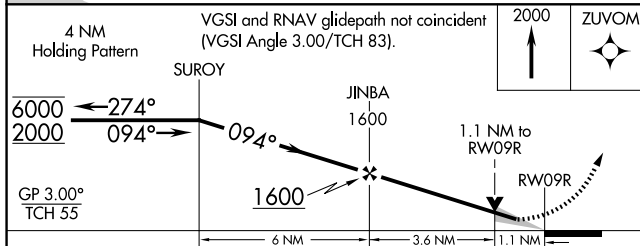
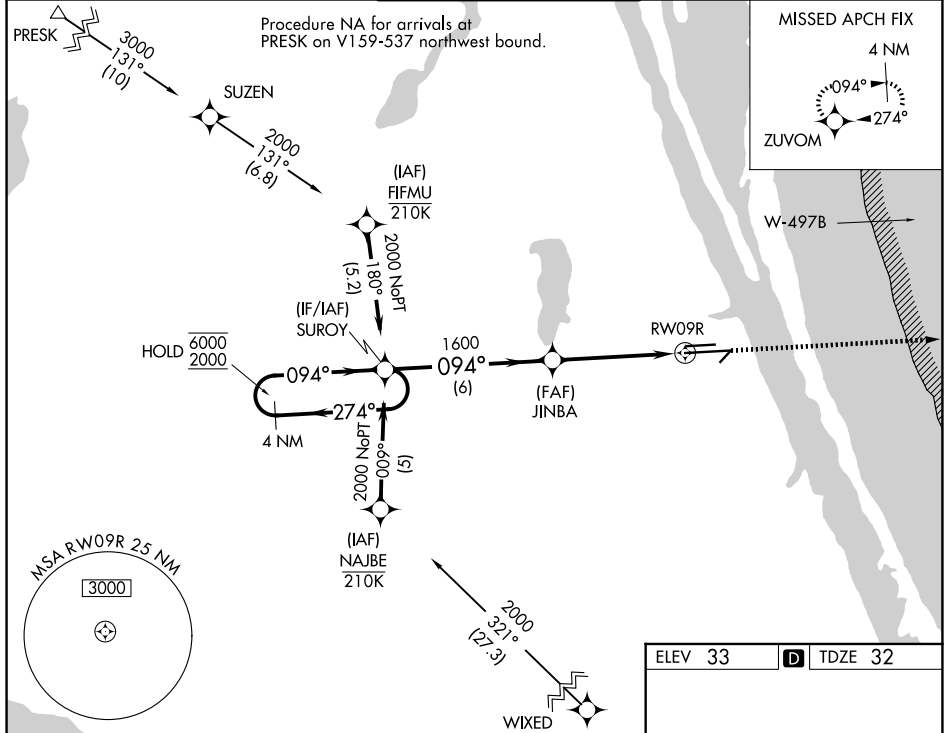
WAAS CH 60901 W09B	APP CRS 094°	Rwy Ldg 10181 TDZE 32 Apt Elev 33
--	------------------------	--

RNAV (GPS) RWY 9R

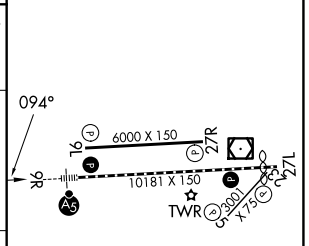
MELBOURNE ORLANDO INTL (MLB)

RNP APCH - GPS.	MALSR 	MISSED APPROACH: Climb to 2000 direct ZUVOM and hold.
 For uncompensated Baro-VNAV systems, LNAV/VNAV NA below 2°C or above 54°C.		

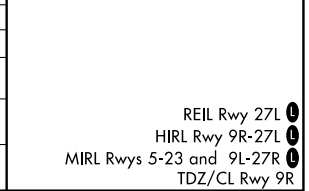
ATIS 132.55	ORLANDO APP CON 126.025 281.425	MELBOURNE TOWER ★ 118.2 (CTAF) 257.8	GND CON 121.9	UNICOM 122.95
-----------------------	---	--	-------------------------	-------------------------



ELEV 33	TDZE 32
---------	---------



CATEGORY	A	B	C	D
LPV DA	232/18		200 (200-½)	
LNAV/VNAV DA	427/35		395 (400-⅝)	
LNAV MDA	480/24 448 (500-½)		480/45 448 (500-⅞)	
CIRCLING	500-1 467 (500-1)	560-1 527 (600-1)	680-1¾ 647 (700-1¾)	880-2¾ 847 (900-2¾)



SE-3, 14 MAY 2026 to 11 JUN 2026

SE-3, 14 MAY 2026 to 11 JUN 2026