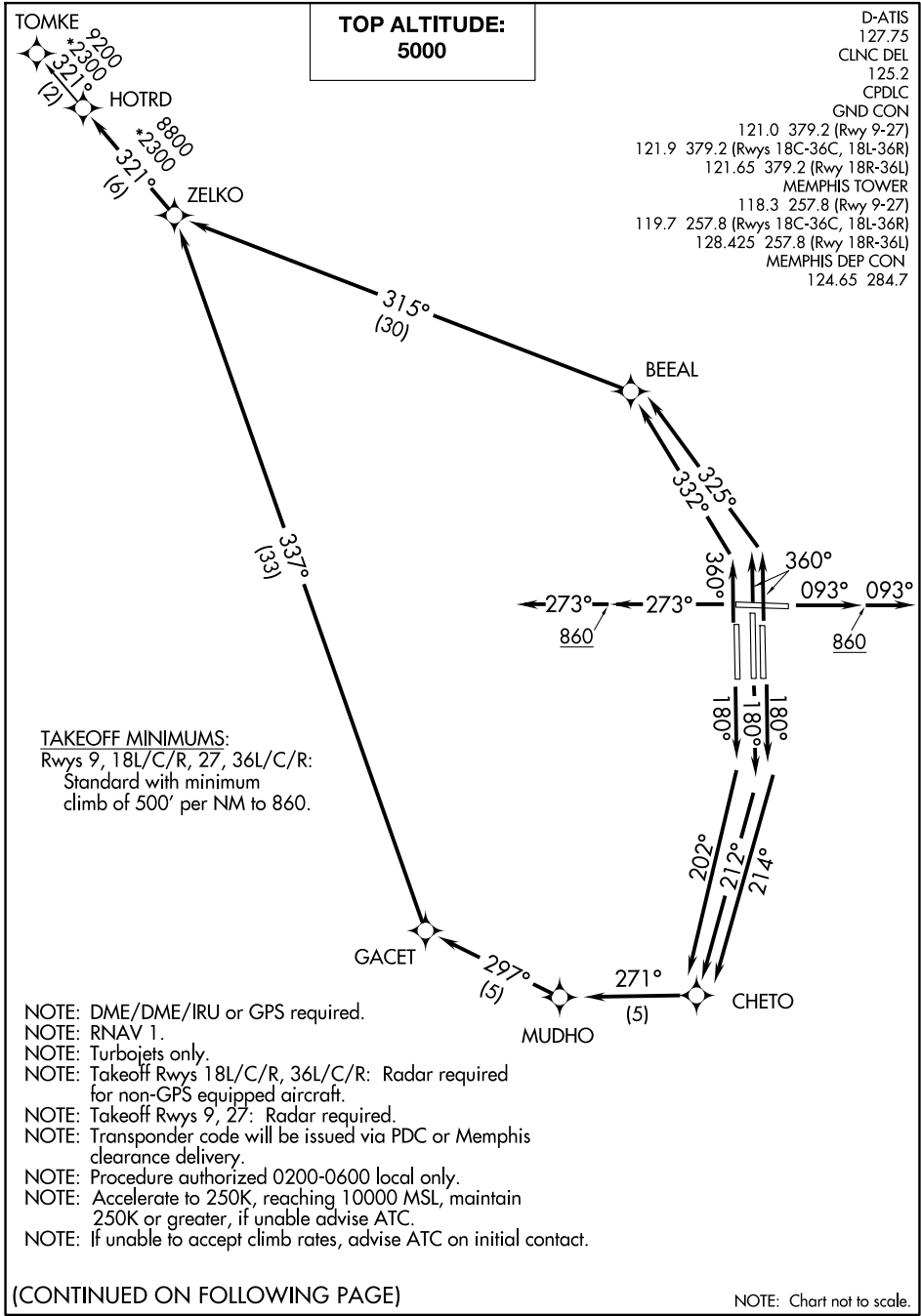


HOTRD FIVE DEPARTURE (RNAV)

MEMPHIS, TENNESSEE



SE-1, 14 MAY 2026 to 11 JUN 2026

SE-1, 14 MAY 2026 to 11 JUN 2026

(CONTINUED ON FOLLOWING PAGE)

NOTE: Chart not to scale.

HOTRD FIVE DEPARTURE (RNAV)

MEMPHIS, TENNESSEE

HOTRD FIVE DEPARTURE (RNAV)



DEPARTURE ROUTE DESCRIPTION

TAKEOFF RUNWAY 9: Climb on heading 093° to 860, then continue climb on heading 093°, expect vectors to ZELKO, then on depicted route to HOTRD, thence....

TAKEOFF RUNWAY 18C: Climb on heading 180° to intercept course 212° to CHETO, then on depicted route to HOTRD, thence....

TAKEOFF RUNWAY 18L: Climb on heading 180° to intercept course 214° to CHETO, then on depicted route to HOTRD, thence....

TAKEOFF RUNWAY 18R: Climb on heading 180° to intercept course 202° to CHETO, then on depicted route to HOTRD, thence....

TAKEOFF RUNWAY 27: Climb on heading 273° to 860, then continue climb on heading 273°, expect vectors to ZELKO, then on depicted route to HOTRD, thence....

TAKEOFF RUNWAY 36L: Climb on heading 360° to intercept course 332° to BEEAL, then on depicted route to HOTRD, thence....

TAKEOFF RUNWAYS 36C/R: Climb on heading 360° to intercept course 325° to BEEAL, then on depicted route to HOTRD, thence....

....maintain 5000. Expect clearance to filed altitude within ten (10) minutes after departure.

TOMKE TRANSITION (HOTRD5.TOMKE):

SE-1, 14 MAY 2026 to 11 JUN 2026

SE-1, 14 MAY 2026 to 11 JUN 2026