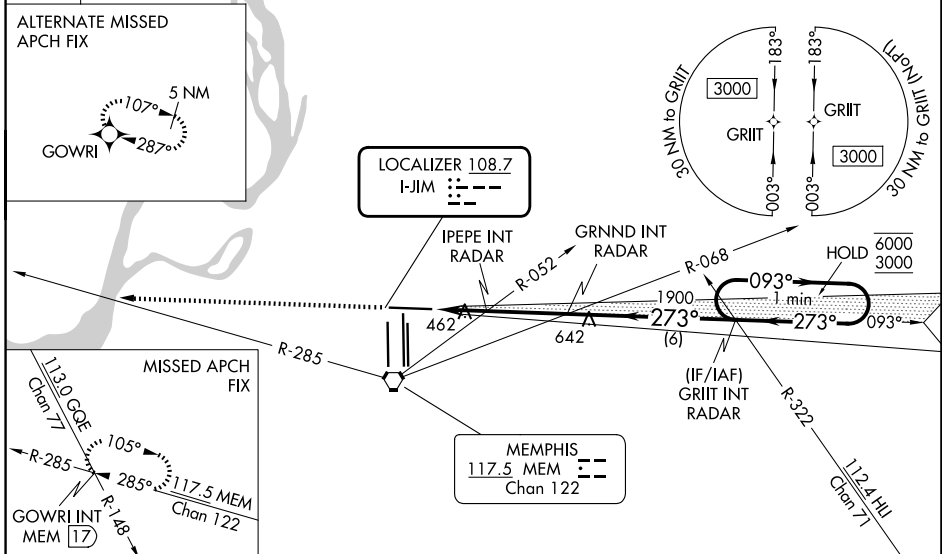


LOC I-JIM 108.7	APP CRS 273°	Rwy Ldg TDZE Apt Elev	8946 292 341
---------------------------	------------------------	-----------------------------	---

ILS or LOC RWY 27
FREDERICK W SMITH INTL/MEMPHIS (MEM)

RNAV 1-GPS or RADAR required for procedure entry.		MALSR	MISSED APPROACH: Climb to 5000 and intercept MEM VORTAC R-285 to GOWRI INT/17 DME and hold, continue climb-in-hold to 5000.
▼ For inop ALS, increase S-ILS Cat E visibility to RVR 4000, and S-LOC Cat E visibility to 2 SM, IPEPE fix minimums S-LOC Cat E visibility to 1/4 SM. ▲ *RVR 1800 authorized with use of FD or AP or HUD to DA.			
MEMPHIS APP CON		MEMPHIS TOWER	GND CON
119.1 291.6 (176°-355°)	(Rwy 9-27)	118.3 257.8	(Rwy 9-27) 121.0 379.2
125.8 338.3 (356°-175°)	(Rwys 18C-36C, 18L-36R)	119.7 257.8	(Rwys 18C-36C, 18L-36R) 121.9 379.2
	(Rwy 18R-36L)	128.425 257.8	(Rwy 18R-36L) 121.65 379.2

D-ATIS 127.75	
-------------------------	--



SE-1, 14 MAY 2026 to 11 JUN 2026

SE-1, 14 MAY 2026 to 11 JUN 2026

ELEV 341	D	TDZE 292	5000	MEM R-285	GOWRI INT	GRNND INT RADAR	GRIIT INT RADAR	One Minute Holding Pattern
				VGSI and ILS glidepath not coincident (VGSI Angle 3.00/TCH 69).				
HIRL all rwys TDZL/RCLS Rwys 18L, 18C, 18R, 36R, 36C, and 36L			FAF to MAP 4.9 NM					
Knots	60	90	120	150	180			
Min:Sec	4:54	3:16	2:27	1:58	1:38			
CATEGORY	A	B	C	D	E			
S-ILS 27 *	492/24 200 (200-1/2)							
S-LOC 27	980/24	688 (700-1/2)	980-1 1/2		688 (700-1 1/2)			
CIRCLING	980-1	639 (700-1)	980-2	1020-2 1/4	1140-2 3/4	639 (700-2) 679 (700-2 1/4) 799 (800-2 3/4)		
IPEPE FIX MINIMUMS (DUAL VOR RECEIVERS OR RADAR REQUIRED)								
S-LOC 27	720/24	428 (400-1/2)	720/40		428 (400-3/4)			
CIRCLING	940-1	599 (600-1)	940-1 1/2	1020-2 1/4	1140-2 3/4	599 (600-1 1/2) 679 (700-2 1/4) 799 (800-2 3/4)		