

LOC/DME I-TSE <b>110.5</b> Chan <b>42</b>	APP CRS <b>360°</b>	Rwy Ldg <b>10715</b> TDZE <b>341</b> Apt Elev <b>341</b>
---	------------------------	--

# ILS or LOC RWY 36C

FREDERICK W SMITH INTL/MEMPHIS (MEM)

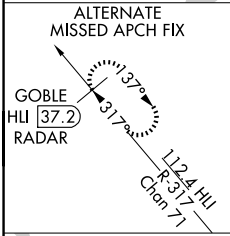
**▼** For inoperative ALS, increase S-ILS 36C Cat E visibility to RVR 4000 and S-LOC 36C Cat C/D/E visibility to RVR 6000. DME or RADAR required. Simultaneous approach authorized with Rwy 36L.

ALS-F-2

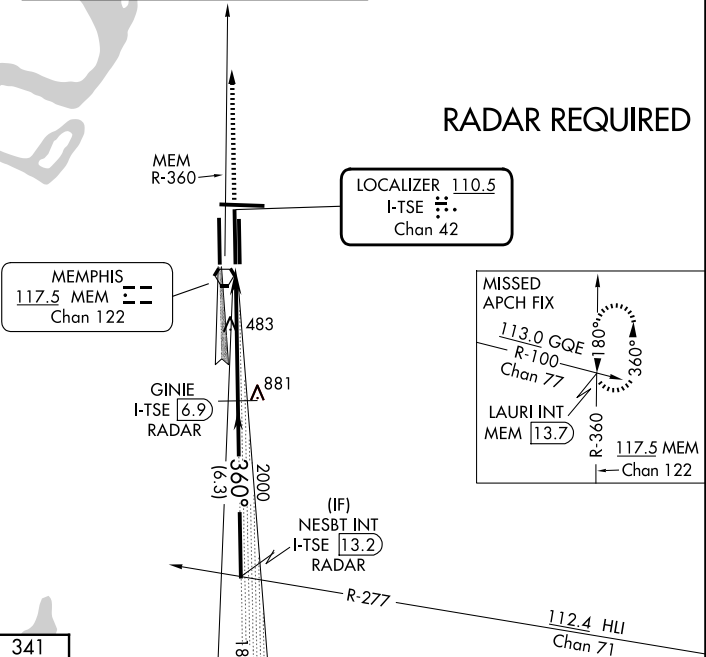
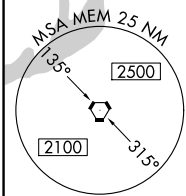
MISSED APPROACH: Climb to 3000 via MEM VORTAC R-360 to LAURI INT/MEM 13.7 DME and hold.

MEMPHIS APP CON <b>119.1 291.6</b> (176°-355°) <b>125.8 338.3</b> (356°-175°)	MEMPHIS TOWER (Rwy 9-27) <b>118.3 257.8</b> (Rwys 18C-36C, 18L-36R) <b>119.7 257.8</b> (Rwy 18R-36L) <b>128.425 257.8</b>	GND CON (Rwy 9-27) <b>121.0 379.2</b> (Rwys 18C-36C, 18L-36R) <b>121.9 379.2</b> (Rwy 18R-36L) <b>121.65 379.2</b>
---	--	---

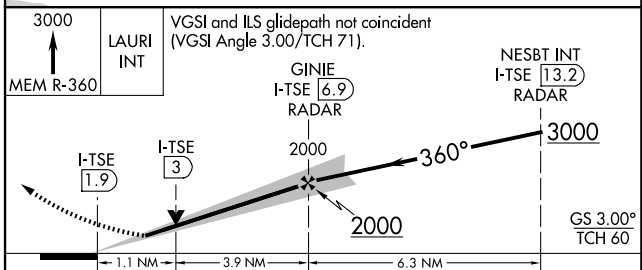
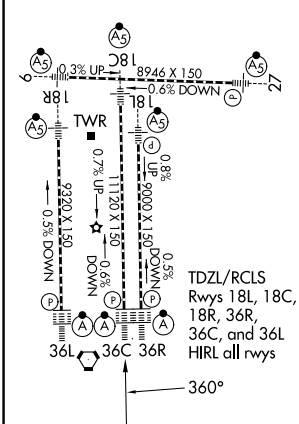
D-ATIS  
**127.75**



## RADAR REQUIRED



ELEV <b>341</b>	<b>D</b>	TDZE <b>341</b>
-----------------	----------	-----------------



CATEGORY	A	B	C	D	E
S-ILS 36C	541/18 200 (200-½)				541/24 200 (200-½)
S-LOC 36C	760/24	419 (500-½)	760/40	419 (500-¾)	760/50 419(500-1)
CIRCLING	940-1	599 (600-1)	940-1½ 599 (600-1½)	1020-2¼ 679 (700-2¼)	1140-2¾ 799 (800-2¾)

FAF to MAP 5 NM

Knots	60	90	120	150	180
Min:Sec	5:00	3:20	2:30	2:00	1:40

SE-1, 14 MAY 2026 to 11 JUN 2026

SE-1, 14 MAY 2026 to 11 JUN 2026