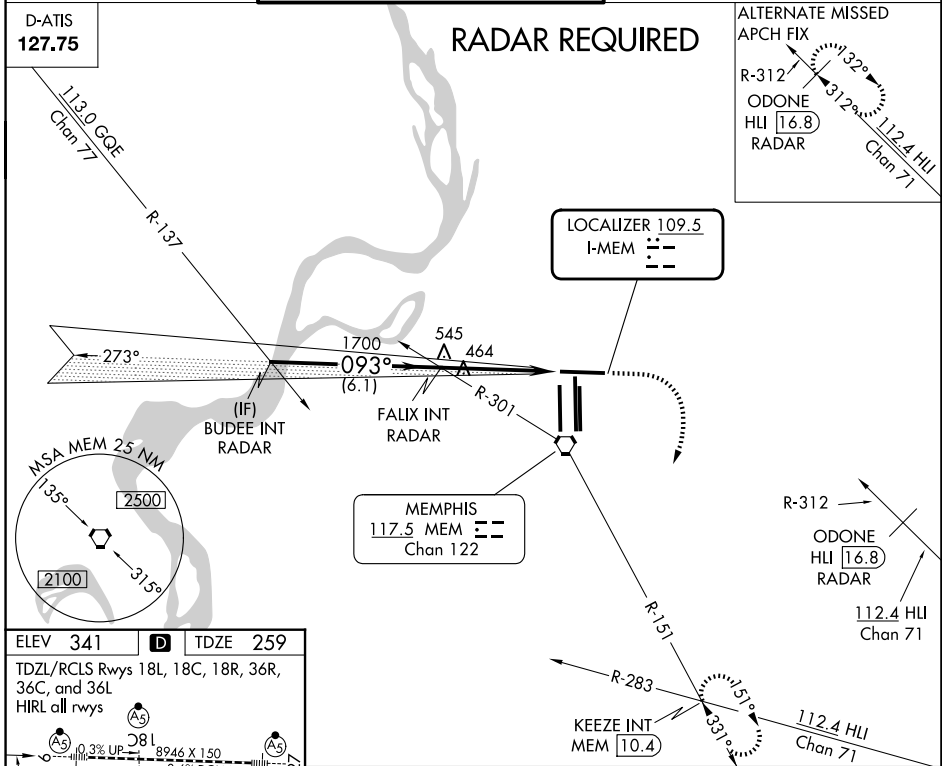


LOC I-MEM 109.5	APP CRS 093°	Rwy Ldg TDZE Apt Elev	8946 259 341
---------------------------	------------------------	-----------------------------	---

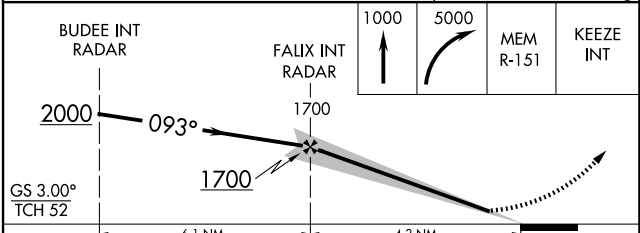
ILS or LOC RWY 9
FREDERICK W SMITH INTL/MEMPHIS (MEM)

<p>▼ For inop ALS, increase S-ILS 9 Cat E visibility to RVR 4000 and S-LOC 9 Cat E visibility to 1¾ SM.</p>	<p>MALSR</p>	<p>MISSED APPROACH: Climb to 1000 then climbing right turn to 5000 on MEM R-151 to KEEZE INT/MEM 10.4 DME and hold, continue climb-in-hold to 5000.</p>
---	--------------	---

MEMPHIS APP CON	MEMPHIS TOWER	GND CON
119.1 291.6 (176°-355°)	(Rwy 9-27) 118.3 257.8	(Rwy 9-27) 121.0 379.2
125.8 338.3 (356°-175°)	(Rwys 18C-36C, 18L-36R) 119.7 257.8	(Rwys 18C-36C, 18L-36R) 121.9 379.2
	(Rwy 18R-36L) 128.425 257.8	(Rwy 18R-36L) 121.65 379.2



ELEV 341	D	TDZE 259			
TDZL/RCLS Rwys 18L, 18C, 18R, 36R, 36C, and 36L					
HIRL all rwys					
<p>0.3% UP</p> <p>0.6% DOWN</p> <p>0.8%</p> <p>0.7% UP</p> <p>0.6% DOWN</p> <p>0.5%</p> <p>0.3% DOWN</p>					
<p>8946 X 1.50</p> <p>2900 X 1.50</p> <p>1170 X 1.50</p> <p>2900 X 1.50</p> <p>1170 X 1.50</p>					
<p>36L 36C 36R</p>					
FAF to MAP 4.3 NM					
Knots	60	90	120	150	180
Min:Sec	4:18	2:52	2:09	1:43	1:26



CATEGORY	A	B	C	D	E
S-ILS 9	466/24 207 (200-½)				
S-LOC 9	720/24	461 (400-½)	720/50	461 (400-1)	720/60 461 (400-1¼)
CIRCLING	940-1	599 (600-1)	940-1½ 599 (600-1½)	1020-2¼ 679 (700-2¼)	1140-2¾ 799 (800-2¾)

SE-1, 14 MAY 2026 to 11 JUN 2026

SE-1, 14 MAY 2026 to 11 JUN 2026