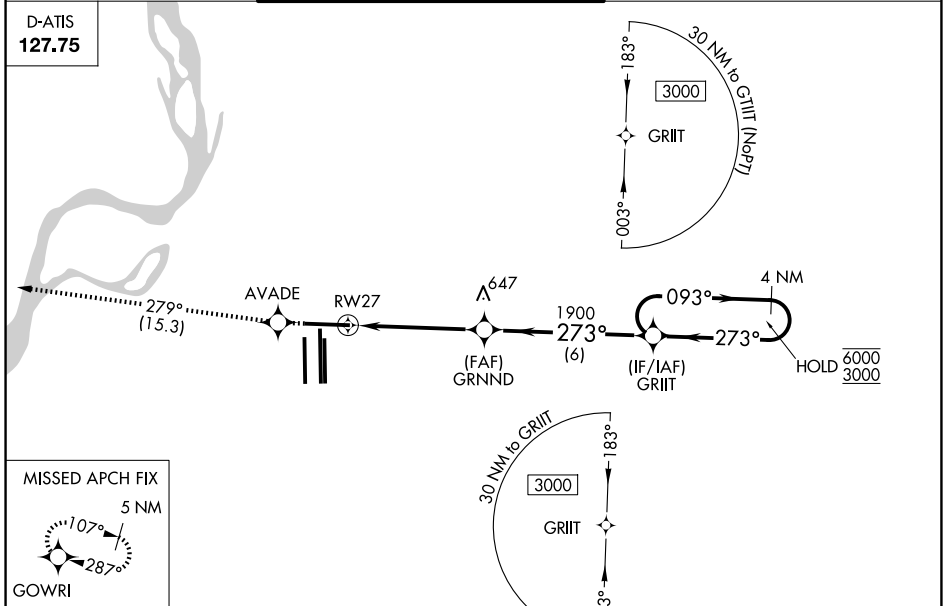


WAAS CH 93607 W27A	APP CRS 273°	Rwy Ldg TDZE Apt Elev	8946 292 341
--	------------------------	-----------------------------	---

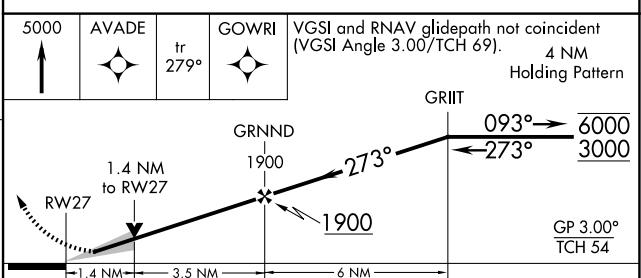
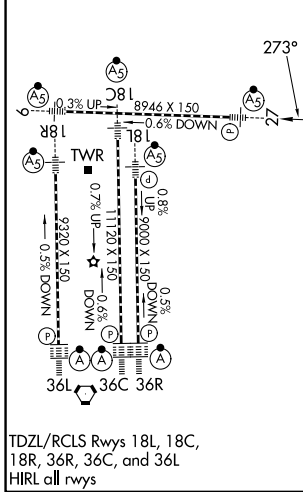
RNAV (GPS) RWY 27

FREDERICK W SMITH INTL/MEMPHIS (MEM)

RNP APCH - GPS.	MALSR	MISSED APPROACH: Climb to 5000 direct AVADE and on track 279° to GOWRI and hold, continue climb-in-hold to 5000.
<p>⚠ For uncompensated Baro-VNAV systems, LNAV/VNAV NA below -9°C or above 54°C. For inop ALS, increase LNAV Cat C and D visibility to 1 3/8 SM. *RVR 1800 authorized with use of FD or AP or HUD to DA.</p>		
MEMPHIS APP CON	MEMPHIS TOWER	GND CON
119.1 291.6 (176°-355°)	(Rwy 9-27) 118.3 257.8	(Rwy 9-27) 121.0 379.2
125.8 338.3 (356°-175°)	(Rwys 18C-36C, 18L-36R) 119.7 257.8	(Rwys 18C-36C, 18L-36R) 121.9 379.2
	(Rwy 18R-36L) 128.425 257.8	(Rwy 18R-36L) 121.65 379.2



ELEV 341	D	TDZE 292
----------	----------	----------



CATEGORY	A	B	C	D
LPV DA *	492/24		200 (200-1/2)	
LNAV/VNAV DA	745/50		453 (500-1)	
LNAV MDA	800/24	508 (500-1/2)	800/55	508 (500-1)
CIRCLING	940-1	599 (600-1)	940-1 1/2 599 (600-1 1/2)	1020-2 1/4 679 (700-2 1/4)

SE-1, 14 MAY 2026 to 11 JUN 2026

SE-1, 14 MAY 2026 to 11 JUN 2026