

WAAS CH <b>65907</b> <b>W36A</b>	APP CRS <b>360°</b>	Rwy Ldg TDZE Apt Elev	<b>9320</b> <b>321</b> <b>341</b>
--	------------------------	-----------------------------	---

# RNAV (GPS) RWY 36L

FREDERICK W SMITH INTL/MEMPHIS(MEM)

**⚠** For uncompensated Baro-VNAV systems, LNAV/VNAV NA below -15°C (5°F) or above 48°C (118°F). Simultaneous approach authorized. DME/DME RNP-0.3 NA. LNAV procedure NA during simultaneous operations. Use of FD or AP required during simultaneous operations.



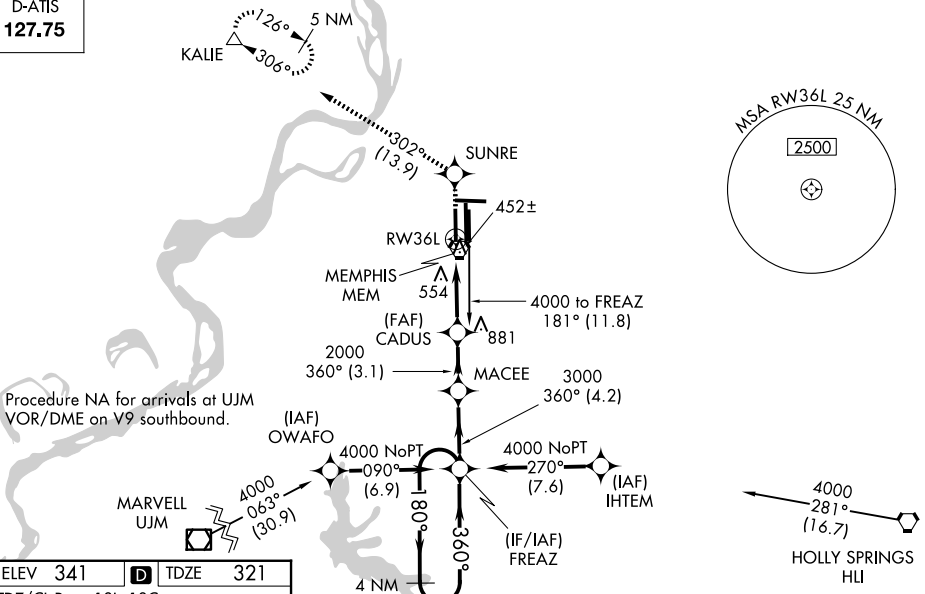
**MISSED APPROACH:** Climb to 5000 direct SUNRE and on track 302° to KALIE and hold, continue climb-in-hold to 5000.

MEMPHIS APP CON  
**119.1 291.6** (176°-355°)  
**125.8 338.3** (356°-175°)

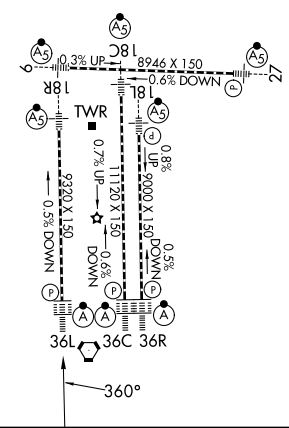
MEMPHIS TOWER	
(Rwy 9-27)	<b>118.3 257.8</b>
(Rwys 18C-36C, 18L-36R)	<b>119.7 257.8</b>
(Rwy 18R-36L)	<b>128.425 257.8</b>

GND CON	
(Rwy 9-27)	<b>121.0 379.2</b>
(Rwys 18C-36C, 18L-36R)	<b>121.9 379.2</b>
(Rwy 18R-36L)	<b>121.65 379.2</b>

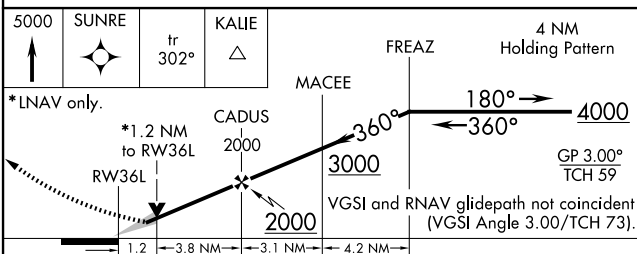
D-ATIS  
**127.75**



ELEV 341	<b>D</b>	TDZE 321
TDZ/CL Rwys 18L, 18C, 18R, 36R, 36C, and 36L HIRL all rwys		



Procedure NA for arrival on HLI VORTAC airway radials 222 CW 303.



CATEGORY	A	B	C	D
LPV DA	673/40 352 (400-3/4)			
LNAV/VNAV DA	760/50 439 (500-1)			
LNAV MDA	780/24	459 (500-1/2)	780/40 459 (500-3/4)	780/50 459 (500-1)
CIRCLING	940-1	599 (600-1)	940-1 1/2 599 (600-1 1/2)	1020-2 1/4 679 (700-2 1/4)

SE-1, 14 MAY 2026 to 11 JUN 2026

SE-1, 14 MAY 2026 to 11 JUN 2026