

WAAS CH <b>49107</b> <b>W36D</b>	APP CRS <b>360°</b>	Rwy Ldg TDZE Apt Elev	<b>9000</b> <b>335</b> <b>341</b>
--	------------------------	-----------------------------	---

# RNAV (GPS) RWY 36R

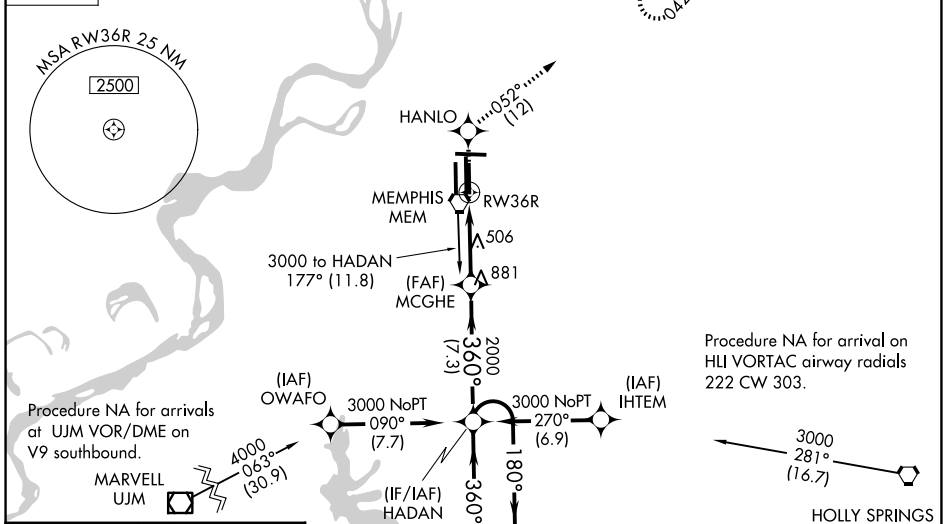
FREDERICK W SMITH INTL/MEMPHIS (MEM)

**⚠** For uncompensated Baro-VNAV systems, LNAV/VNAV NA below -1.5°C (5°F) or above 48°C (118°F). Simultaneous approach authorized. DME/DME RNP-0.3 NA. LNAV procedure NA during simultaneous operations. Use of FD or AP required during simultaneous operations.

**ALSF-2**  
**MISSED APPROACH:** Climb to 5000 direct HANLO and on 052° track to OROCU and hold, continue climb-in-hold to 5000.

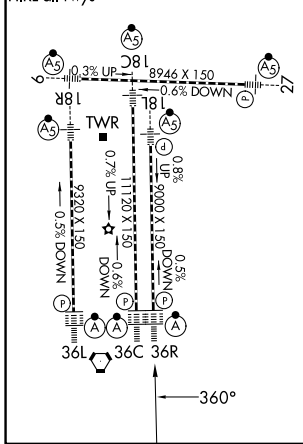
MEMPHIS APP CON	MEMPHIS TOWER	GND CON
<b>119.1 291.6</b> (176°-355°)	(Rwy 9-27) <b>118.3 257.8</b>	(Rwy 9-27) <b>121.0 379.2</b>
<b>125.8 338.3</b> (356°-175°)	(Rwys 18C-36C, 18L-36R) <b>119.7 257.8</b>	(Rwys 18C-36C, 18L-36R) <b>121.9 379.2</b>
	(Rwy 18R-36L) <b>128.425 257.8</b>	(Rwy 18R-36L) <b>121.65 379.2</b>

D-ATIS  
**127.75**

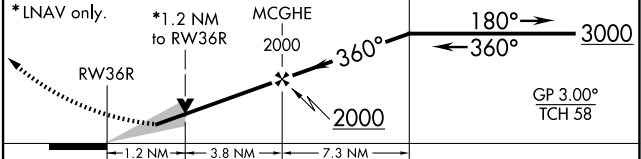


ELEV 341	<b>D</b>	TDZE 335
----------	----------	----------

TDZL/RCLS Rwys 18L, 18C, 18R, 36R, 36C, and 36L  
HIRL all rwys



5000	HANLO	tr 052°	OROCU	VGSI and RNAV glidepath not coincident (VGSI Angle 3.00/TCH 69).	4 NM
				HADAN	Holding Pattern



CATEGORY	A	B	C	D
LPV DA		639/24	304 (300-1/2)	
LNAV/VNAV DA		763/50	428 (500-1)	
LNAV MDA	760/24	425 (500-1/2)	760/40 425 (500-3/4)	760/50 425 (500-1)
CIRCLING	940-1	599 (600-1)	940-1 1/2 599 (600-1 1/2)	1020-2 1/4 679 (700-2 1/4)

SE-1, 14 MAY 2026 to 11 JUN 2026

SE-1, 14 MAY 2026 to 11 JUN 2026