

| | | |
|-------------|----------|-------------|
| APP CRS | Rwy Ldg | 9320 |
| 180° | TDZE | 295 |
| | Apt Elev | 341 |

RNAV (RNP) X RWY 18R

FREDERICK W SMITH INTL/MEMPHIS (MEM)

▼ For uncompensated Baro-VNAV systems, procedure NA below -9°C (16°F) or above 48°C (118°F). Simultaneous approach authorized. GPS required. Missed approach requires RNP less than 1.0. Use of FD or AP required during simultaneous operations.

MALSR



MISSED APPROACH: Climb to 5000 on track 180° to ZUPIN and on track 180° to HARUB and on track 180° to JAGUR and on track 223° to JEPOB and hold.

MEMPHIS APP CON

| | | |
|--------------|--------------|-------------|
| 119.1 | 291.6 | (176°-355°) |
| 125.8 | 338.3 | (356°-175°) |

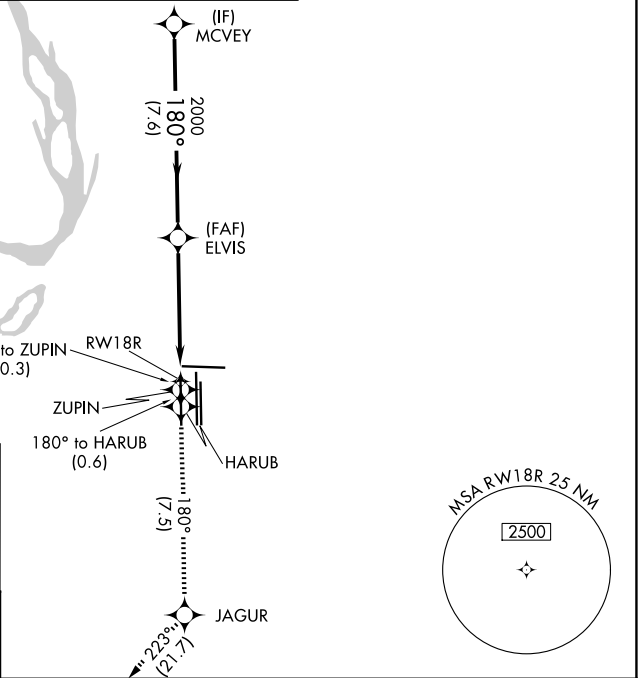
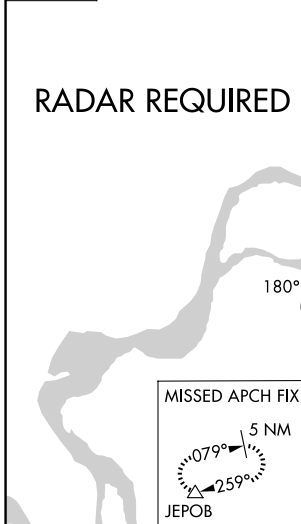
MEMPHIS TOWER

| | | |
|-------------------------|----------------|--------------|
| (Rwy 9-27) | 118.3 | 257.8 |
| (Rwys 18C-36C, 18L-36R) | 119.7 | 257.8 |
| (Rwy 18R-36L) | 128.425 | 257.8 |

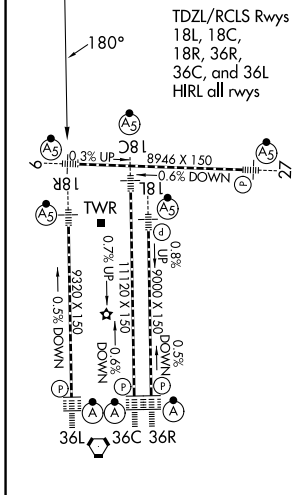
GND CON

| | | |
|-------------------------|---------------|--------------|
| (Rwy 9-27) | 121.0 | 379.2 |
| (Rwys 18C-36C, 18L-36R) | 121.9 | 379.2 |
| (Rwy 18R-36L) | 121.65 | 379.2 |

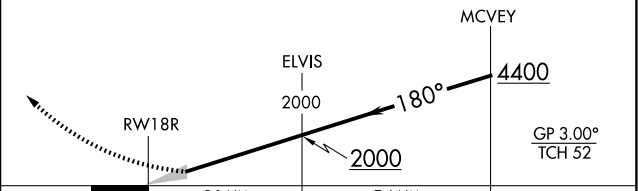
D-ATIS
127.75



| | | | |
|------|------------|------|------------|
| ELEV | 341 | TDZE | 295 |
|------|------------|------|------------|



| | | | | |
|------|---------|---------|---------|---------|
| 5000 | ZUPIN | HARUB | JAGUR | JEPOB |
| ↑ | tr 180° | tr 180° | tr 180° | tr 223° |



| | | | | |
|-------------|--------|---|---------------|---|
| CATEGORY | A | B | C | D |
| RNP 0.14 DA | 737/45 | | 442 (400-7/8) | |

AUTHORIZATION REQUIRED

SE-1, 14 MAY 2026 to 11 JUN 2026

SE-1, 14 MAY 2026 to 11 JUN 2026