


RNAV (RNP) Y RWY 18C

FREDERICK W SMITH INTL/MEMPHIS (MEM)

APP CRS	Rwy Ldg	11120
180°	TDZE	290
	Appt Elev	341

▼ For uncompensated Baro-VNAV systems, procedure NA below -10°C (14°F) or above 54°C (130°F). GPS required. For inop ALS, increase RNP 0.30* all Cats visibility to 1½ SM and RNP 0.30 all Cats visibility to 1½ SM. Simultaneous approach authorized. Use of FD or AP required during simultaneous operations.

MALSR



MISSED APPROACH: Climb to 5000 on track 180° to CEDEN on track 137° to KEEZE and hold, continue climb-in-hold to 5000. *Missed approach requires a minimum climb of 400 feet per NM to 1000.

MEMPHIS APP CON

119.1 291.6	(176°-355°)
125.8 338.3	(356°-175°)

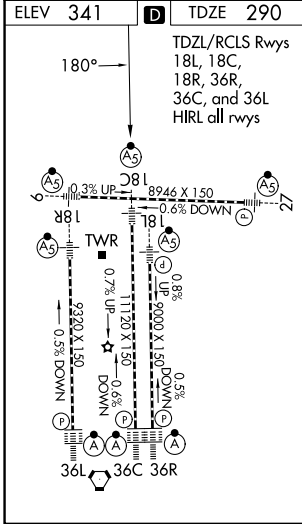
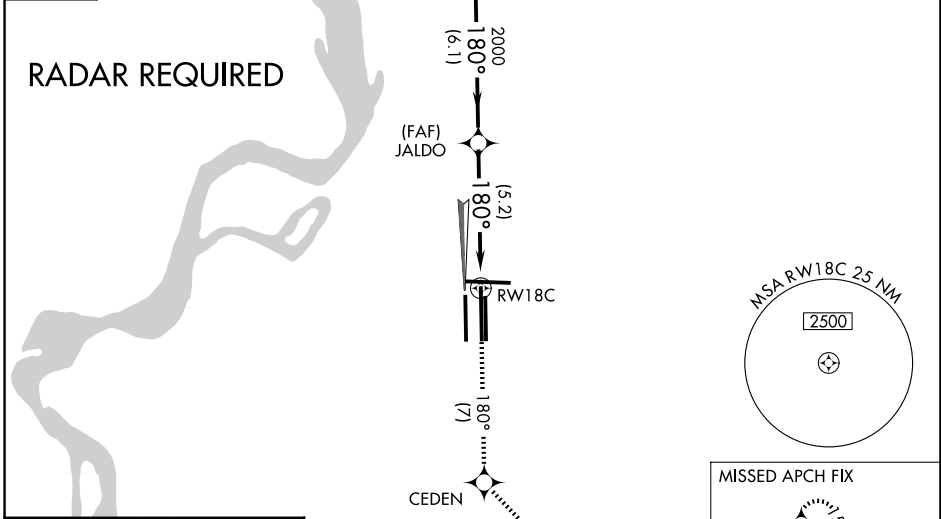
MEMPHIS TOWER

(Rwy 9-27)	118.3 257.8
(Rwys 18C-36C, 18L-36R)	119.7 257.8
(Rwy 18R-36L)	128.425 257.8

GND CON

(Rwy 9-27)	121.0 379.2
(Rwys 18C-36C, 18L-36R)	121.9 379.2
(Rwy 18R-36L)	121.65 379.2

D-ATIS
127.75



ELEV 341	D	TDZE 290	TDZL/RCLS Rwys 18L, 18C, 18R, 36R, 36C, and 36L HIRL all rwys		
5000	↑	tr 180°	CEDEN	tr 137°	KEEZE
RWY 18C		JALDO	2000	3900	Lauri
5.2 NM		6.1 NM		GP 3.00° TCH 54	
CATEGORY	A	B	C	D	
RNP 0.30 DA*	655/35		365 (400-5%)		
RNP 0.30 DA	747/54		457 (500-1)		

AUTHORIZATION REQUIRED

SE-1, 14 MAY 2026 to 11 JUN 2026

SE-1, 14 MAY 2026 to 11 JUN 2026