


# RNAV (RNP) Y RWY 18L

FREDERICK W SMITH INTL/MEMPHIS (MEM)

APP CRS	Rwy Ldg	<b>9000</b>
<b>180°</b>	TDZE	<b>301</b>
	Apt Elev	<b>341</b>

**▼** For uncompensated Baro-VNAV systems, procedure NA below -9°C (16°F) or above 48°C (118 °F). GPS required. Simultaneous approach authorized. For inop ALS, increase RNP 0.30\* all Cats visibility to RVR 6000 and RNP 0.30 all Cats visibility to 1¼ SM.

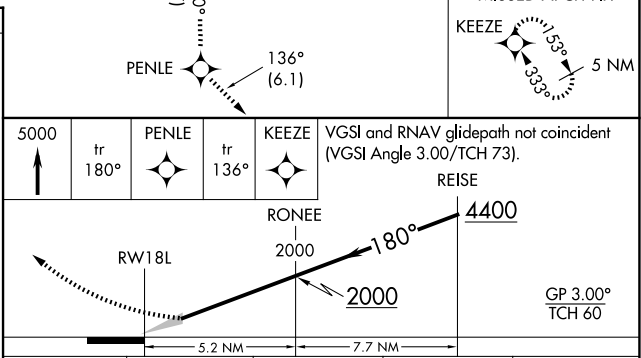
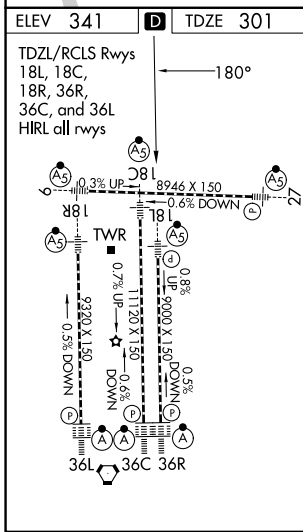
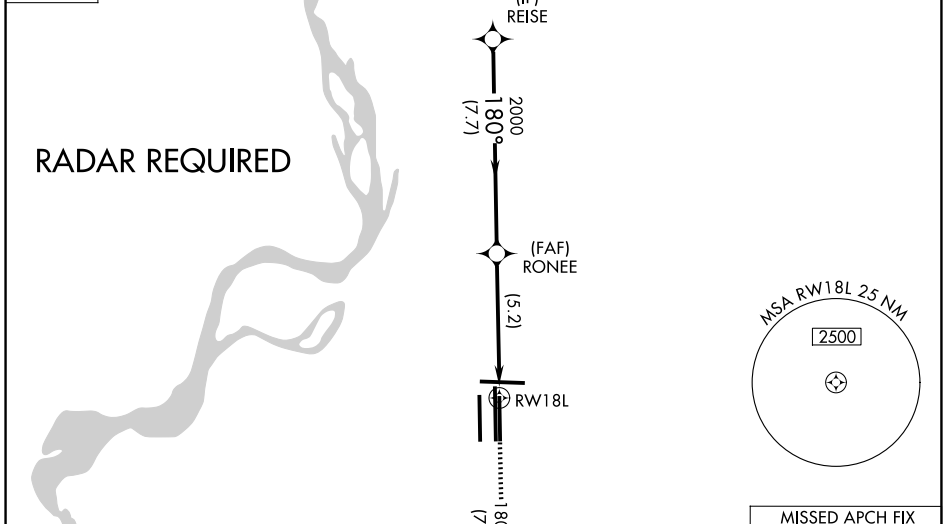
**MALSRL**  
  
**MISSED APPROACH:** Climb to 5000 on track 180° to PENLE and on track 136° to KEEZE and hold, continue climb-in-hold to 5000. \*Missed approach requires minimum climb of 400 feet per NM to 1000.

MEMPHIS APP CON	
<b>119.1 291.6</b>	(176°-355°)
<b>125.8 338.3</b>	(356°-175°)

MEMPHIS TOWER	
(Rwy 9-27)	<b>118.3 257.8</b>
(Rwys 18C-36C, 18L-36R)	<b>119.7 257.8</b>
(Rwy 18R-36L)	<b>128.425 257.8</b>

GND CON	
(Rwy 9-27)	<b>121.0 379.2</b>
(Rwys 18C-36C, 18L-36R)	<b>121.9 379.2</b>
(Rwy 18R-36L)	<b>121.65 379.2</b>

D-ATIS
<b>127.75</b>



CATEGORY	A	B	C	D
RNP 0.30 DA*	698/50 397 (400-1)			
RNP 0.30 DA	791/60 490 (500-1¼)			

**AUTHORIZATION REQUIRED**

SE-1, 14 MAY 2026 to 11 JUN 2026

SE-1, 14 MAY 2026 to 11 JUN 2026