

APP CRS <b>180°</b>	Rwy Ldg TDZE Apt Elev	<b>9320</b> <b>295</b> <b>341</b>
------------------------	-----------------------------	---

# RNAV (RNP) Y RWY 18R

FREDERICK W SMITH INTL/MEMPHIS (MEM)

**▼** For uncompensated Baro-VNAV systems, procedure NA below -9°C (16°F) or above 48°C (118°F). Simultaneous approach authorized. GPS required. Use of FD or AP required during simultaneous operations. For inop ALS, increase RNP 0.19\* all Cats visibility to RVR 6000 and RNP 0.30 all Cats visibility to 1 3/4 SM.

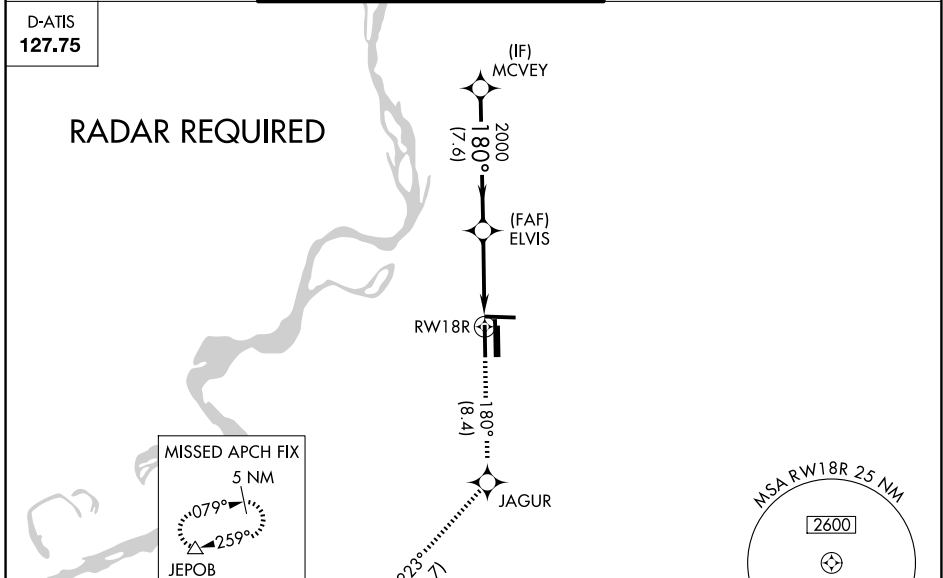


**MISSED APPROACH:** Climb to 5000 on track 180° to JAGUR and on track 223° to JEPOB and hold. \*Missed approach requires minimum climb of 425 feet per NM to 1000.

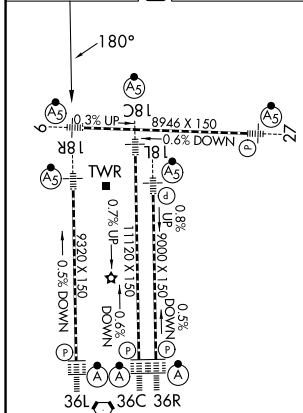
MEMPHIS APP CON <b>119.1 291.6</b> (176°-355°) <b>125.8 338.3</b> (356°-175°)	MEMPHIS TOWER (Rwy 9-27) <b>118.3 257.8</b> (Rwys 18C-36C, 18L-36R) <b>119.7 257.8</b> (Rwy 18R-36L) <b>128.425 257.8</b>	GND CON (Rwy 9-27) <b>121.0 379.2</b> (Rwys 18C-36C, 18L-36R) <b>121.9 379.2</b> (Rwy 18R-36L) <b>121.65 379.2</b>
---	--	---

D-ATIS  
**127.75**

**RADAR REQUIRED**



ELEV 341	<b>D</b>	TDZE 295
----------	----------	----------



5000	tr 180°	JAGUR	tr 223°	JEPOB
CATEGORY	A	B	C	D
RNP 0.19 DA *		645/40	350 (400-3/4)	
RNP 0.30 DA		771/60	476 (500-1/4)	

TDZL/RCLS Rwys 18L, 18C, 18R, 36R, 36C, and 36L  
HIRL all rwwys

MEMPHIS, TENNESSEE  
Orig-E 29MAR18

35°03'N-89°59'W

# RNAV (RNP) Y RWY 18R

SE-1, 14 MAY 2026 to 11 JUN 2026