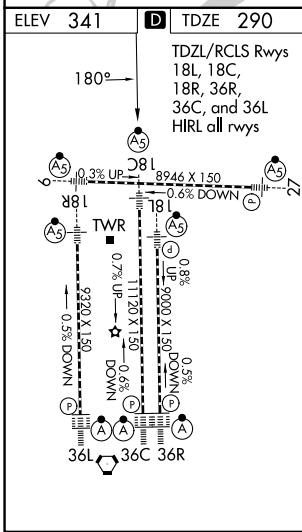
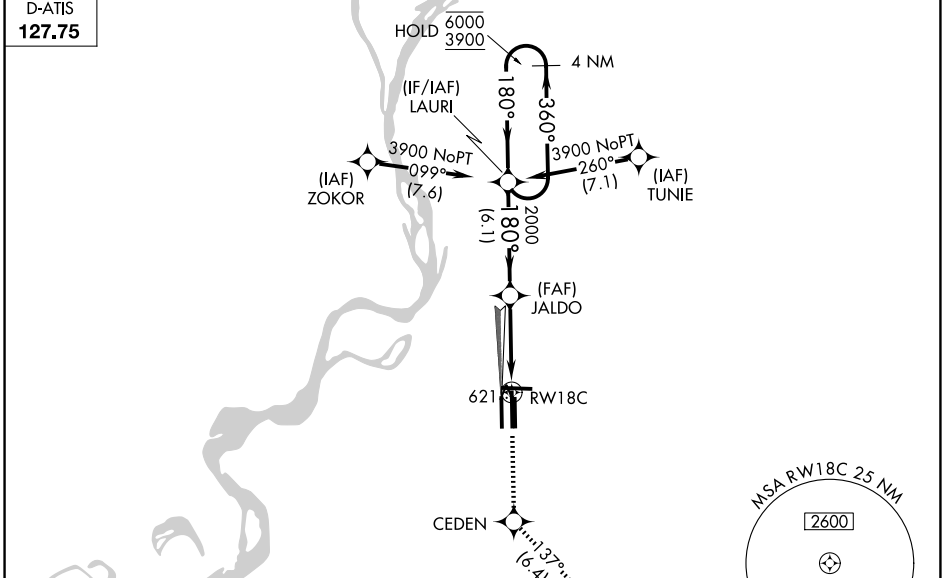


WAAS CH 97507 W18D	APP CRS 180°	Rwy Ldg TDZE Apt Elev	11120 290 341
--	------------------------	-----------------------------	--

RNAV (GPS) Z RWY 18C

FREDERICK W SMITH INTL/MEMPHIS (MEM)

RNP APCH - GPS.		MALSRL	MISSED APPROACH: Climb to 5000 direct CEDEN and on track 137° to KEEZE and hold, continue climb-in-hold to 5000.
<p>Simultaneous approach authorized. For uncompensated Baro-VNAV systems, LNAV/VNAV NA below -15°C or above 54°C. Use of FD or AP required during simultaneous operations. LNAV procedure NA during simultaneous operations. For Inop ALS, increase LPV all Cats visibility to RVR 5500 and LNAV/VNAV all Cats visibility to 1½ SM.</p>			
MEMPHIS APP CON	MEMPHIS TOWER	GND CON	
119.1 291.6 (176°-355°)	(Rwy 9-27) 118.3 257.8	(Rwy 9-27) 121.0 379.2	
125.8 338.3 (356°-175°)	(Rwys 18C-36C, 18L-36R) 119.7 257.8	(Rwys 18C-36C, 18L-36R) 121.9 379.2	
	(Rwy 18R-36L) 128.425 257.8	(Rwy 18R-36L) 121.65 379.2	
D-ATIS			
127.75			



ELEV 341	D TDZE 290	TDZL/RCLS Rwys 18L, 18C, 18R, 36R, 36C, and 36L HIRL all rwys	
5000	CEDEN	tr 137°	KEEZE
4 NM Holding Pattern		JALDO	LAURI
RWY 18C		1.7 NM to RWY 18C	2000
1.7 NM		3.5 NM	6.1 NM
CATEGORY		A	B
LPV DA		665/35	375 (400-½)
LNAV/VNAV DA		782/50	492 (500-1)
LNAV MDA		880/24	590 (600-½)
CIRCLING		940-1	599 (600-1)
		880-1¼	590 (600-1¼)
		940-1¾	1020-2 ¼
		599 (600-1¾)	679 (700-2¼)

SE-1, 14 MAY 2026 to 11 JUN 2026

SE-1, 14 MAY 2026 to 11 JUN 2026