

(SELPH7.SELPH) 26078

AL-253 (FAA)

FREDERICK W SMITH INTL/MEMPHIS (M.E.M)

SELPH SEVEN DEPARTURE (RNAV)

MEMPHIS, TENNESSEE

D-ATIS

127.75

CLINC DEL

125.2

CPDLC

GND CON

121.0 379.2 (Rwy 9-27)

121.9 379.2 (Rwys 18C-36C, 18L-36R)

121.65 379.2 (Rwy 18R-36L)

MEMPHIS TOWER

118.3 257.8 (Rwy 9-27)

119.7 257.8 (Rwys 18C-36C, 18L-36R)

128.425 257.8 (Rwy 18R-36L)

MEMPHIS DEP CON

124.15 385.45

**TOP ALTITUDE:
5000**

NOTE: DME/DME/IRU or GPS required.

NOTE: RNAV 1.

NOTE: Turbojets only.

NOTE: Takeoff Rwy 18L/C/R, 36L/C/R:
RADAR required for non-GPS equipped aircraft.

NOTE: Takeoff Rwy 9, 27 - RADAR required.

NOTE: Transponder code will be issued via
PDC or Memphis clearance delivery.

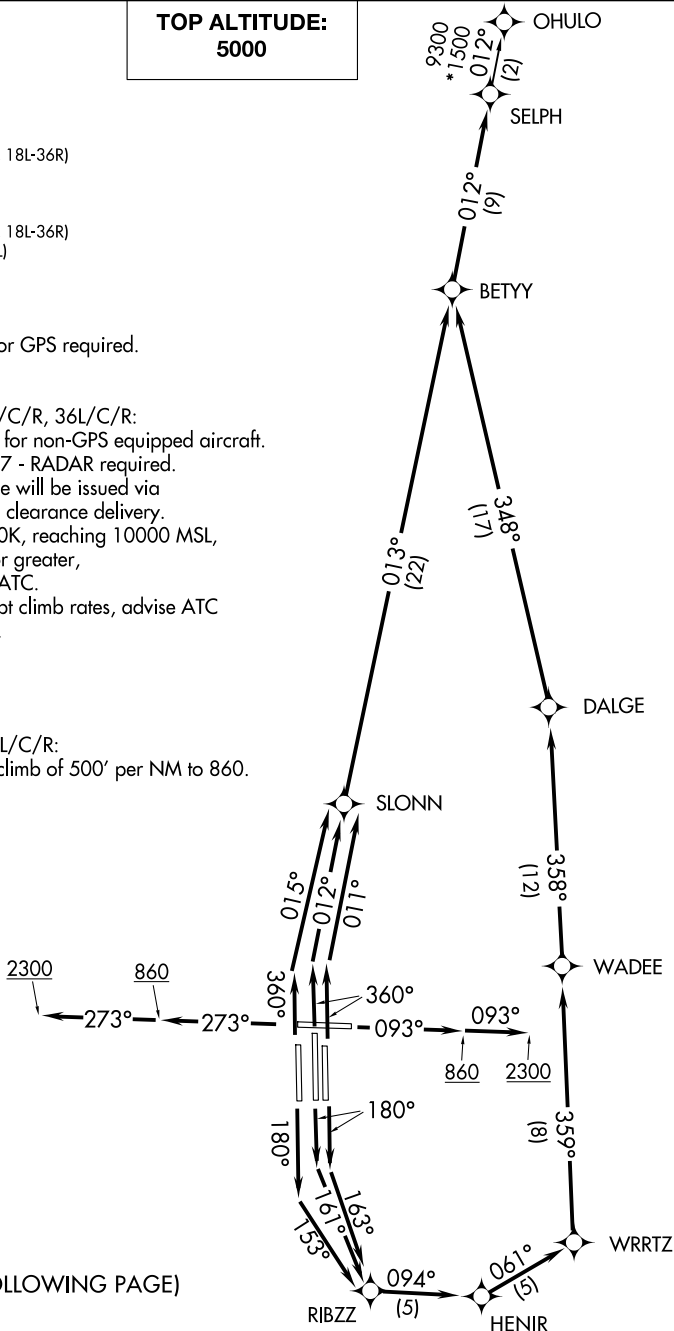
NOTE: Accelerate to 250K, reaching 10000 MSL,
maintain 250K or greater,
if unable advise ATC.

NOTE: If unable to accept climb rates, advise ATC
on initial contact.

TAKEOFF MINIMUMS:

Rwy 9, 18L/C/R, 27, 36L/C/R:

Standard with minimum climb of 500' per NM to 860.



(CONTINUED ON FOLLOWING PAGE)

NOTE: Chart not to scale.

SE-1, 14 MAY 2026 to 11 JUN 2026

SE-1, 14 MAY 2026 to 11 JUN 2026

SELPH SEVEN DEPARTURE (RNAV)

(SELPH7.SELPH) 31DEC20

MEMPHIS, TENNESSEE

FREDERICK W SMITH INTL/MEMPHIS (M.E.M)



DEPARTURE ROUTE DESCRIPTION

TAKEOFF RUNWAY 9: Climb on heading 093° to 860, then continue climb to 2300 on heading 093° or as assigned by ATC, for RADAR vectors to BETYY, then on depicted route to SELPH, thence . . .

TAKEOFF RUNWAY 18C: Climb on heading 180° to intercept course 161° to RIBZZ, then on depicted route to SELPH, thence . . .

TAKEOFF RUNWAY 18L: Climb on heading 180° to intercept course 163° to RIBZZ, then on depicted route to SELPH, thence . . .

TAKEOFF RUNWAY 18R: Climb on heading 180° to intercept course 153° to RIBZZ, then on depicted route to SELPH, thence . . .

TAKEOFF RUNWAY 27: Climb on heading 273° to 860, then continue climb to 2300 on heading 273° or as assigned by ATC, for RADAR vectors to BETYY, then on depicted route to SELPH, thence . . .

TAKEOFF RUNWAY 36C: Climb on heading 360° to intercept course 012° to SLONN, then on depicted route to SELPH, thence . . .

TAKEOFF RUNWAY 36L: Climb on heading 360° to intercept course 015° to SLONN, then on depicted route to SELPH, thence . . .

TAKEOFF RUNWAY 36R: Climb on heading 360° to intercept course 011° to SLONN, then on depicted route to SELPH, thence . . .

. . . maintain 5000. Expect clearance to filed altitude within ten (10) minutes after departure.

OHULO TRANSITION (SELPH7.OHULO)

SE-1, 14 MAY 2026 to 11 JUN 2026

SE-1, 14 MAY 2026 to 11 JUN 2026