

VANZE THREE ARRIVAL (RNAV)

FREDERICK W SMITH INTL/MEMPHIS (MEM)

SE-1, 14 MAY 2026 to 11 JUN 2026

GRAMM TRANSITION [GRAMM.VANZE3]:
TALLO TRANSITION [TALLO.VANZE3]:
WASER TRANSITION [WASER.VANZE3]:

LANDING SOUTH: RUNWAY 18L/18C/18R: From over VANZE on track 287° to MASHH, cross MASHH at/below 16000 and at/above 14000 at 280K, then on track 286° to HI VORTAC, then on track 303° to LARUE, cross LARUE at/below 12000 and at/above 10000 at 250K, then on track 302° to FLOND, cross FLOND at/below 11000 and at/above 9000, then on track 302° to SUUZE, then on track 360° to MEBEE, cross MEBEE at/below 10000 and at/above 8000 at 210K, then on track 360° to HADSO, cross HADSO at/below 8000 and at/above 6000, then on track 360° to HEXIN, cross HEXIN at 3000, then on track 360°. Expect radar vectors to final approach course.

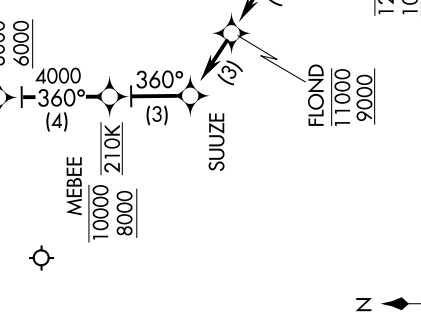
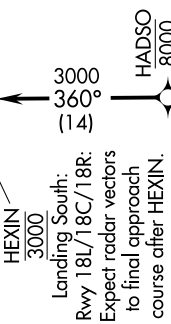
LANDING NORTH: RUNWAY 36L/36C/36R/9/27: From over VANZE on track 284° to CHLMR, cross CHLMR at 10000 at 230K, then on track 284°. Expect radar vectors to final approach course.

RNAV 1 - DME/DME/IRU or GPS required.
 RADAR required.

MEMPHIS APP CON
 119.1 291.6 (176°-355°)
 125.8 338.3 (356°-175°)
 D-ATIS
 127.75

HEXIN
 3000

Landing South:
 Rwy 18L/18C/18R:
 Expect radar vectors
 to final approach
 course after HEXIN.



NOTE: Expect to receive landing direction (North/South) and "Descend via" clearance from Memphis Center. Memphis approach will assign landing runway.



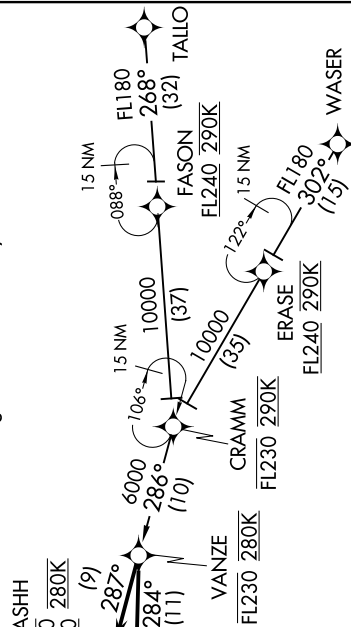
NOTE: Chart not to scale.

NOTE: Descend via Mach number until transition to 290K.

NOTE: Jet aircraft only.

NOTE: Landing South indicates Rwy 18L/18C/18R.

Landing North indicates Rwy 36L/36C/36R/9/27.



VANZE THREE ARRIVAL (RNAV)

FREDERICK W SMITH INTL/MEMPHIS (MEM)
MEMPHIS, TENNESSEE

14JUL22

SE-1, 14 MAY 2026 to 11 JUN 2026