

WAAS CH <b>48833</b> <b>W22A</b>	APP CRS <b>226°</b>	Rwy Ldg TDZE Apt Elev	<b>5052</b> <b>298</b> <b>298</b>
--	------------------------	-----------------------------	---

# RNAV (GPS) RWY 22

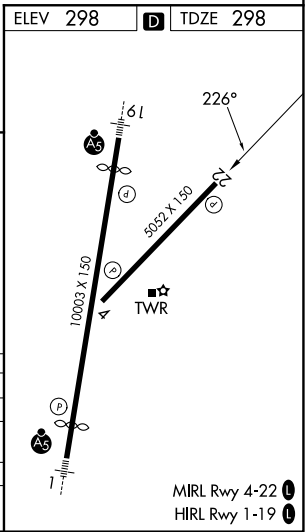
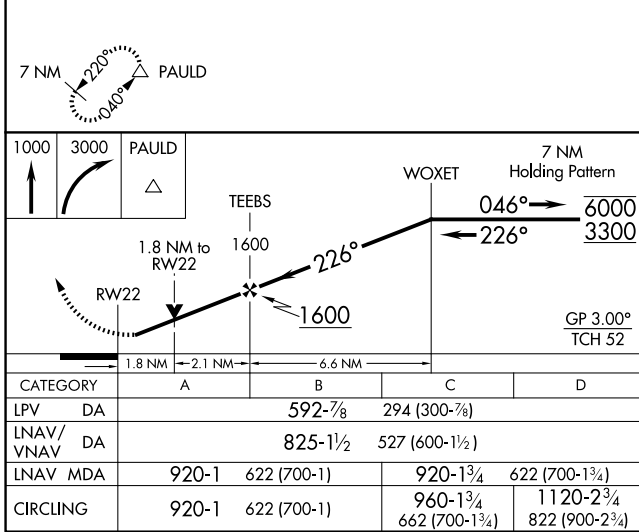
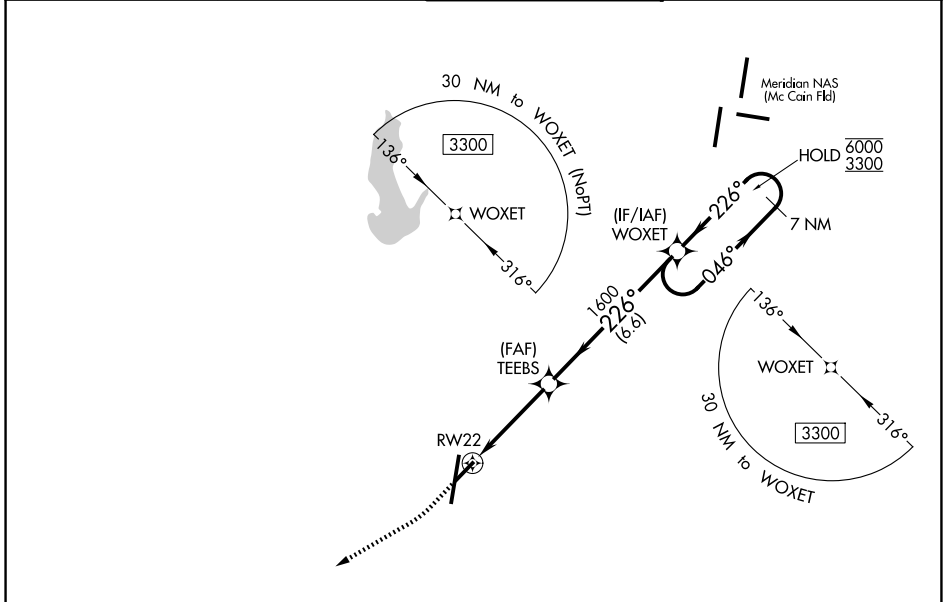
KEY FLD (MEI)

RNP APCH - GPS.

▼ Rwy 22 helicopter visibility reduction below 3/4 SM NA.  
 ▲ For uncompensated Baro-VNAV systems, LNAV/VNAV NA below -7°C or above 54°C.  
 ▲ Circling NA east of Rwy 1 and southeast of Rwy 22.

MISSED APPROACH: Climb to 1000 then climbing right turn to 3000 direct PAULD and hold.

ATIS <b>126.475 291.675</b>	MERIDIAN APP CON* <b>120.5 269.325</b>	KEY TOWER* <b>133.975 (CTAF) 257.8</b>	GND CON <b>121.9 348.6</b>	UNICOM <b>122.95</b>
--------------------------------	---	---	-------------------------------	-------------------------



SC-4, 14 MAY 2026 to 11 JUN 2026

SC-4, 14 MAY 2026 to 11 JUN 2026