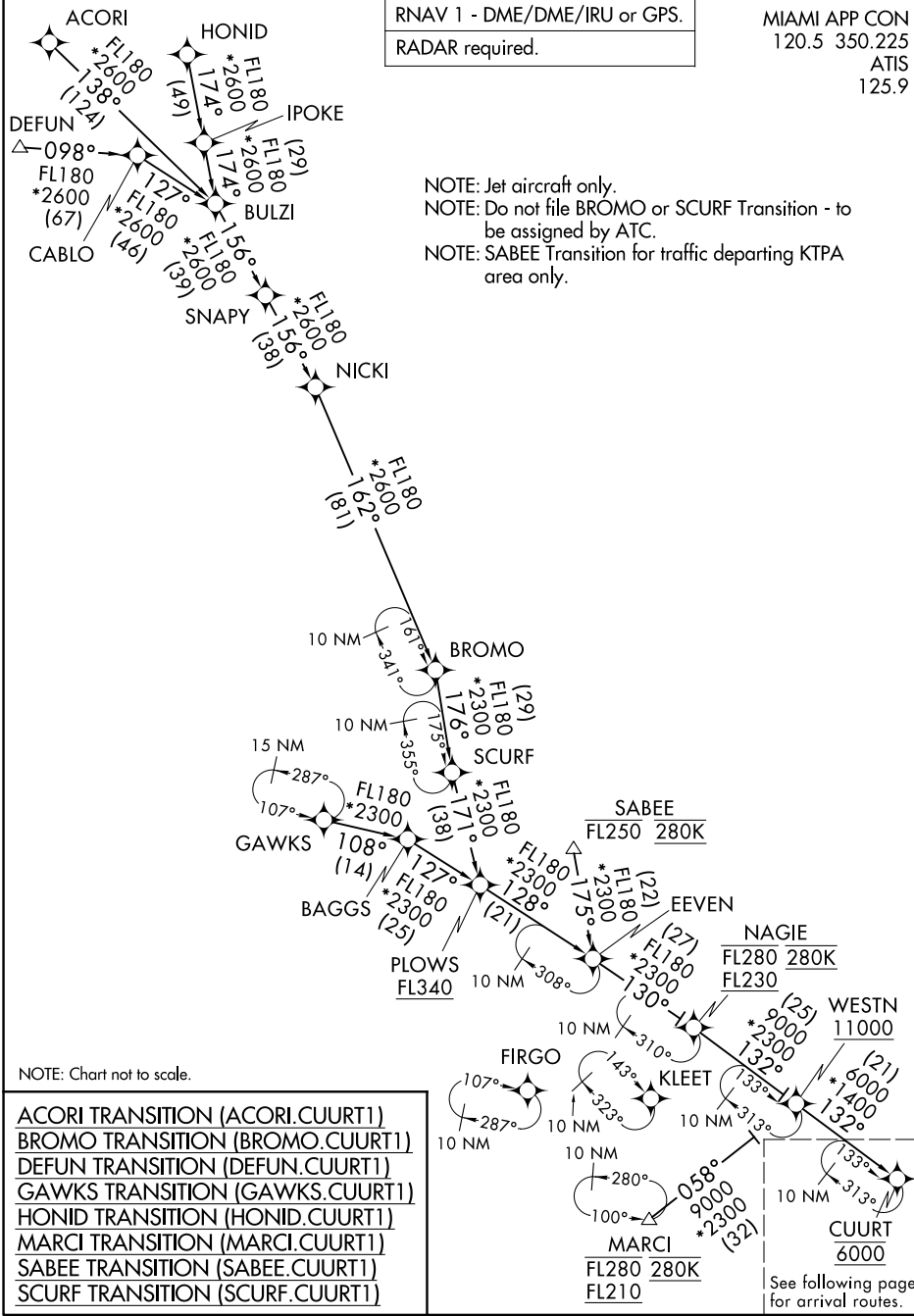


CUURT ONE ARRIVAL (RNAV) Transition Routes

MIAMI, FLORIDA

RNAV 1 - DME/DME/IRU or GPS.
RADAR required.

MIAMI APP CON
120.5 350.225
ATIS
125.9



CUURT ONE ARRIVAL (RNAV) Transition Routes

MIAMI, FLORIDA

SE-3, 14 MAY 2026 to 11 JUN 2026

SE-3, 14 MAY 2026 to 11 JUN 2026

CUURT ONE ARRIVAL (RNAV) Arrival Routes

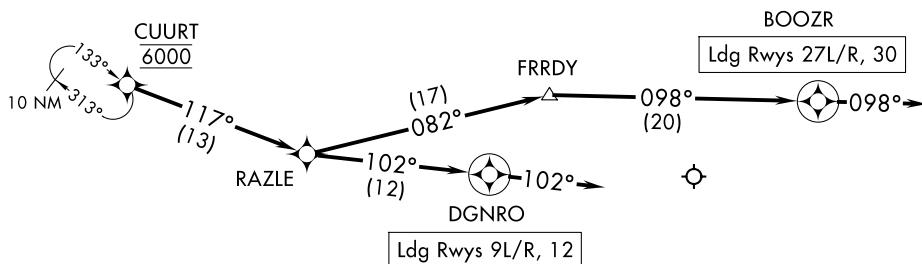
MIAMI, FLORIDA

RNAV 1 - DME/DME/IRU or GPS.

RADAR required.

MIAMI APP CON
120.5 350.225
ATIS
125.9

NOTE: Jet aircraft only.
NOTE: Landing east use Rwy 9L Transition, landing west use Rwy 27R Transition.
Expect runway assignment from MIA approach prior to CUURT.
NOTE: Between 2300L and 0700L expect Rwy 12.



SE-3, 14 MAY 2026 to 11 JUN 2026

SE-3, 14 MAY 2026 to 11 JUN 2026

NOTE: Chart not to scale.

ARRIVAL ROUTE DESCRIPTION

From CUURT on track 117° to RAZLE.

LANDING RUNWAYS 9L/R, 12: From RAZLE on track 102° to DGNRO, then on track 102°. Expect RADAR vectors to final approach course.

LANDING RUNWAYS 27L/R, 30: From RAZLE on track 082° to FRRDY, then on track 098° to BOOZR, then on track 098°. Expect RADAR vectors to final approach course.