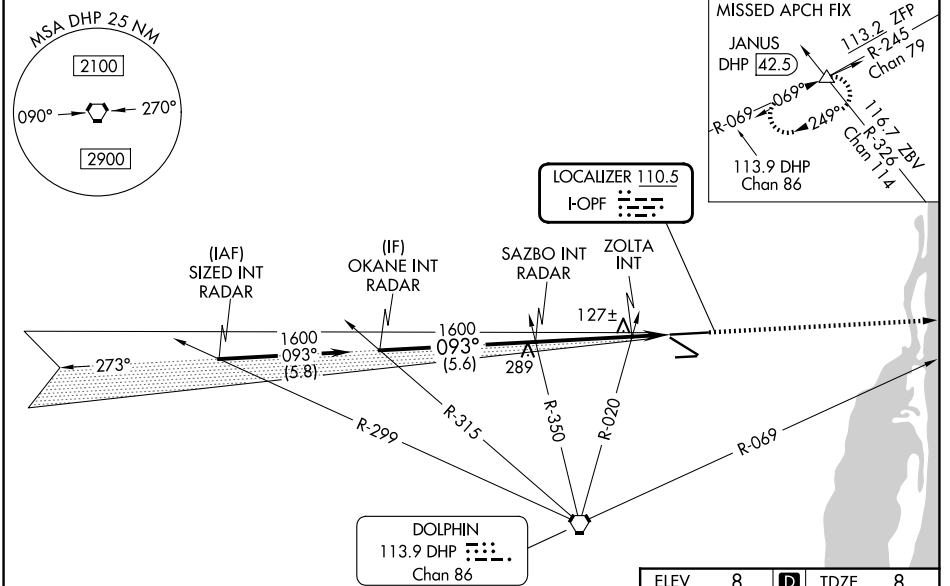


LOC I-OPF <b>110.5</b>	APP CRS <b>093°</b>	Rwy Ldg TDZE Apt Elev	<b>8002</b> <b>8</b> <b>8</b>
---------------------------	------------------------	-----------------------------	-------------------------------------

# ILS or LOC RWY 9L

MIAMI-OPA LOCKA EXEC (OPF)

RADAR required.						MISSED APPROACH: Climb to 2000 on heading 093° and DHP VORTAC R-069 to JANUS INT/DHP 42.5 DME and hold.
Inop table does not apply to S-ILS 9L all Cats. Rwy 9L helicopter visibility reduction below 3/4 SM NA. For inop ALS, increase S-LOC 9L Cats A and B visibility to 1 SM and Cats C and D visibility to 1 3/4 SM. ZOLTA Fix Minimums, for inop ALS, increase S-LOC 9L all Cats visibility to 1 SM. Autopilot coupled approach NA below 400 feet. Caution: Lights on highway 0.7 NM north may be mistaken for runway.						
ATIS <b>125.9</b>	MIAMI APP CON <b>128.6 306.975</b>	OPA LOCKA TOWER ★ <b>134.675 (CTAF) 0</b>		GND CON <b>120.025</b>	CLNC DEL <b>119.2</b>	GCO <b>119.45</b>



VGSi and ILS glidepath not coincident (VGSi Angle 3.00/TCH 55). 2000 DHP R-069 JANUS hdg 093°					
OKANE INT RADAR, SAZBO INT RADAR, ZOLTA INT, 1600 093°, GS 3.00° TCH 51, 5.6 NM, 3.3 NM, 1.5 NM, 480		8002 X 150, 6800 X 150, TWR, 4309 X 100, 271.30		MRL Rwy 9R-27L, HIRL Rwys 9L-27R and 12-30, FAF to MAP 4.8 NM	
CATEGORY	A	B	C	D	
S-ILS 9L	258-3/4		250 (300-3/4)		
S-LOC 9L	480-3/4	472 (500-3/4)	480-1	472 (500-1)	
CIRCLING	480-1 472 (500-1)	520-1 512 (600-1)	620-1 3/4 612 (700-1 3/4)	740-2 1/4 732 (800-2 1/4)	
ZOLTA FIX MINIMUMS					
S-LOC 9L	380-3/4		372 (400-3/4)		
CIRCLING	480-1 472 (500-1)	520-1 512 (600-1)	620-1 3/4 612 (700-1 3/4)	740-2 1/4 732 (800-2 1/4)	
Knots		60	90	120	150 180
Min:Sec		4:48	3:12	2:24	1:55 1:36

SE-3, 14 MAY 2026 to 11 JUN 2026

SE-3, 14 MAY 2026 to 11 JUN 2026