

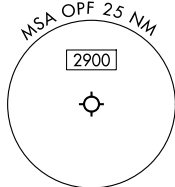
MIAMI TWO DEPARTURE  
(MIA2.MIA) 26DEC24

MIAMI, FLORIDA  
MIAMI-OPA LOCKA EXEC (OPT)  
(MIA2.MIA) 26DEC24

**TOP ALTITUDE: AS  
ASSIGNED BY ATC**

**RADAR and DME required.**

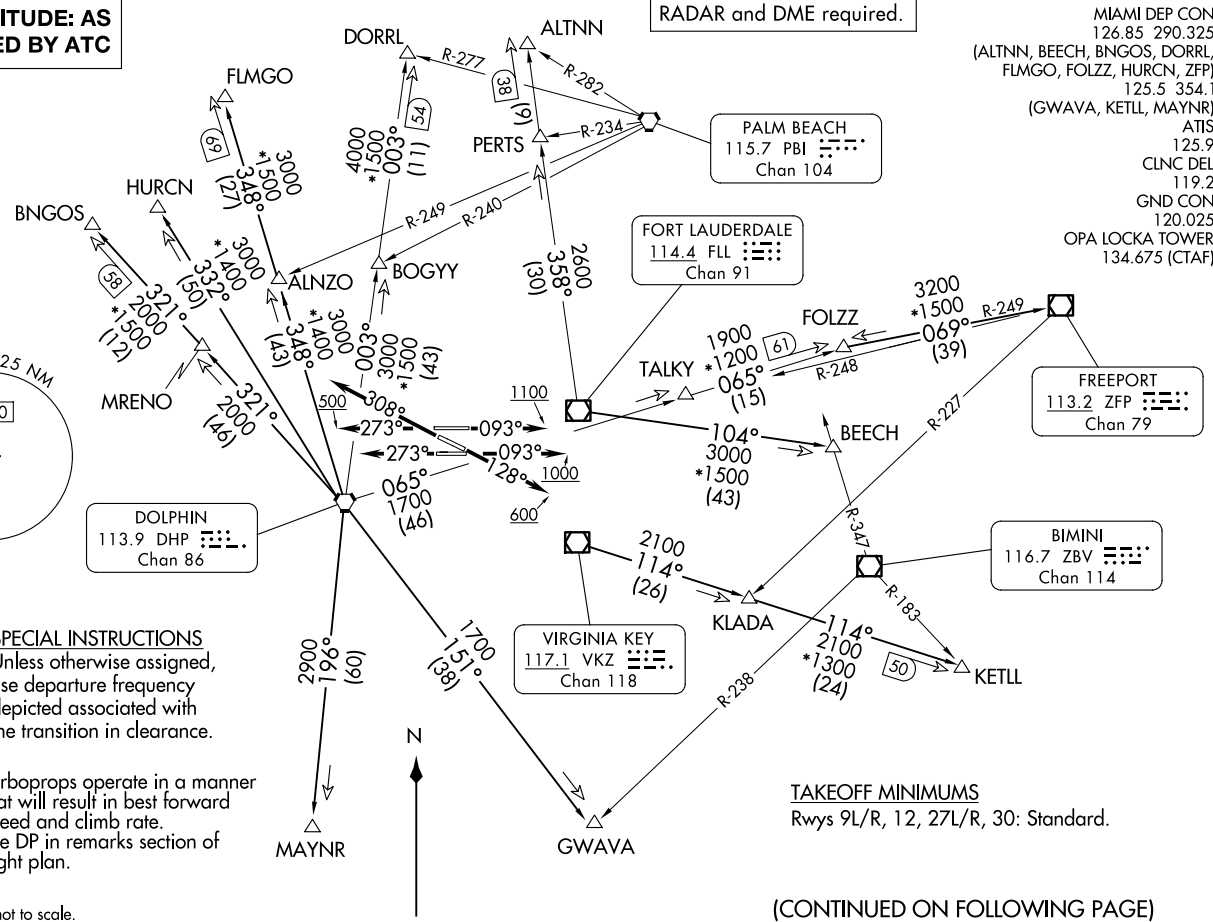
MIAMI DEP CON  
126.85 290.325  
(ALTNN, BEECH, BNGOS, DORRL,  
FLMGO, FOLZZ, HURCN, ZFP)  
125.5 354.1  
(GWAVA, KETLL, MAYNR)  
ATIS  
125.9  
CLNC DEL  
119.2  
GND CON  
120.025  
OPA LOCKA TOWER\*  
134.675 (CTAF)



**SPECIAL INSTRUCTIONS**  
Unless otherwise assigned,  
use departure frequency  
depicted associated with  
the transition in clearance.

NOTE: Turboprops operate in a manner  
that will result in best forward  
speed and climb rate.  
NOTE: File DP in remarks section of  
flight plan.

NOTE: Chart not to scale.



**TAKEOFF MINIMUMS**  
Rwys 9L/R, 12, 27L/R, 30: Standard.

(CONTINUED ON FOLLOWING PAGE)

MIAMI TWO DEPARTURE  
(MIA2.MIA) 26331

MIAMI-OPA LOCKA EXEC (OPT)  
MIAMI, FLORIDA  
AL-256 (FAA)

# MIAMI TWO DEPARTURE



## DEPARTURE ROUTE DESCRIPTION

TAKEOFF RUNWAY 9L: Climb on heading 093° to 1100 before turning north, thence...

TAKEOFF RUNWAY 9R: Climb on heading 093° to 1000 before turning north, thence...

TAKEOFF RUNWAY 12: Climb on heading 128° to 600 before turning north, thence...

TAKEOFF RUNWAY 27L: Climb on heading 273° thence...

TAKEOFF RUNWAY 27R: Climb on heading 273° to 500 before turning north, thence...

TAKEOFF RUNWAY 30: Climb on heading 308° thence...

... on transition, maintain ATC assigned altitude. Expect filed altitude 10 minutes after departure.

ALTNN TRANSITION (MIA2.ALTNN): From over FLL VOR/DME on FLL R-358 to ALTNN.

BEECH TRANSITION (MIA2.BEECH): From over FLL VOR/DME on FLL R-104 to BEECH.

BNGOS TRANSITION (MIA2.BNGOS): From over DHP VORTAC on DHP R-321 to BNGOS.

DORRL TRANSITION (MIA2.DORRL): From over DHP VORTAC on DHP R-003 to DORRL.

FLMGO TRANSITION (MIA2.FLMGO): From over DHP VORTAC on DHP R-348 to FLMGO.

FOLZZ TRANSITION (MIA2.FOLZZ): From over DHP VORTAC on DHP R-065 to FOLZZ.

FREEPORT TRANSITION (MIA2.ZFP): From over DHP VORTAC on DHP R-065 to FOLZZ then on ZFP R-249 to ZFP VOR/DME.

GWAVA TRANSITION (MIA2.GWAVA): From over DHP VORTAC on DHP R-151 to GWAVA.

HURCN TRANSITION (MIA2.HURCN): From over DHP VORTAC on DHP R-332 to HURCN.

KETLL TRANSITION (MIA2.KETLL): From over VKZ VOR/DME on VKZ R-114 to KETLL.

MAYNR TRANSITION (MIA2.MAYNR): From over DHP VORTAC on DHP R-196 to MAYNR.

SE-3, 14 MAY 2026 to 11 JUN 2026

SE-3, 14 MAY 2026 to 11 JUN 2026