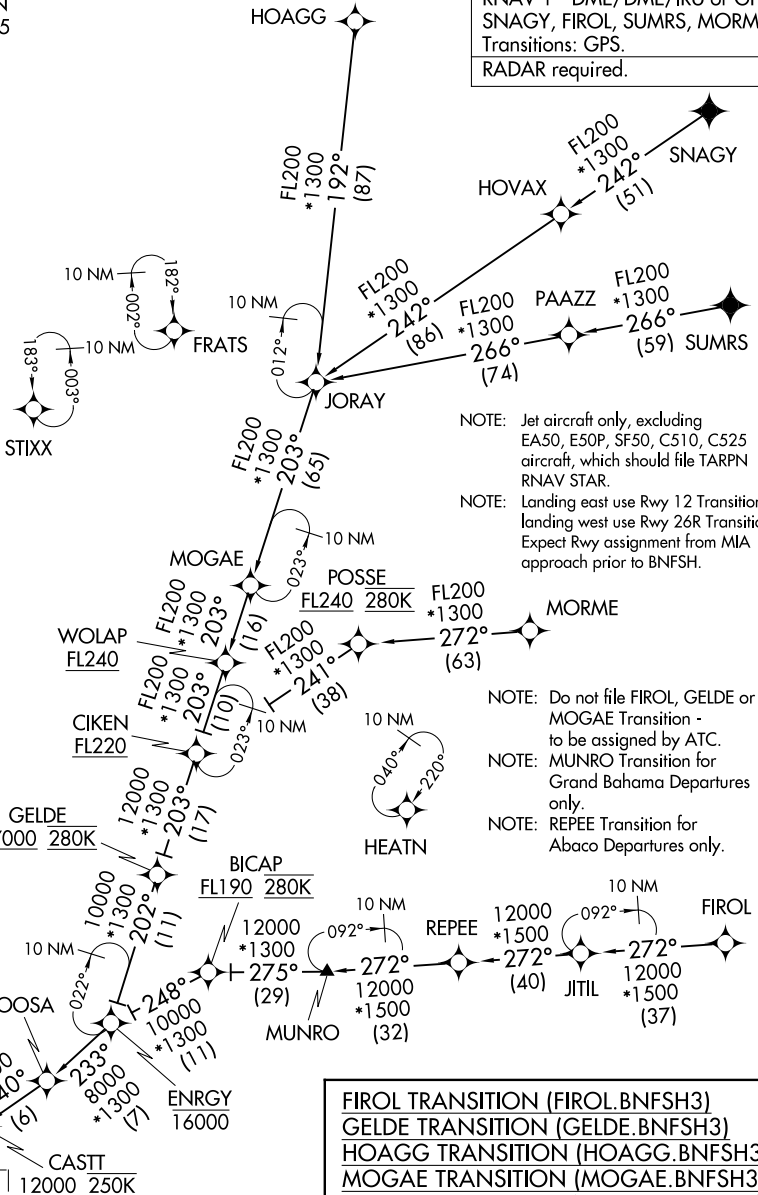


# BNFSH THREE ARRIVAL (RNAV) Transition Routes

MIAMI, FLORIDA

MIAMI APP CON  
 124.85 263.025  
 KHST ATIS \*  
 132.275 269.9  
 MIA D-ATIS  
 119.15  
 TMB ATIS  
 124.0

RNAV 1 - DME/DME/IRU or GPS.  
 SNAGY, FIROL, SUMRS, MORME  
 Transitions: GPS.  
 RADAR required.



NOTE: Jet aircraft only, excluding EA50, E50P, SF50, C510, C525 aircraft, which should file TARPEN RNAV STAR.  
 NOTE: Landing east use Rwy 12 Transition, landing west use Rwy 26R Transition. Expect Rwy assignment from MIA approach prior to BNFSH.

NOTE: Do not file FIROL, GELDE or MOGAE Transition - to be assigned by ATC.  
 NOTE: MUNRO Transition for Grand Bahama Departures only.  
 NOTE: REPEE Transition for Abaco Departures only.

- FIROL TRANSITION (FIROL.BNFSH3)
- GELDE TRANSITION (GELDE.BNFSH3)
- HOAGG TRANSITION (HOAGG.BNFSH3)
- MOGAE TRANSITION (MOGAE.BNFSH3)
- MORME TRANSITION (MORME.BNFSH3)
- MUNRO TRANSITION (MUNRO.BNFSH3)
- REPEE TRANSITION (REPEE.BNFSH3)
- SNAGY TRANSITION (SNAGY.BNFSH3)
- SUMRS TRANSITION (SUMRS.BNFSH3)

BNFSH  
 11000  
 See following page for arrival routes.

(CONTINUED ON FOLLOWING PAGE)  
 NOTE: Chart not to scale.

SE-3, 14 MAY 2026 to 11 JUN 2026

SE-3, 14 MAY 2026 to 11 JUN 2026

# BNFSH THREE ARRIVAL (RNAV) Transition Routes

MIAMI, FLORIDA

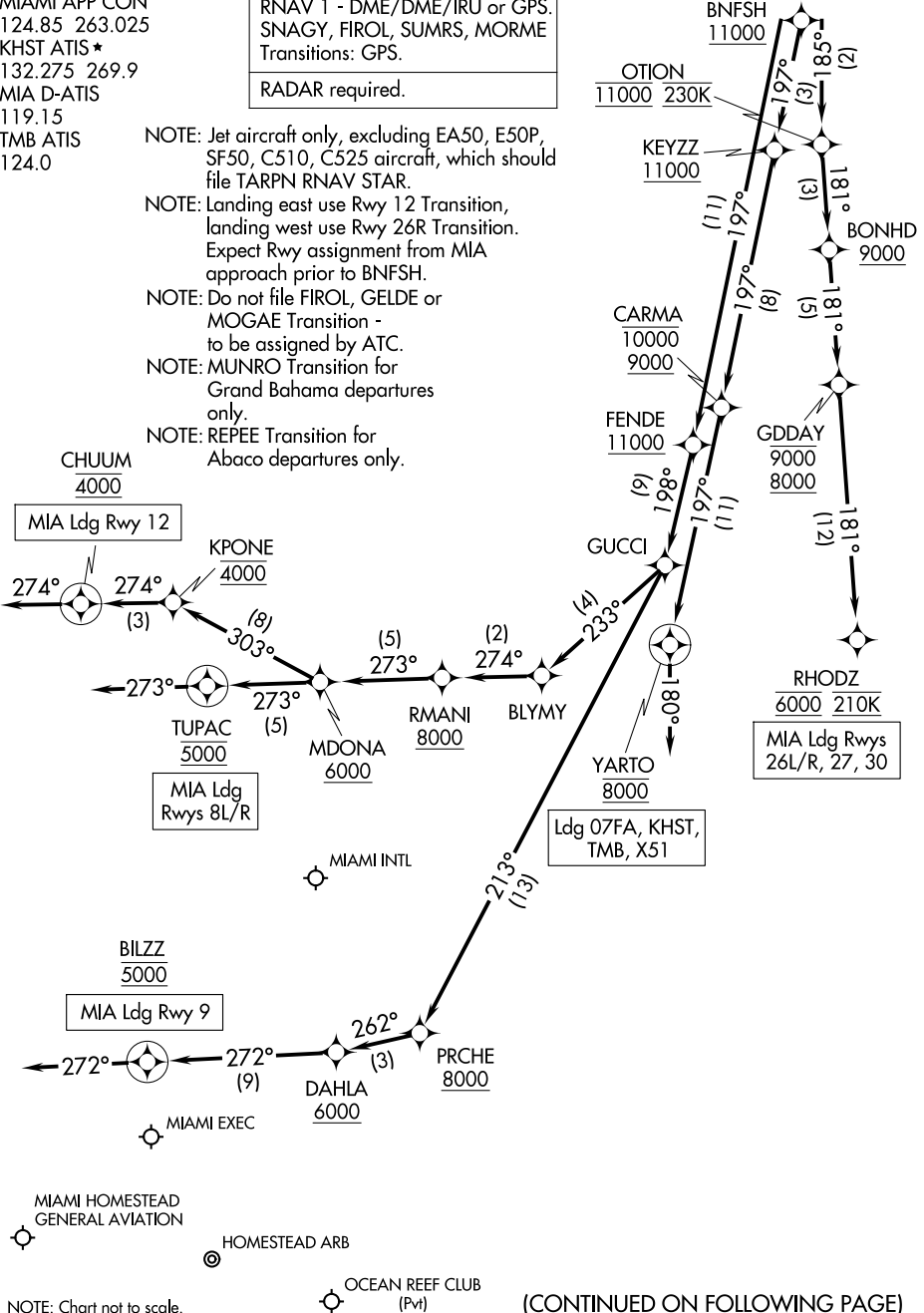
# BNFSH THREE ARRIVAL (RNAV) Arrival Routes

MIAMI, FLORIDA

MIAMI APP CON  
 124.85 263.025  
 KHST ATIS ★  
 132.275 269.9  
 MIA D-ATIS  
 119.15  
 TMB ATIS  
 124.0

RNAV 1 - DME/DME/IRU or GPS.  
 SNAGY, FIROL, SUMRS, MORME  
 Transitions: GPS.  
 RADAR required.

- NOTE: Jet aircraft only, excluding EA50, E50P, SF50, C510, C525 aircraft, which should file TARPEN RNAV STAR.
- NOTE: Landing east use Rwy 12 Transition, landing west use Rwy 26R Transition. Expect Rwy assignment from MIA approach prior to BNFSH.
- NOTE: Do not file FIROL, GELDE or MOGAE Transition - to be assigned by ATC.
- NOTE: MUNRO Transition for Grand Bahama departures only.
- NOTE: REPEE Transition for Abaco departures only.



SE-3, 14 MAY 2026 to 11 JUN 2026

SE-3, 14 MAY 2026 to 11 JUN 2026

NOTE: Chart not to scale.

(CONTINUED ON FOLLOWING PAGE)

# BNFSH THREE ARRIVAL (RNAV) Arrival Routes

MIAMI, FLORIDA

## ARRIVAL ROUTE DESCRIPTION

LANDING MIA RUNWAYS 8L/R: From BNFSH on track 197° to cross FENDE at or above 11000, then on track 198° to GUCCI, then on track 233° to BLYMY, then on track 274° to cross RMANI at or above 8000, then on track 273° to cross MDONA at or above 6000, then on track 273° to cross TUPAC at 5000, then on track 273°. Expect RADAR vectors to final approach course.

LANDING MIA RUNWAY 9: From BNFSH on track 197° to cross FENDE at or above 11000, then on track 198° to GUCCI, then on track 213° to cross PRCHE at or above 8000, then on track 262° to cross DAHLA at or above 6000, then on track 272° to cross BILZZ at 5000, then on track 272°. Expect RADAR vectors to final approach course.

LANDING MIA RUNWAY 12: From BNFSH on track 197° to cross FENDE at or above 11000, then on track 198° to GUCCI, then on track 233° to BLYMY, then on track 274° to cross RMANI at or above 8000, then on track 273° to cross MDONA at or above 6000, then on track 303° to cross KPONE at 4000, then on track 274° to cross CHUUM at 4000, then on track 274°. Expect RADAR vectors to final approach course.

LANDING MIA RUNWAYS 26L/R, 27, 30: From BNFSH on track 185° to cross OTION at 11000 and at 230K, then on track 181° to cross BONHD at or above 9000, then on track 181° to cross GDDAY between 8000 and 9000, then on track 181° to cross RHODZ at 6000 and at 210K. Expect assigned instrument approach to Rwy 26L/R or RADAR vectors to final approach course for Rwys 27, 30.

LANDING 07FA/X51/KHST/TMB: From BNFSH on track 197° to cross KEYZZ at or above 11000, then on track 197° to cross CARMA between 9000 and 10000, then on track 197° to cross YARTO at 8000, then on heading 180°. Expect RADAR vectors to final approach course.