

BNGOS FOUR DEPARTURE (RNAV)  
(BNGOS4.BNGOS) 21 MAR 24

Departure Routes

MIAMI, FLORIDA  
MIAMI INTL (MIA)

BNGOS See following page for transition routes.

RNAV-1 DME/DME/IRU or GPS.  
RADAR required.

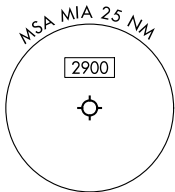
TOP ALTITUDE:  
5000

MIAMI DEP CON  
126.85 290.325  
D-ATIS  
133.675  
CLNC DEL  
135.35  
CPDLC  
GND CON  
(8L/R, 12, 26L/R)  
121.8 348.6  
(9, 27, 30)  
127.5 348.6  
MIAMI TOWER  
118.3 256.9

(BNGOS4.BNGOS) 25331  
BNGOS FOUR DEPARTURE (RNAV)

AL-257 (FAA)  
Departure Routes

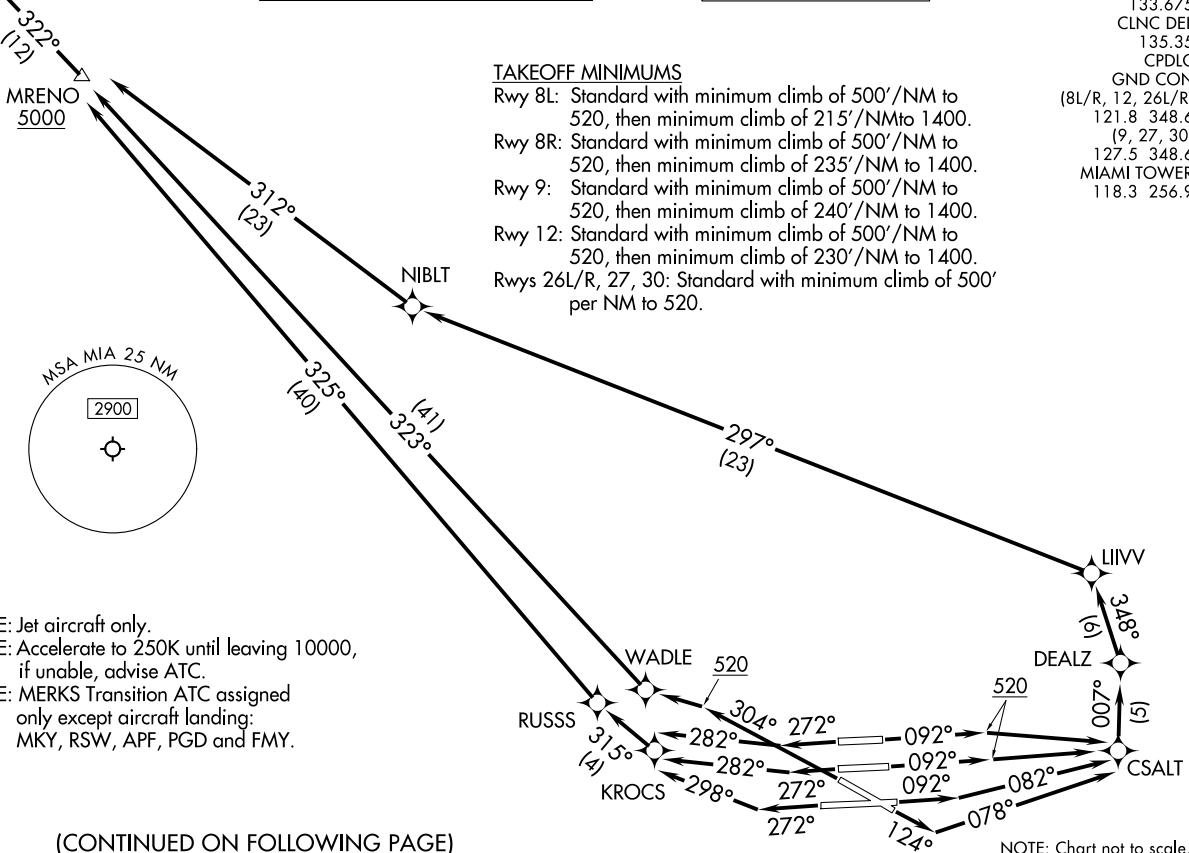
MIAMI INTL (MIA)  
MIAMI, FLORIDA



NOTE: Jet aircraft only.  
NOTE: Accelerate to 250K until leaving 10000, if unable, advise ATC.  
NOTE: MERKS Transition ATC assigned only except aircraft landing: MKY, RSW, APF, PGD and FMY.

TAKEOFF MINIMUMS

- Rwy 8L: Standard with minimum climb of 500'/NM to 520, then minimum climb of 215'/NM to 1400.
- Rwy 8R: Standard with minimum climb of 500'/NM to 520, then minimum climb of 235'/NM to 1400.
- Rwy 9: Standard with minimum climb of 500'/NM to 520, then minimum climb of 240'/NM to 1400.
- Rwy 12: Standard with minimum climb of 500'/NM to 520, then minimum climb of 230'/NM to 1400.
- Rwys 26L/R, 27, 30: Standard with minimum climb of 500' per NM to 520.



(CONTINUED ON FOLLOWING PAGE)

NOTE: Chart not to scale.

(BNGOS4.BNGOS) 25331

AL-257 (FAA)

MIAMI INTL (MIA)  
MIAMI, FLORIDA

# BNGOS FOUR DEPARTURE (RNAV) Transition Routes

MIAMI DEP CON  
126.85 290.325  
D-ATIS  
133.675  
CLNC DEL  
135.35  
CPDIC  
GND CON  
121.8 348.6 (8L/R, 12, 26L/R)  
127.5 348.6 (9, 27, 30)  
MIAMI TOWER  
118.3 256.9

RNAV-1 DME/DME/IRU or GPS.

RADAR required.

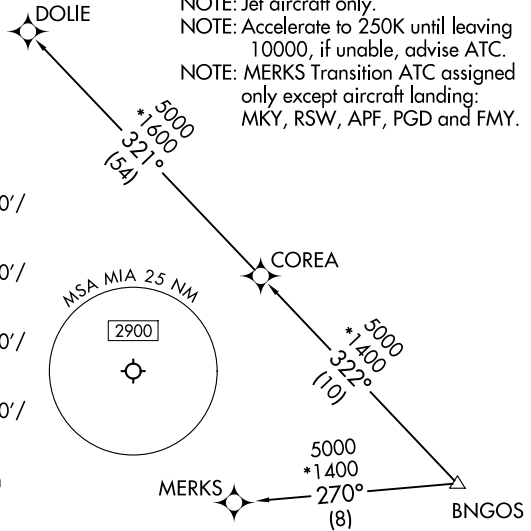
**TOP ALTITUDE:  
5000**

NOTE: Jet aircraft only.  
NOTE: Accelerate to 250K until leaving 10000, if unable, advise ATC.  
NOTE: MERKS Transition ATC assigned only except aircraft landing:  
MKY, RSW, APF, PGD and FMY.

### TAKEOFF MINIMUMS

- Rwy 8L: Standard with minimum climb of 500'/NM to 520, then minimum climb of 215'/NM to 1400.
- Rwy 8R: Standard with minimum climb of 500'/NM to 520, then minimum climb of 235'/NM to 1400.
- Rwy 9: Standard with minimum climb of 500'/NM to 520, then minimum climb of 240'/NM to 1400.
- Rwy 12: Standard with minimum climb of 500'/NM to 520, then minimum climb of 230'/NM to 1400.
- Rwys 26L/R, 27, 30: Standard with minimum climb of 500'/NM to 520.

NOTE: Chart not to scale.



SE-3, 14 MAY 2026 to 11 JUN 2026

SE-3, 14 MAY 2026 to 11 JUN 2026



### DEPARTURE ROUTE DESCRIPTION SEE ADDITIONAL REQUIREMENTS ON AAUP

TAKEOFF RUNWAYS 8L/R: Climb on heading 092° to 520, then direct CSALT, then on track 007° to DEALZ, then on track 348° to LIIVV, then on track 297° to NIBLT, then on track 312° to cross MRENO at or above 5000, thence. . .

TAKEOFF RUNWAY 9: Climb on heading 092° to intercept course 082° to CSALT, then on track 007° to DEALZ, then on track 348° to LIIVV, then on track 297° to NIBLT, then on track 312° to cross MRENO at or above 5000, thence. . .

TAKEOFF RUNWAY 12: Climb on heading 124° to intercept course 078° to CSALT, then on track 007° to DEALZ, then on track 348° to LIIVV, then on track 297° to NIBLT, then on track 312° to cross MRENO at or above 5000, thence. . .

TAKEOFF RUNWAYS 26L/R: Climb on heading 272° to intercept course 282° to KROCS, then on track 315° to RUSSS, then on track 325° to cross MRENO at or above 5000, thence. . .

TAKEOFF RUNWAY 27: Climb on heading 272° to intercept course 298° to KROCS, then on track 315° to RUSSS, then on track 325° to cross MRENO at or above 5000, thence. . .

TAKEOFF RUNWAY 30: Climb on heading 304° to 520, then direct WADLE, then on track 323° to cross MRENO at or above 5000, thence. . .

. . . on track 322° to BNGOS, then on transition, maintain 5000, expect clearance to filed altitude within 10 minutes after departure.

COREA TRANSITION (BNGOS4.COREA)

DOLIE TRANSITION (BNGOS4.DOLIE)

MERKS TRANSITION (BNGOS4.MERKS)

# BNGOS FOUR DEPARTURE (RNAV) Transition Routes

MIAMI, FLORIDA  
MIAMI INTL (MIA)

(BNGOS4.BNGOS) 21MAR24