

# DVALL FOUR ARRIVAL

MIAMI, FLORIDA

MIAMI APP CON  
 120.5 350.225  
 FLL D-ATIS  
 135.0  
 FXE ATIS  
 119.85  
 KHST ATIS \*  
 132.275 269.9  
 MIA D-ATIS  
 119.15  
 OPF ATIS  
 125.9  
 PMP ATIS  
 120.55  
 TMB ATIS  
 124.0

RADAR required. DME required.

**WEVER  
 JET VERTICAL NAVIGATION  
 PLANNING INFORMATION**

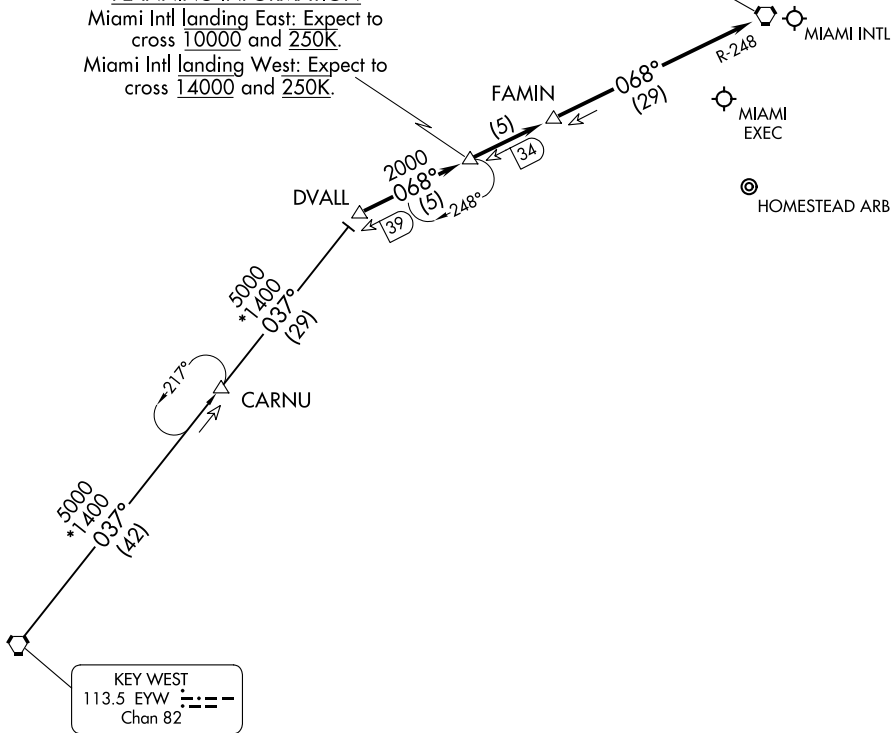
Miami Intl landing East: Expect to cross 10000 and 250K.

Miami Intl landing West: Expect to cross 14000 and 250K.

DOLPHIN  
 113.9 DHP ---  
 Chan 86

POMPANO BEACH AIRPARK  
 FORT LAUDERDALE EXEC  
 FORT LAUDERDALE/HOLLYWOOD INTL

MIAMI-OPA LOCKA EXEC



SE-3, 14 MAY 2026 to 11 JUN 2026

SE-3, 14 MAY 2026 to 11 JUN 2026

NOTE: Chart not to scale.

KEY WEST TRANSITION (EYW.DVALL4): From over EYW VORTAC on EYW R-037 to DVALL. Thence. . . .

. . . .from over DVALL on DHP R-248 to DHP VORTAC. Expect RADAR vectors to final approach course after FAMIN.

# DVALL FOUR ARRIVAL

MIAMI, FLORIDA