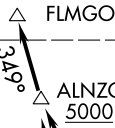


FLMGO TWO DEPARTURE(RNAV) Departure Routes

See following page for transition routes.



TOP ALTITUDE:
5000

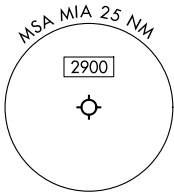
MIAMI DEP CON
126.85 290.325
D-ATIS
133.675
CLNC DEL
135.35
CPDLC
GND CON
121.8 348.6 (8L/R, 12, 26L/R)
127.5 348.6 (9, 27, 30)
MIAMI TOWER
118.3 256.9

TAKEOFF MINIMUMS

- Rwy 8L: Standard with minimum climb of 500'/NM to 520, then minimum climb of 215' to 1400.
- Rwy 8R: Standard with minimum climb of 500'/NM to 520, then minimum climb of 235' to 1400.
- Rwy 9: Standard with minimum climb of 500'/NM to 520, then minimum climb of 240' to 1400.
- Rwy 12: Standard with minimum climb of 500'/NM to 520, then minimum climb of 230' to 1400.
- Rwys 26L/R, 27, 30: Standard with minimum climb of 500'/NM to 520.

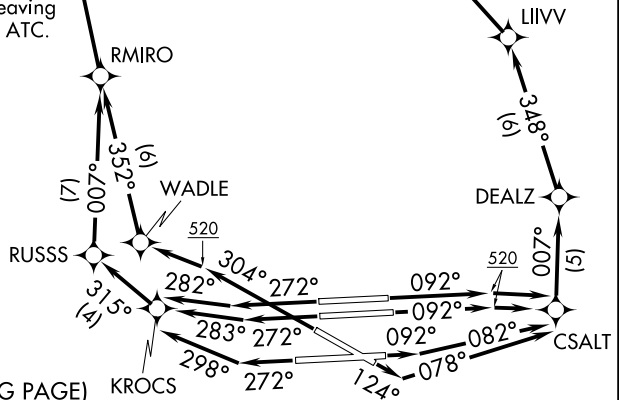
SE-3, 14 MAY 2026 to 11 JUN 2026

SE-3, 14 MAY 2026 to 11 JUN 2026



RNAV 1 - DME/DME/IRU or GPS.
RADAR required.

- NOTE: Jet aircraft only.
- NOTE: Accelerate to 250K until leaving 10000, if unable, advise ATC.
- NOTE: WAPOM Transition ATC assigned except aircraft landing: MCO, DAB, and MLB terminal areas.



NOTE: Chart not to scale.

(CONTINUED ON FOLLOWING PAGE)

(FLMGO2.FLMGO) 25331

AL-257 (FAA)

MIAMI INTL (MIA)
MIAMI, FLORIDA

FLMGO TWO DEPARTURE(RNAV) Transition Routes

MIAMI DEP CON
126.85 290.325
D-ATIS
133.675
CLNC DEL
135.35
CPDLC
GND CON
121.8 348.6 (8L/R, 12, 26L/R)
127.5 348.6 (9, 27, 30)
MIAMI TOWER
118.3 256.9

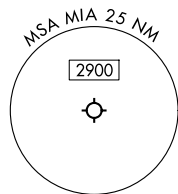
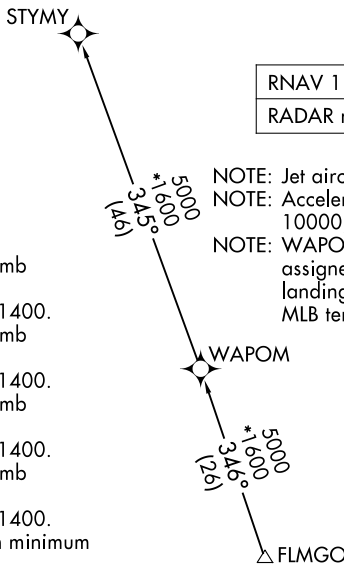
TOP ALTITUDE:
5000

RNAV 1 - DME/DME/IRU or GPS.
RADAR required.

NOTE: Jet aircraft only.
NOTE: Accelerate to 250K until leaving 10000, if unable, advise ATC.
NOTE: WAPOM Transition ATC assigned except aircraft landing: MCO, DAB, and MLB terminal areas.

TAKEOFF MINIMUMS

- Rwy 8L: Standard with minimum climb of 500'/NM to 520, then minimum climb of 215' to 1400.
- Rwy 8R: Standard with minimum climb of 500'/NM to 520, then minimum climb of 235' to 1400.
- Rwy 9: Standard with minimum climb of 500'/NM to 520, then minimum climb of 240' to 1400.
- Rwy 12: Standard with minimum climb of 500'/NM to 520, then minimum climb of 230' to 1400.
- Rwys 26L/R, 27, 30: Standard with minimum climb of 500'/NM to 520.



NOTE: Chart not to scale.

DEPARTURE ROUTE DESCRIPTION

SEE ADDITIONAL REQUIREMENTS ON AAUP

- TAKEOFF RUNWAYS 8L/8R:** Climb on heading 092° to 520, then direct CSALT, then on track 007° to DEALZ, then on track 348° to LIIVV, then on track 323° to GEITH, then on track 339° to cross ALNZO at or above 5000, thence. . . .
- TAKEOFF RUNWAY 9:** Climb on heading 092° to intercept course 082° to CSALT, then on track 007° to DEALZ, then on track 348° to LIIVV, then on track 323° to GEITH, then on track 339° to cross ALNZO at or above 5000, thence. . . .
- TAKEOFF RUNWAY 12:** Climb on heading 124° to intercept course 078° to CSALT, then on track 007° to DEALZ, then on track 348° to LIIVV, then on track 323° to GEITH, then on track 339° to cross ALNZO at or above 5000, thence. . . .
- TAKEOFF RUNWAY 26L:** Climb on heading 272° to intercept course 283° to KROCS, then on track 315° to RUSSSS, then on track 007° to RMIRO, then on track 353° to cross ALNZO at or above 5000, thence. . . .
- TAKEOFF RUNWAY 26R:** Climb on heading 272° to intercept course 282° to KROCS, then on track 315° to RUSSSS, then on track 007° to RMIRO, then on track 353° to cross ALNZO at or above 5000, thence. . . .
- TAKEOFF RUNWAY 27:** Climb on heading 272° to intercept course 298° to KROCS, then on track 315° to RUSSSS, then on track 007° to RMIRO, then on track 353° to cross ALNZO at or above 5000, thence. . . .
- TAKEOFF RUNWAY 30:** Climb on heading 304° to 520, then direct WADLE, then on track 352° to RMIRO, then on track 353° to cross ALNZO at or above 5000, thence. . . .

. . . .on track 349° to FLMGO, then on assigned transition. Maintain 5000. Expect filed altitude within 10 minutes after departure.

STYMY TRANSITION (FLMGO2.STYMY)
WAPOM TRANSITION (FLMGO2.WAPOM)

SE-3, 14 MAY 2026 to 11 JUN 2026

SE-3, 14 MAY 2026 to 11 JUN 2026

FLMGO TWO DEPARTURE(RNAV) Transition Routes
(FLMGO2.FLMGO) 21MAR24

MIAMI, FLORIDA
MIAMI INTL (MIA)