

FOZZZ THREE DEPARTURE (RNAV) 21 MAR 24

FOZZZ THREE DEPARTURE (RNAV) Departure Routes

MIAMI, FLORIDA  
MIAMI INTL (MIA)

MIAMI DEP CON  
126.85 290.325  
D-ATIS  
133.675  
CLNC DEL  
135.35  
CPDLC  
GND CON  
121.8 348.6 (8L/R, 12, 26L/R)  
127.5 348.6 (9, 27, 30)  
MIAMI TOWER  
118.3 256.9

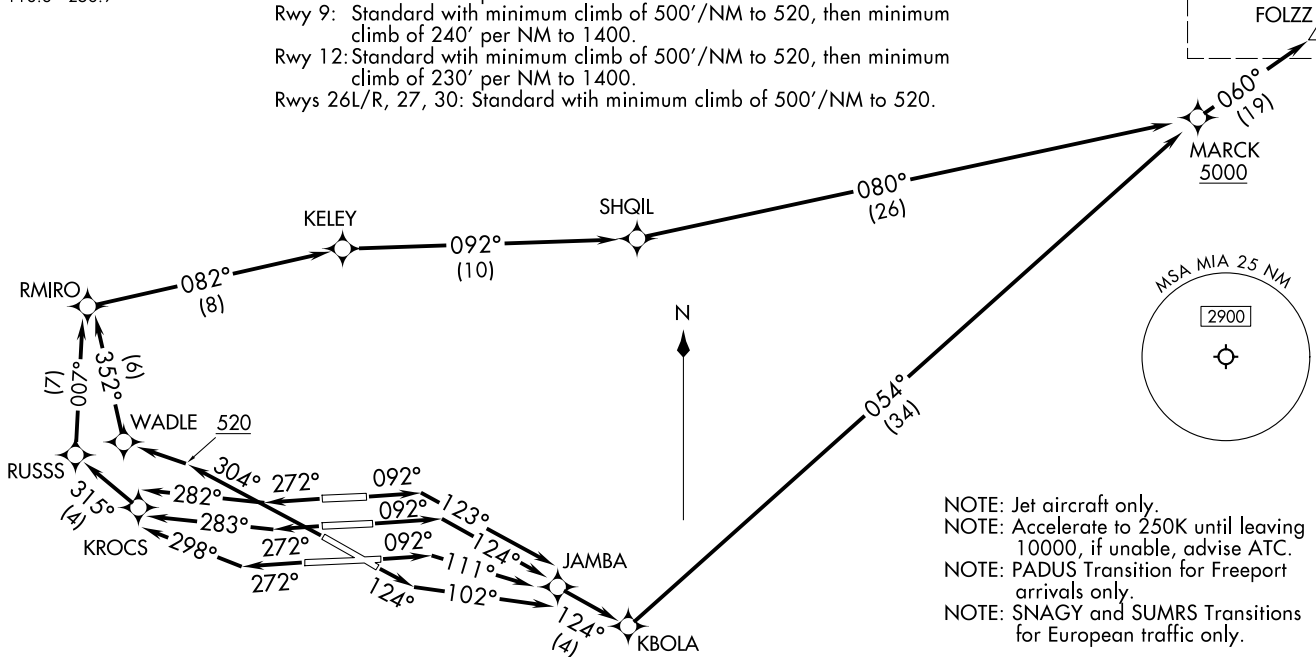
RNAV-1 DME/DME/IRU or GPS.  
SNAGY and SUMRS Transitions: RNAV 1-GPS.  
RADAR required.

**TOP ALTITUDE:  
5000**

**TAKEOFF MINIMUMS**

Rwy 8L: Standard with minimum climb of 500'/NM to 520, then minimum climb of 215' per NM to 1400.  
Rwy 8R: Standard with minimum climb of 500'/NM to 520, then minimum climb of 235' per NM to 1400.  
Rwy 9: Standard with minimum climb of 500'/NM to 520, then minimum climb of 240' per NM to 1400.  
Rwy 12: Standard with minimum climb of 500'/NM to 520, then minimum climb of 230' per NM to 1400.  
Rwys 26L/R, 27, 30: Standard with minimum climb of 500'/NM to 520.

See following page for transition routes.  
FOZZZ



NOTE: Jet aircraft only.  
NOTE: Accelerate to 250K until leaving 10000, if unable, advise ATC.  
NOTE: PADUS Transition for Freeport arrivals only.  
NOTE: SNAGY and SUMRS Transitions for European traffic only.

NOTE: Chart not to scale.

(CONTINUED ON FOLLOWING PAGE)

FOZZZ THREE DEPARTURE (RNAV) 26331

FOZZZ THREE DEPARTURE (RNAV) Departure Routes

MIAMI INTL (MIA)  
MIAMI, FLORIDA

AL-257 (FAA)

(FOLZZ3.FOLZZ) 25331

AL-257 (FAA)

MIAMI INTL (MIA)  
MIAMI, FLORIDA

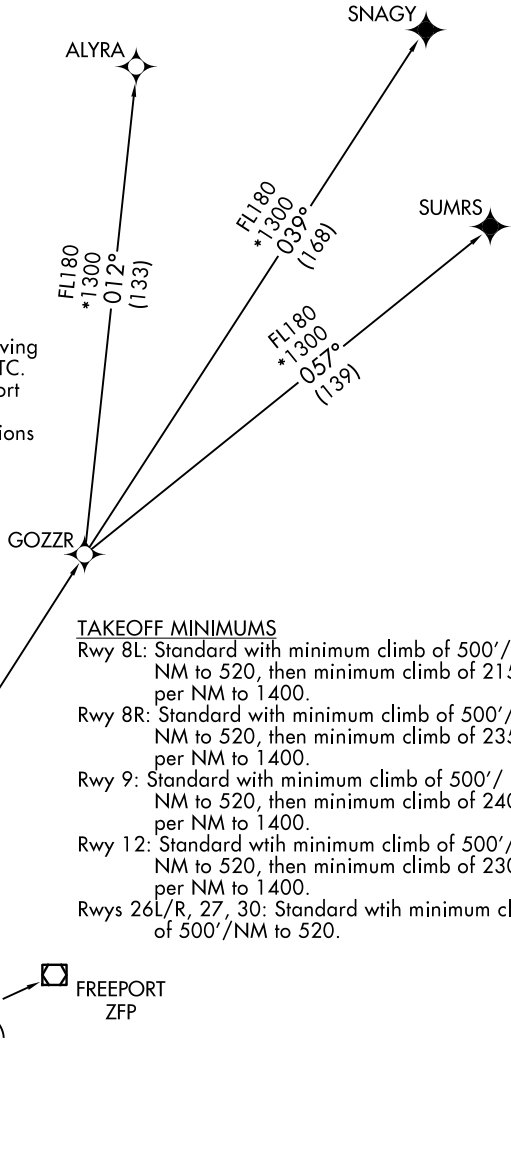
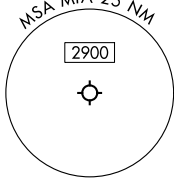
# FOLZZ THREE DEPARTURE (RNAV) Transition Routes

MIAMI DEP CON  
126.85 290.325  
D-ATIS  
133.675  
CLNC DEL  
135.35  
CPDLC  
GND CON  
121.8 348.6 (8L/R, 12, 26L/R)  
127.5 348.6 (9, 27, 30)  
MIAMI TOWER  
118.3 256.9

RNAV-1 DME/DME/IRU or GPS.  
SNAGY and SUMRS Transitions: RNAV 1-GPS.  
RADAR required.

**TOP ALTITUDE:  
5000**

- NOTE: Jet aircraft only.
- NOTE: Accelerate to 250K until leaving 10000, if unable, advise ATC.
- NOTE: PADUS Transition for Freeport arrivals only.
- NOTE: SNAGY and SUMRS Transitions for European traffic only.



### TAKEOFF MINIMUMS

- Rwy 8L: Standard with minimum climb of 500'/NM to 520, then minimum climb of 215' per NM to 1400.
- Rwy 8R: Standard with minimum climb of 500'/NM to 520, then minimum climb of 235' per NM to 1400.
- Rwy 9: Standard with minimum climb of 500'/NM to 520, then minimum climb of 240' per NM to 1400.
- Rwy 12: Standard with minimum climb of 500'/NM to 520, then minimum climb of 230' per NM to 1400.
- Rwys 26L/R, 27, 30: Standard with minimum climb of 500'/NM to 520.

(CONTINUED ON FOLLOWING PAGE)

NOTE: Chart not to scale.

FOLZZ THREE DEPARTURE (RNAV) Transition Routes  
(FOLZZ3.FOLZZ) 21MAR24

MIAMI, FLORIDA  
MIAMI INTL (MIA)

SE-3, 14 MAY 2026 to 11 JUN 2026

SE-3, 14 MAY 2026 to 11 JUN 2026

# FOLZZ THREE DEPARTURE (RNAV)



## DEPARTURE ROUTE DESCRIPTION

SEE ADDITIONAL REQUIREMENTS ON AAUP

TAKEOFF RUNWAY 8L: Climb on heading 092° to intercept course 123° to JAMBA, then on track 124° to KBOLA, then on track 054° to cross MARCK at or above 5000, thence. . .

TAKEOFF RUNWAY 8R: Climb on heading 092° to intercept course 124° to JAMBA, then on track 124° to KBOLA, then on track 054° to cross MARCK at or above 5000, thence. . .

TAKEOFF RUNWAY 9: Climb on heading 092° to intercept course 111° to JAMBA, then on track 124° to KBOLA, then on track 054° to cross MARCK at or above 5000, thence. . .

TAKEOFF RUNWAY 12: Climb on heading 124° to intercept course 102° to JAMBA, then on track 124° to KBOLA, then on track 054° to cross MARCK at or above 5000, thence. . .

TAKEOFF RUNWAY 26L: Climb on heading 272° to intercept course 283° to KROCS, then on track 315° to RUSSS, then on track 007° to RMIRO, then on track 082° to KELEY, then on track 092° to SHQIL, then on track 080° to cross MARCK at or above 5000, thence. . .

TAKEOFF RUNWAY 26R: Climb on heading 272° to intercept course 282° to KROCS, then on track 315° to RUSSS, then on track 007° to RMIRO, then on track 082° to KELEY, then on track 092° to SHQIL, then on track 080° to cross MARCK at or above 5000, thence. . .

TAKEOFF RUNWAY 27: Climb on heading 272° to intercept course 298° to KROCS, then on track 315° to RUSSS, then on track 007° to RMIRO, then on track 082° to KELEY, then on track 092° to SHQIL, then on track 080° to cross MARCK at or above 5000, thence. . .

TAKEOFF RUNWAY 30: Climb on heading 304° to 520, then direct WADLE, then on track 352° to RMIRO, then on track 082° to KELEY, then on track 092° to SHQIL, then on track 080° to cross MARCK at or above 5000, thence. . .

. . . on track 060° to FOLZZ, then on assigned transition, maintain 5000. Expect clearance to filed altitude within 10 minutes after departure.

ALYRA TRANSITION (FOLZZ3.ALYRA)

FREPORT TRANSITION (FOLZZ3.ZFP)

GOZZR TRANSITION (FOLZZ3.GOZZR)

PADUS TRANSITION (FOLZZ3.PADUS)

SNAGY TRANSITION (FOLZZ3.SNAGY)

SUMRS TRANSITION (FOLZZ3.SUMRS)

SE-3, 14 MAY 2026 to 11 JUN 2026

SE-3, 14 MAY 2026 to 11 JUN 2026