

RNAV-1 DME/DME/IRU or GPS.  
 RADAR required for NON-GPS equipped aircraft.  
 RADAR required.

**TOP ALTITUDE:  
5000**

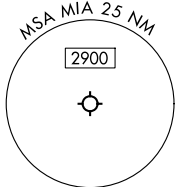
NOTE: Jet aircraft only.  
 NOTE: Accelerate to 250K until leaving 10000, if unable, advise ATC.  
 NOTE: SHAQQ and BAGGS transitions ATC assigned except aircraft departing MIA.

GLADZ4. GLADZJ 31 OCT 24

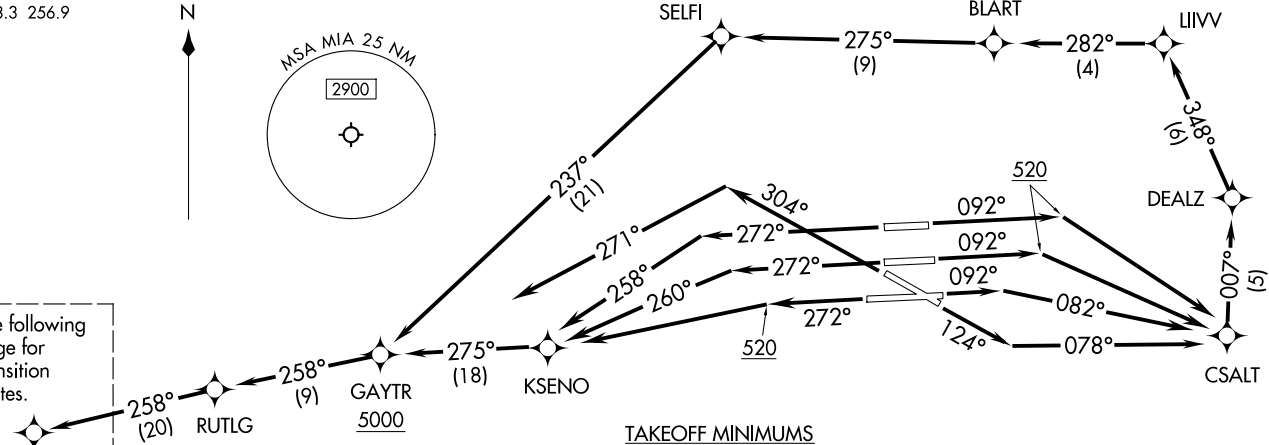
GLADZ FOUR DEPARTURE (RNAV) Departure Routes

MIAMI, FLORIDA  
 MIAMI INTL (MIA)

MIAMI DEP CON  
 125.5 354.1 (Departing W)  
 126.85 290.325 (Departing E)  
 D-ATIS  
 133.675  
 CLNC DEL  
 135.35  
 CPDLC  
 GND CON  
 121.8 348.6 (8L/R, 12, 26L/R)  
 127.5 348.6 (9, 27, 30)  
 MIAMI TOWER  
 118.3 256.9



See following page for transition routes.



**TAKEOFF MINIMUMS**  
 Rwy 8L: Standard with minimum climb of 500'/NM to 520, then minimum climb of 215'/NM to 1400.  
 Rwy 8R: Standard with minimum climb of 500'/NM to 520, then minimum climb of 235'/NM to 1400.  
 Rwy 9: Standard with minimum climb of 500'/NM to 520, then minimum climb of 240'/NM to 1400.  
 Rwy 12: Standard with minimum climb of 500'/NM to 520, then minimum climb of 230'/NM to 1400.  
 Rwys 26L/R, 27, 30: Standard with minimum climb of 500'/NM to 520.

NOTE: Chart not to scale.

(CONTINUED ON FOLLOWING PAGE)

GLADZ4. GLADZJ 25331

AL-257 (FAA)  
 Departure Routes

MIAMI INTL (MIA)  
 MIAMI, FLORIDA

GLADZ FOUR DEPARTURE (RNAV) Transition Routes  
 (GLADZ4, GLADZ) 31OCT24

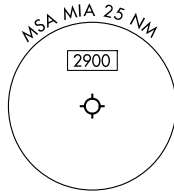
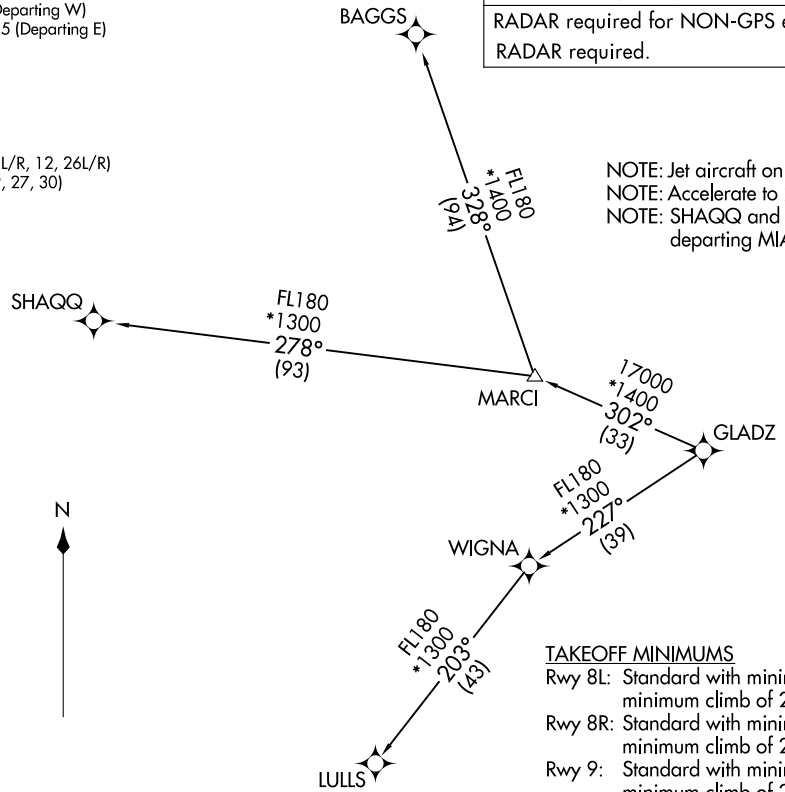
MIAMI, FLORIDA  
 MIAMI INTL (MIA)

MIAMI DEP CON  
 125.5 354.1 (Departing W)  
 126.85 290.325 (Departing E)  
 D-ATIS  
 133.675  
 CLNC DEL  
 135.35  
 CPDLC  
 GND CON  
 121.8 348.6 (8L/R, 12, 26L/R)  
 127.5 348.6 (9, 27, 30)  
 MIAMI TOWER  
 118.3 256.9

RNAV-1 DME/DME/IRU or GPS.  
 RADAR required for NON-GPS equipped aircraft.  
 RADAR required.

**TOP ALTITUDE:  
 5000**

NOTE: Jet aircraft only.  
 NOTE: Accelerate to 250K until leaving 10000, if unable, advise ATC.  
 NOTE: SHAQQ and BAGGS transitions ATC assigned except aircraft departing MIA.



**TAKEOFF MINIMUMS**

- Rwy 8L: Standard with minimum climb of 500'/NM to 520, then minimum climb of 215'/NM to 1400.
- Rwy 8R: Standard with minimum climb of 500'/NM to 520, then minimum climb of 235'/NM to 1400.
- Rwy 9: Standard with minimum climb of 500'/NM to 520, then minimum climb of 240'/NM to 1400.
- Rwy 12: Standard with minimum climb of 500'/NM to 520, then minimum climb of 230'/NM to 1400.
- Rwys 26L/R, 27, 30: Standard with minimum climb of 500'/NM to 520.

NOTE: Chart not to scale. (CONTINUED ON FOLLOWING PAGE)

(GLADZ4, GLADZ) 25331  
 GLADZ FOUR DEPARTURE (RNAV) Transition Routes  
 AL-257 (FAA)

MIAMI INTL (MIA)  
 MIAMI, FLORIDA

# GLADZ FOUR DEPARTURE (RNAV)



## DEPARTURE ROUTE DESCRIPTION SEE ADDITIONAL REQUIREMENTS ON AAUP

TAKEOFF RUNWAYS 8L/R: Climb on heading 092° to 520, then direct CSALT, then on track 007° to DEALZ, then on track 348° to LIIVV, then on track 282° to BLART, then on track 275° to SELFI, then on track 237° to cross GAYTR at or above 5000, thence. . . .

TAKEOFF RUNWAY 9: Climb on heading 092° to intercept course 082° to CSALT, then on track 007° to DEALZ, then on track 348° to LIIVV, then on track 282° to BLART, then on track 275° to SELFI, then on track 237° to cross GAYTR at or above 5000, thence. . . .

TAKEOFF RUNWAY 12: Climb on heading 124° to intercept course 078° to CSALT, then on track 007° to DEALZ, then on track 348° to LIIVV, then on track 282° to BLART, then on track 275° to SELFI, then on track 237° to cross GAYTR at or above 5000, thence. . . .

TAKEOFF RUNWAY 26L: Climb on heading 272° to intercept course 260° to KSENO, then on track 275° to cross GAYTR at or above 5000, thence. . . .

TAKEOFF RUNWAY 26R: Climb on heading 272° to intercept course 258° to KSENO, then on track 275° to cross GAYTR at or above 5000, thence. . . .

TAKEOFF RUNWAY 27: Climb on heading 272° to 520, then direct KSENO, then on track 275° to cross GAYTR at or above 5000, thence. . . .

TAKEOFF RUNWAY 30: Climb on heading 304° to intercept course 271° to cross GAYTR at or above 5000, thence. . . .

. . . .on track 258° to RUTLG, then on track 258° to GLADZ, then on transition.  
Maintain 5000, expect clearance to filed altitude 10 minutes after departure.

BAGGS TRANSITION (GLADZ4.BAGGS)

LULLS TRANSITION (GLADZ4.LULLS)

SHAQQ TRANSITION (GLADZ4.SHAQQ)

SE-3, 14 MAY 2026 to 11 JUN 2026

SE-3, 14 MAY 2026 to 11 JUN 2026