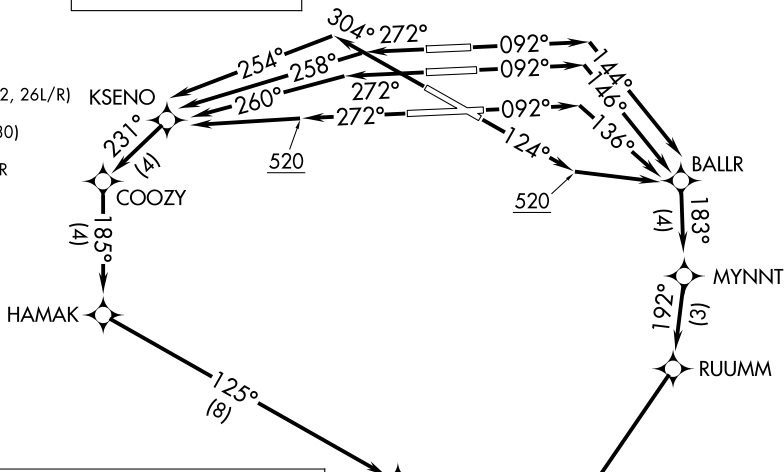


# MAYNR THREE DEPARTURE (RNAV) Departure Routes

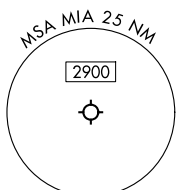
MIAMI DEP CON  
125.5 354.1  
D-ATIS  
133.675  
CLINC DEL  
135.35  
CPDLC  
GND CON  
(Rwys 8L/R, 12, 26L/R)  
121.8 348.6  
(Rwys 9, 27, 30)  
127.5 348.6  
MIAMI TOWER  
118.3 256.9

**TOP ALTITUDE:  
5000**



RNAV 1 - DME/DME/IRU or GPS.  
From SLIPT to MAXIM: RNAV 1- GPS.  
From SLIPT to CANOA: RNAV 1- GPS.  
RADAR required for non-GPS equipped aircraft.  
RADAR required.

NOTE: Jet aircraft only.  
NOTE: Accelerate to 250K until leaving 10000, if unable, advise ATC.



**TAKEOFF MINIMUMS**  
Rwy 8L: Standard with minimum climb of 500'/NM to 520, then minimum climb of 215'/NM to 1400.  
Rwy 8R: Standard with minimum climb of 500'/NM to 520, then minimum climb of 235'/NM to 1400.  
Rwy 9: Standard with minimum climb of 500'/NM to 520, then minimum climb of 240'/NM to 1400.  
Rwy 12: Standard with minimum climb of 500'/NM to 520, then minimum climb of 230'/NM to 1400.  
Rwys 26L/R, 27, 30: Standard with minimum climb of 500'/NM to 520.

See following page for transition routes.  
MAYNR △

(CONTINUED ON FOLLOWING PAGE) NOTE: Chart not to scale.

SE-3, 14 MAY 2026 to 11 JUN 2026

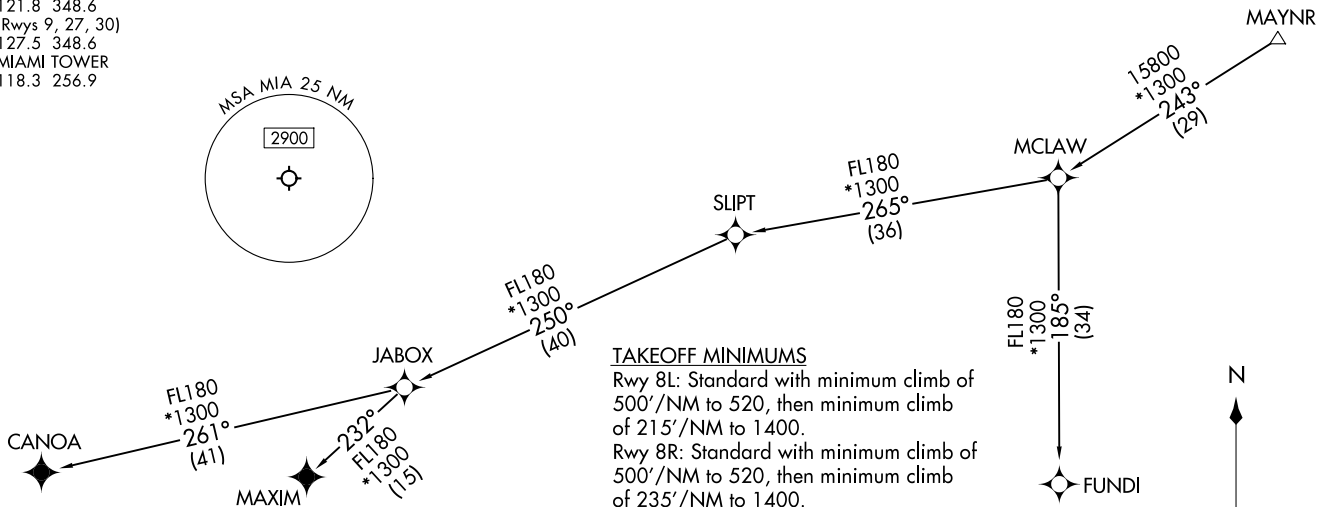
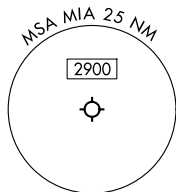
SE-3, 14 MAY 2026 to 11 JUN 2026

MAYNR THREE DEPARTURE (RNAV) Transition Routes  
(MAYNR3.MAYNR) 31OCT24

MIAMI DEP CON  
125.5 354.1  
D-ATIS  
133.675  
CLNC DEL  
135.35  
CPDLC  
GND CON  
(Rwys 8L/R, 12, 26L/R)  
121.8 348.6  
(Rwys 9, 27, 30)  
127.5 348.6  
MIAMI TOWER  
118.3 256.9

**TOP ALTITUDE:  
5000**

RNAV 1 - DME/DME/IRU or GPS.  
From SLIPT to MAXIM: RNAV 1 - GPS.  
From SLIPT to CANOA: RNAV 1 - GPS.  
RADAR required for non-GPS equipped aircraft.  
RADAR required.



TAKEOFF MINIMUMS

Rwy 8L: Standard with minimum climb of 500'/NM to 520, then minimum climb of 215'/NM to 1400.  
 Rwy 8R: Standard with minimum climb of 500'/NM to 520, then minimum climb of 235'/NM to 1400.  
 Rwy 9: Standard with minimum climb of 500'/NM to 520, then minimum climb of 240'/NM to 1400.  
 Rwy 12: Standard with minimum climb of 500'/NM to 520, then minimum climb of 230'/NM to 1400.  
 Rwys 26L/R, 27, 30: Standard with minimum climb of 500'/NM to 520.

NOTE: Jet aircraft only.  
 NOTE: Accelerate to 250K until leaving 10000, if unable, advise ATC.



(CONTINUED ON FOLLOWING PAGE)

NOTE: Chart not to scale.

MIAMI, FLORIDA  
MIAMI INTL (MIA)

(MAYNR3.MAYNR) 24305  
MAYNR THREE DEPARTURE (RNAV) Transition Routes  
A1-257 (FAA)

MIAMI INTL (MIA)  
MIAMI, FLORIDA

# MAYNR THREE DEPARTURE (RNAV)



## DEPARTURE ROUTE DESCRIPTION SEE ADDITIONAL REQUIREMENTS ON AAUP

TAKEOFF RUNWAY 8L: Climb on heading 092° to intercept course 144° to BALLR, then on track 183° to MYNNT, then on track 192° to RUUMM, then on track 215° to cross AUSTI at or above 5000, thence. . . .

TAKEOFF RUNWAY 8R: Climb on heading 092° to intercept course 146° to BALLR, then on track 183° to MYNNT, then on track 192° to RUUMM, then on track 215° to cross AUSTI at or above 5000, thence. . . .

TAKEOFF RUNWAY 9: Climb on heading 092° to intercept course 136° to BALLR, then on track 183° to MYNNT, then on track 192° to RUUMM, then on track 215° to cross AUSTI at or above 5000, thence. . . .

TAKEOFF RUNWAY 12: Climb on heading 124° to 520, then direct to BALLR, then on track 183° to MYNNT, then on track 192° to RUUMM, then on track 215° to cross AUSTI at or above 5000, thence. . . .

TAKEOFF RUNWAY 26L: Climb on heading 272° to intercept course 260° to KSENO, then on track 231° to COOZY, then on track 185° to HAMAK, then on track 125° to LONZO, then on track 202° to cross AUSTI at or above 5000, thence. . . .

TAKEOFF RUNWAY 26R: Climb on heading 272° to intercept course 258° to KSENO, then on track 231° to COOZY, then on track 185° to HAMAK, then on track 125° to LONZO, then on track 202° to cross AUSTI at or above 5000, thence. . . .

TAKEOFF RUNWAY 27: Climb on heading 272° to 520, then direct KSENO, then on track 231° to COOZY, then on track 185° to HAMAK, then on track 125° to LONZO, then on track 202° to cross AUSTI at or above 5000, thence. . . .

TAKEOFF RUNWAY 30: Climb on heading 304° to intercept course 254° to KSENO, then on track 231° to COOZY, then on track 185° to HAMAK, then on track 125° to LONZO, then on track 202° to cross AUSTI at or above 5000, thence. . . .

. . . .on track 202° to MAYNR, then on assigned transition, maintain 5000. Expect clearance to filed altitude within 10 minutes after departure.

CANOA TRANSITION (MAYNR3.CANOA)

FUNDI TRANSITION (MAYNR3.FUNDI)

MAXIM TRANSITION (MAYNR3.MAXIM)

SE-3, 14 MAY 2026 to 11 JUN 2026

SE-3, 14 MAY 2026 to 11 JUN 2026