

MIAMI, FLORIDA

AL-257 (FAA)

25275

WAAS CH 86903 W26A	APP CRS 272°	Rwy Ldg 8600 TDZE 9 Apt Elev 9
--	------------------------	---

RNAV (GPS) RWY 26R

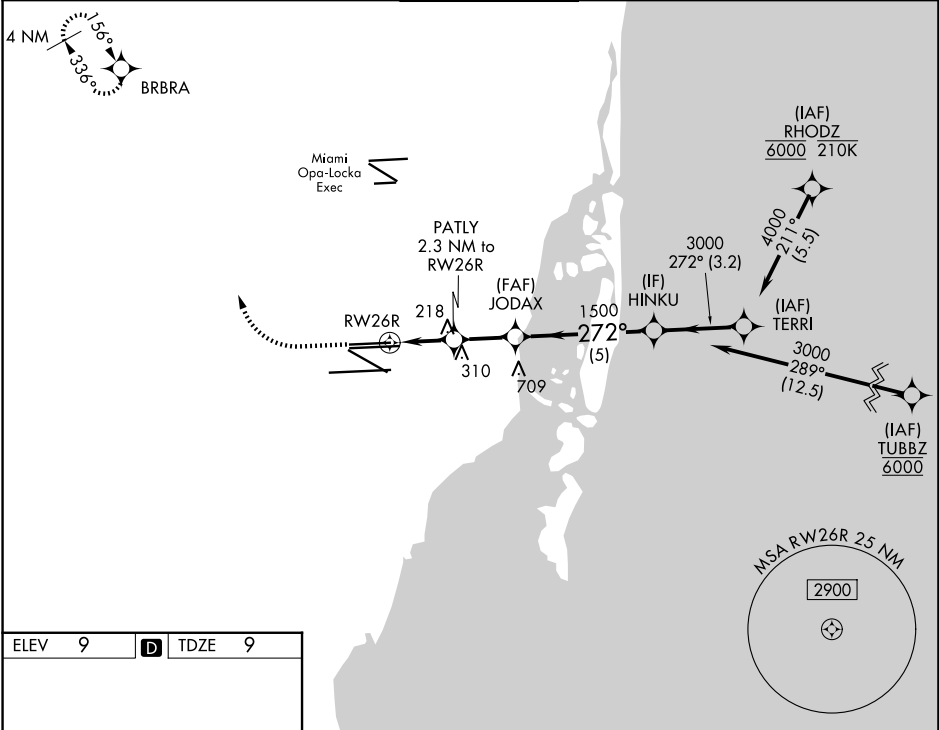
MIAMI INTL (MIA)

RNP APCH - GPS.

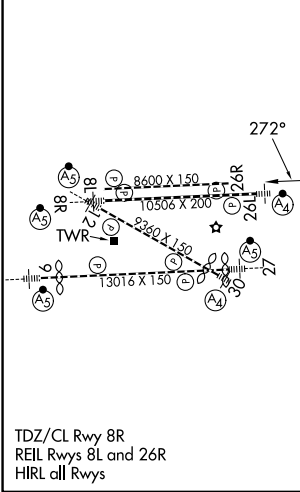
Simultaneous approach authorized. LNAV procedure NA during simultaneous operations. Use of FD or AP required during simultaneous operations. For uncompensated Baro-VNAV systems, LNAV/VNAV NA below 9°C or above 54°C.

MISSED APPROACH: Climb to 800 then climbing right turn to 4000 direct BRBRA and hold, continue climb-in-hold to 4000.

D-ATIS 119.15	MIAMI APP CON 124.85 322.3	MIAMI TOWER 118.3 256.9	GND CON 121.8 (8L/8R/12/26L/26R) 127.5 (9/27/30)	348.6
-------------------------	--------------------------------------	-----------------------------------	--	--------------



ELEV 9	D	TDZE 9
--------	----------	--------



TDZ/CL Rwy 8R
REIL Rwy 8L and 26R
HIRL all Rwy's

800	4000	BRBRA			
			PATLY 2.3 NM to RWY26R	JODAX 1500	HINKU 3000
			1.3 NM to RWY26R		TERRI 4000
				1500	GP 3.00° TCH 60
			1.3	1	2.2
			5	3.2	
CATEGORY	A	B	C	D	
LPV DA		265-3/4	256 (300-3/4)		
LNAV/VNAV DA		432-1 1/4	423 (500-1 1/4)		
LNAV MDA	480-1	471 (500-1)	480-1 3/8	471 (500-1 3/8)	

MIAMI, FLORIDA
Amdt 5 14JUL22

25°48'N-80°17'W

RNAV (GPS) RWY 26R

MIAMI INTL (MIA)

SE-3, 14 MAY 2026 to 11 JUN 2026

SE-3, 14 MAY 2026 to 11 JUN 2026