

MIAMI, FLORIDA

AL-257 (FAA)

25275


| | | |
|--|------------------------|--|
| WAAS CH 81931 W09A | APP CRS 092° | Rwy Ldg 11397 TDZE 8 Apt Elev 9 |
|--|------------------------|--|

RNAV (GPS) RWY 9

MIAMI INTL (MIA)

RNP APCH - GPS.

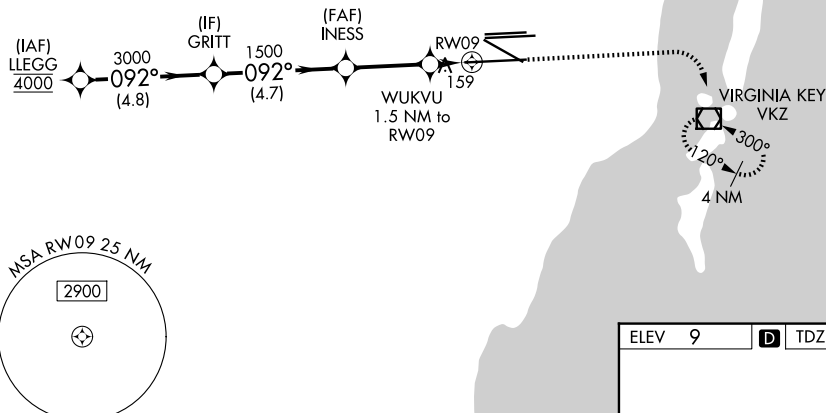
▽ For uncompensated Baro-VNAV systems, LNAV/VNAV NA below 8°C or above 54°C. Simultaneous approach authorized. LNAV procedure NA during simultaneous operations. Use of FD or AP required during simultaneous operations. For inop ALS, increase LPV Cat E visibility to RVR 4000, LNAV/VNAV all Cats visibility to RVR 6000, LNAV Cat E visibility to 1 $\frac{1}{8}$ SM.
*RVR 1800 authorized with use of FD or AP or HUD to DA.

MALSR 

MISSED APPROACH: Climb to 800 then climbing right turn to 3000 direct VKZ VOR/DME and hold, continue climb-in-hold to 3000.

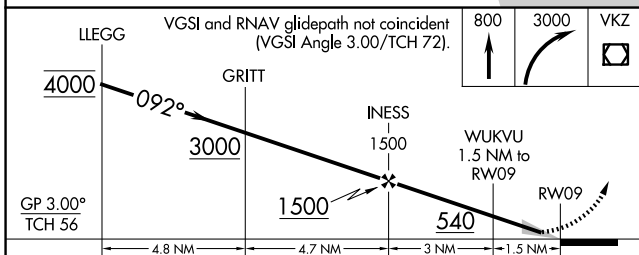
| | | | |
|-------------------------|--------------------------------------|-----------------------------------|---|
| D-ATIS 119.15 | MIAMI APP CON 124.85 322.3 | MIAMI TOWER 118.3 256.9 | GND CON 121.8 (8L/8R/12/26L/26R) 127.5 (9/27/30) 348.6 |
|-------------------------|--------------------------------------|-----------------------------------|---|

CAUTION: Lights on highway 1/4 mile south of final approach course may be mistaken for runway.



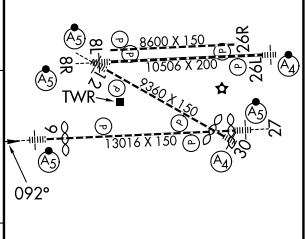
SE-3, 14 MAY 2026 to 11 JUN 2026

SE-3, 14 MAY 2026 to 11 JUN 2026



| | |
|--------|-----------------|
| ELEV 9 | D TDZE 8 |
|--------|-----------------|

| | | | | | |
|--------------|--------|---------------|---------------|---------------|---|
| CATEGORY | A | B | C | D | E |
| LPV DA* | 208/24 | | 200 (200-1/2) | | |
| LNAV/VNAV DA | 426/40 | | 418 (500-3/4) | | |
| LNAV MDA | 460/24 | 452 (500-1/2) | 460/45 | 452 (500-7/8) | |



TDZ/CL Rwy 8R
REIL Rwy 8L and 26R
HIRL all Rwy's

MIAMI, FLORIDA
Amdt 2 14JUL22

25°48'N-80°17'W

MIAMI INTL (MIA) RNAV (GPS) RWY 9