

MIAMI, FLORIDA

AL-257 (FAA)

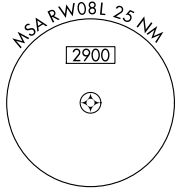
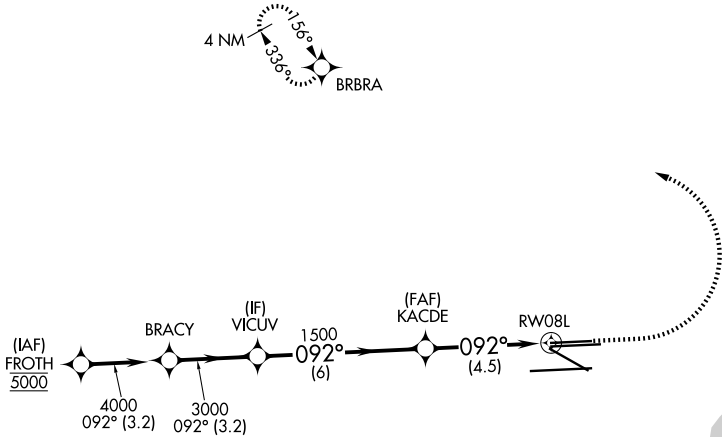
26078

|             |          |             |
|-------------|----------|-------------|
| APP CRS     | Rwy Ldg  | <b>8600</b> |
| <b>092°</b> | TDZE     | <b>9</b>    |
|             | Apt Elev | <b>9</b>    |

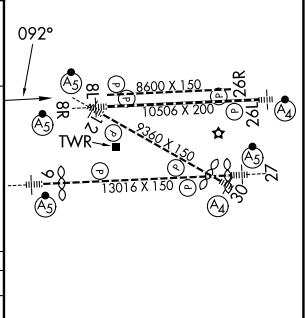
# RNAV (RNP) Y RWY 8L

MIAMI INTL (MIA)

|   |                     |  |  |
|---|---------------------|--|--|
| RNP AR APCH - GPS.  |                     | MISSED APPROACH: Climb to 800 then climbing left turn to 3000 direct BRBRA and hold. |  |
| <p>▼ For uncompensated Baro-VNAV systems, procedure NA below 9°C or above 54°C. Simultaneous approach authorized.</p> |                     |  |  |
| D-ATIS  | MIAMI APP CON       | MIAMI TOWER  | GND CON  |
| <b>119.15</b>   | <b>124.85 322.3</b> | <b>118.3 256.9</b>   | <b>121.8 (8L/8R/12/26L/26R)</b><br><b>127.5 (9/27/30)</b> <b>348.6</b> |



|      |   |      |   |
|------|---|------|---|
| ELEV | 9 | TDZE | 9 |
|------|---|------|---|



|             |        |          |                |   |
|-------------|--------|----------|----------------|---|
| GP 3.00°    |        |          |                |   |
| TCH 60      |        |          |                |   |
|             | 3.2 NM | 6 NM     | 4.5 NM         |   |
| CATEGORY    | A      | B        | C              | D |
| RNP 0.11 DA |        | 312-7/8  | 303 (400-7/8)  |   |
| RNP 0.30 DA |        | 475-13/8 | 466 (500-13/8) |   |

**AUTHORIZATION REQUIRED**

TDZ/RCLS Rwy 8R  
REIL Rwy 8L and 26R  
HIRL all rwy's

MIAMI, FLORIDA  
Orig 19MAR26

25°48'N-80°17'W

# MIAMI INTL (MIA)

## RNAV (RNP) Y RWY 8L

SE-3, 14 MAY 2026 to 11 JUN 2026

SE-3, 14 MAY 2026 to 11 JUN 2026