

MIAMI, FLORIDA

AL-257 (FAA)

25275

WAAS CH <b>40205</b> <b>W27A</b>	APP CRS <b>272°</b>	Rwy Ldg <b>12755</b> TDZE <b>9</b> Apt Elev <b>9</b>
--	------------------------	--

# RNAV (GPS) Y RWY 27

MIAMI INTL (MIA)

RNP APCH-GPS.

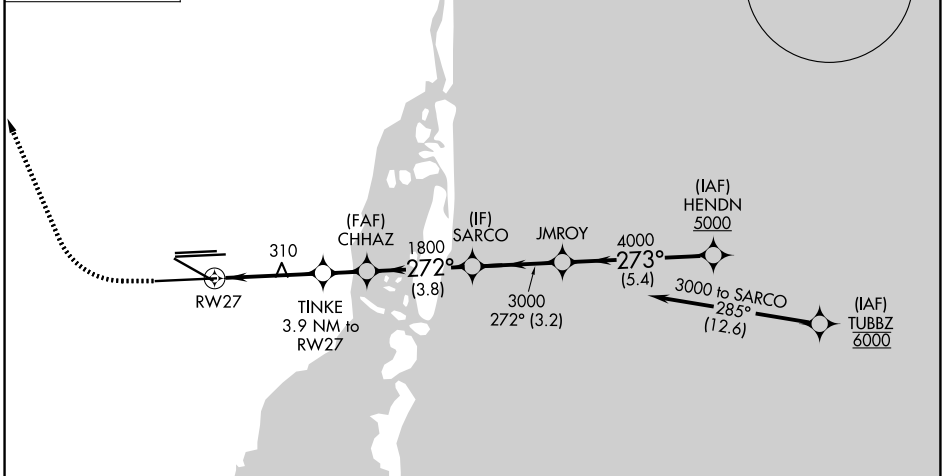
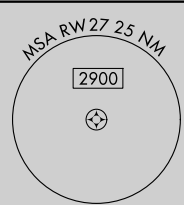
Simultaneous approach authorized. LNAV procedure NA during simultaneous operations. Use of FD or AP required during simultaneous operations. For uncompensated Baro-VNAV systems, LNAV/VNAV NA below 8°C or above 54°C. \*RVR 1800 authorized with use of FD or AP or HUD to DA.

MALSR

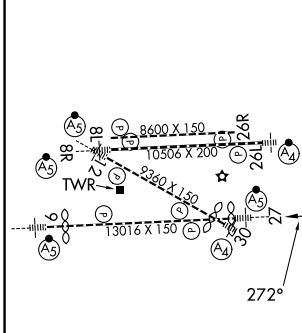


MISSED APPROACH: Climb to 800 then climbing right turn to 4000 direct BRBRA and hold, continue climb-in-hold to 4000.

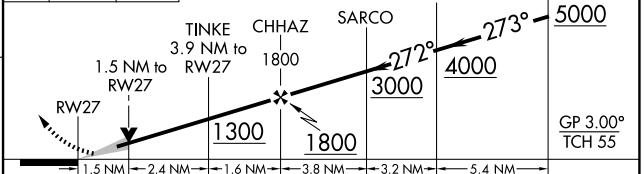
D-ATIS <b>119.15</b>	MIAMI APP CON <b>124.85 322.3</b>	MIAMI TOWER <b>118.3 256.9</b>	GND CON <b>121.8</b> (8L/8R/12/26L/26R) <b>127.5</b> (9/27/30) <b>348.6</b>
-------------------------	--------------------------------------	-----------------------------------	---



ELEV 9	<b>D</b>	TDZE 9
--------	----------	--------



800 4000 BRBRA VGSi and RNAV glidepath not coincident (VGSi Angle 3.00°/TCH 71).



CATEGORY	A	B	C	D
LPV DA*	209/24		200 (200-½)	
LNAV/VNAV DA	439/40		430 (500-¾)	
LNAV MDA	560/24	551 (600-½)	560/60	551 (600-¼)

TDZ/CL Rwy 8R  
REIL Rwy 8L and 26R  
HIRL all Rwy

MIAMI, FLORIDA  
Amdt 4 12AUG21

25°48'N-80°17'W

# RNAV (GPS) Y RWY 27

MIAMI INTL (MIA)

SE-3, 14 MAY 2026 to 11 JUN 2026

SE-3, 14 MAY 2026 to 11 JUN 2026