

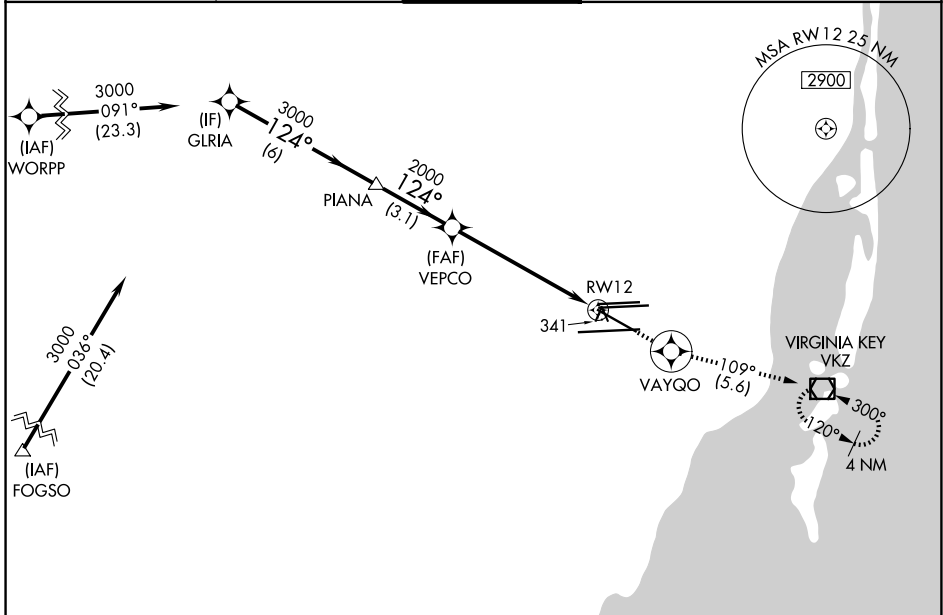
WAAS CH <b>61204</b> <b>W12A</b>	APP CRS <b>124°</b>	Rwy Ldg 8579
		TDZE 9
		Apt Elev 9

# RNAV (GPS) Z RWY 12

MIAMI INTL (MIA)

RNP APCH - GPS.	MALSR	MISSED APPROACH: Climb to 3000 direct VAYQO and on 109° track to VKZ VOR/DME and hold, continue climb-in-hold to 3000.
▼ Rwy 12 helicopter visibility reduction below 3/4 SM NA. For uncompensated Baro-VNAV systems, LNAV/VNAV NA below 9°C or above 54°C. For inop ALS, increase LPV all Cats visibility to RVR 6000, LNAV/VNAV all Cats to 1 3/8 and LNAV Cat A/B to 5500.		

D-ATIS <b>119.15</b>	MIAMI APP CON <b>124.85 322.3</b>	MIAMI TOWER <b>118.3 256.9</b>	GND CON <b>121.8 (8L/8R/12/26L/26R)</b> <b>127.5 (9/27/30)</b>	<b>348.6</b>
-------------------------	--------------------------------------	-----------------------------------	--	--------------



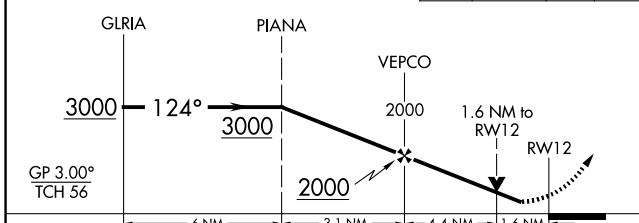
SE-3, 14 MAY 2026 to 11 JUN 2026

SE-3, 14 MAY 2026 to 11 JUN 2026

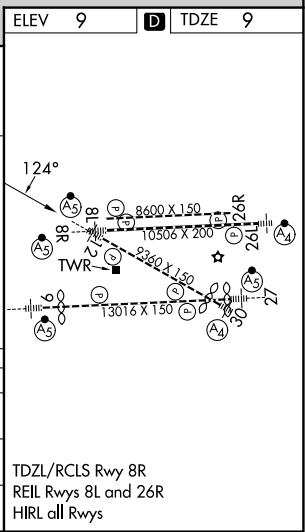
ELEV 9	<b>D</b> TDZE 9
--------	-----------------

VGSI and RNAV glidepath not coincident (VGSI Angle 3.00/TCH 72).

3000	VAYQO	tr	VKZ
		109°	



	6 NM		3.1 NM		4.4 NM		1.6 NM	
CATEGORY	A	B	C	D				
LPV DA	391/40		382 (400-3/4)					
LNAV/VNAV DA	512/55		503 (600-1)					
LNAV MDA	600/40	591 (600-3/4)		600-1 1/4		591 (600-1 1/4)		



TDZL/RCLS Rwy 8R  
REIL Rws 8L and 26R  
HIRL all Rws