

MIAMI, FLORIDA

AL-257 (FAA)

26078

WAAS CH <b>42703</b> <b>W08A</b>	APP CRS <b>092°</b>	Rwy Ldg TDZE Apt Elev	<b>8600</b> <b>9</b> <b>9</b>
--	------------------------	-----------------------------	-------------------------------------

# RNAV (GPS) Z RWY 8L

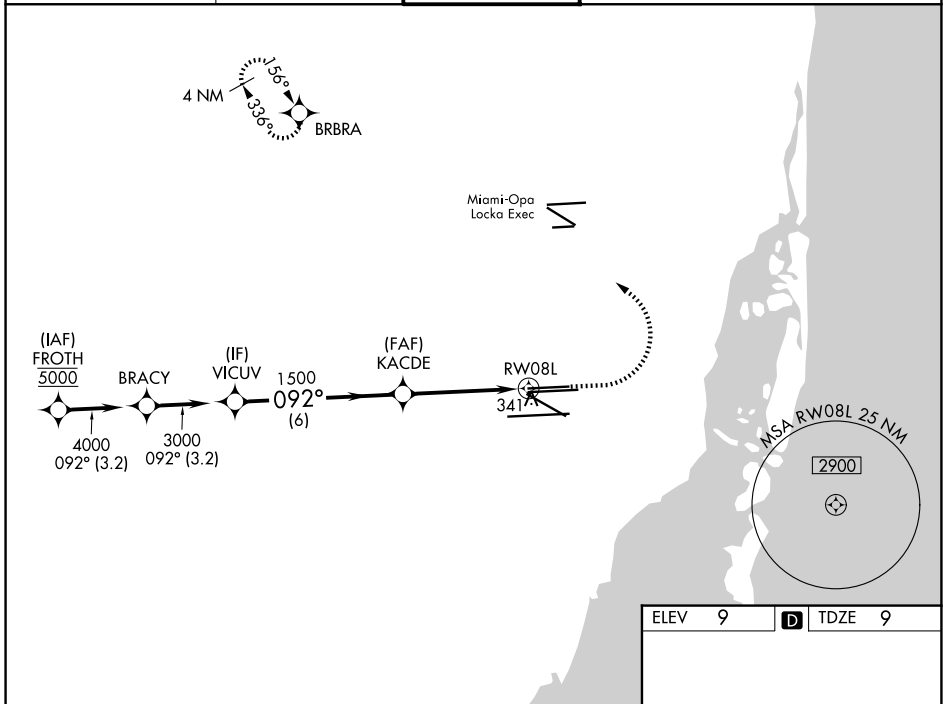
MIAMI INTL (MIA)

RNP APCH - GPS.

▼ Rwy 8L helicopter visibility reduction below 3/4 SM NA. For uncompensated Baro-VNAV systems, LNAV/VNAV NA below 9°C or above 54°C. Simultaneous approach authorized. LNAV procedure NA during simultaneous operations. Use of FD or AP providing RNAV track guidance required during simultaneous operations.

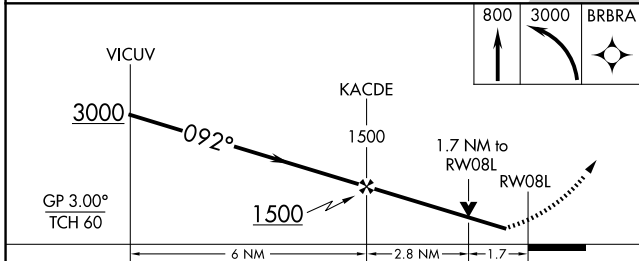
MISSED APPROACH: Climb to 800 then climbing left turn to 3000 direct BRBRA and hold.

D-ATIS <b>119.15</b>	MIAMI APP CON <b>124.85 322.3</b>	MIAMI TOWER <b>118.3 256.9</b>	GND CON <b>121.8</b> (8L/8R/12/26L/26R) <b>127.5</b> (9/27/30)	<b>348.6</b>
-------------------------	--------------------------------------	-----------------------------------	--	--------------

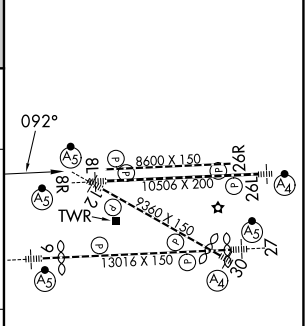


SE-3, 14 MAY 2026 to 11 JUN 2026

SE-3, 14 MAY 2026 to 11 JUN 2026



ELEV 9	<b>D</b> TDZE 9
--------	-----------------



CATEGORY	A	B	C	D
LPV DA	279-7/8		270 (300-7/8)	
LNAV/VNAV DA	513-13/8		504 (600-13/8)	
LNAV MDA	600-1	591 (600-1)	600-13/4	591 (600-13/4)

TDZL/RCLS Rwy 8R  
REIL Rwy 8L and 26R  
HIRL all Rwy's

MIAMI, FLORIDA  
Amdt 3 19MAR26

25°48'N-80°17'W

# RNAV (GPS) Z RWY 8L

MIAMI INTL (MIA)