

MIAMI, FLORIDA

AL-257 (FAA)

26078

WAAS CH 97404 W08B	APP CRS 092°	Rwy Ldg 10506 TDZE 9 Apt Elev 9
--	------------------------	--

RNAV (GPS) Z RWY 8R

MIAMI INTL (MIA)

RNP APCH - GPS

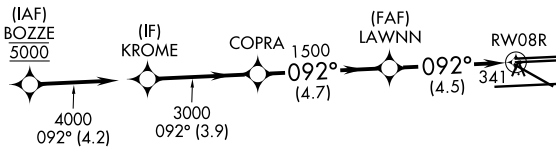
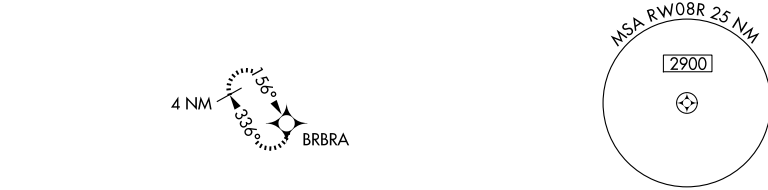
▼ Rwy 8R helicopter visibility reduction below RVR 4000 NA. For uncompensated Baro-VNAV systems, LNAV/VNAV NA below 9°C or above 54°C. Simultaneous approach authorized. For inop ALS, increase LPV all Cats visibility to RVR 4500 and LNAV Cats A and B visibility to RVR 5500.

MALSRL



MISSED APPROACH: Climb to 800 then climbing left turn to 3000 direct BRBRA and hold.

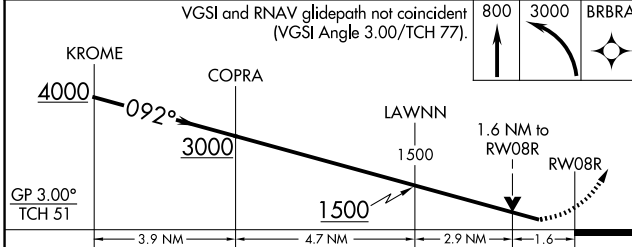
D-ATIS 119.15	MIAMI APP CON 124.85 322.3	MIAMI TOWER 118.3 256.9	GND CON 121.8 (8L/8R/12/26L/26R) 127.5 (9/27/30)	348.6
-------------------------	--------------------------------------	-----------------------------------	--	--------------



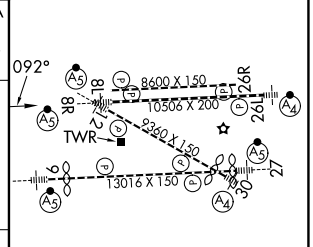
SE-3, 14 MAY 2026 to 11 JUN 2026

SE-3, 14 MAY 2026 to 11 JUN 2026

ELEV 9	D TDZE 9
---------------	------------------------



CATEGORY	A	B	C	D
LPV DA		277/40	268 (300-¾)	
LNAV/VNAV DA		531/55	522 (600-1)	
LNAV MDA	600/40	591 (600-¾)	600-1¼	591 (600-1¼)



TDZL/RCLS Rwy 8R
REIL Rwy 8L and 26R
HIRL all Rwy 8

MIAMI, FLORIDA
Amdt 2 19MAR26

25°48'N-80°17'W

MIAMI INTL (MIA)

RNAV (GPS) Z RWY 8R