

HI-VOR or TACAN RWY 16R

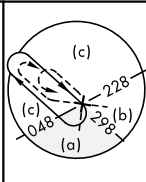
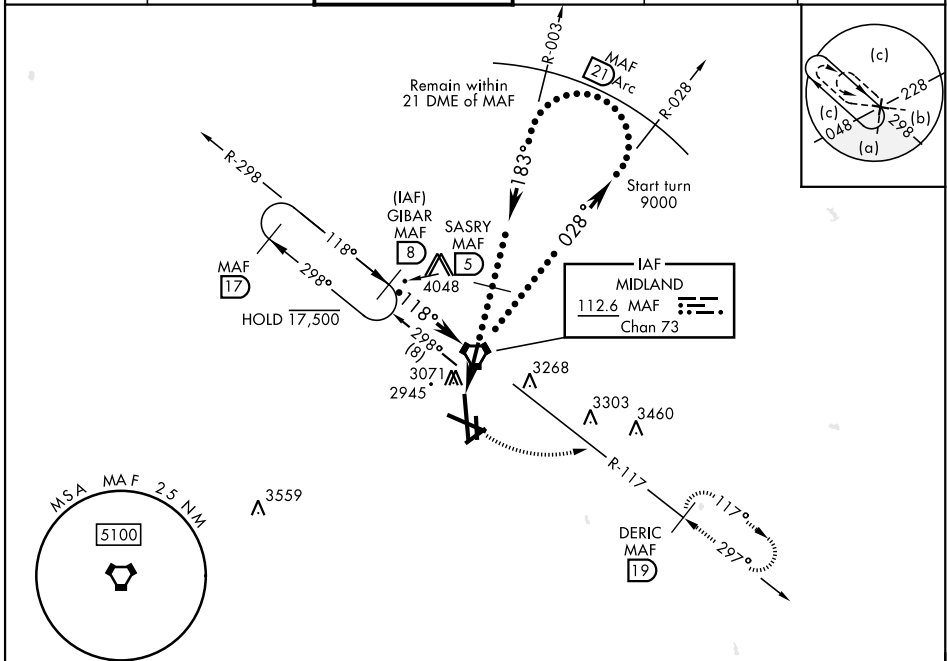
VORTAC MAF 112.6 Chan 73	APCH CRS 183°	Rwy Idg TDZE Arprt Elev 9501 2872 2872	[USAF] MIDLAND INTL AIR AND SPACE PORT (KMAF)
--	-------------------------	--	---

DME required

* Circling Rwy 16L not authorized at night.

MISSED APPROACH: Climb to 3500 then climbing left turn to 4800 on MAF VORTAC R-117 to DERIC/MAF 19° DME and hold.

ATIS ★ 126.8 235.975	APP CON ★ 124.6 290.4	TOWER ★ 118.7 (CTAF) 273.45	GND CON 121.9 348.6	CLNC DEL 118.05 317.65	UNICOM 122.95
--------------------------------	---------------------------------	---------------------------------------	-------------------------------	----------------------------------	-------------------------



EMERG SAFE ALT 100 NM 7000

VGSI and descent angles not coincident GIBAR MAF 8 MAF 3.1 MAF 1.3 MAF 17 MAF VORTAC SASRY MAF 5 14,000 14,000 4000 4600 3.29° TCH 50 3.1 NM	3500 4800 MAF R-117	DERIC MAF 19	ELEV 2872 TDZE 2872
	3020 2899 2902 2976 3025 2974 2878 344 2878 344	183° 16R 9501 x 150 8302 x 150 2888 191 2949 2874 34R 2874 34R	16R 34R
CATEGORY S-16R CIRCUING*	C 3400-1½ 3440-1½ 568 (600-1½)	D 528 3520-2 648 (700-2)	E (600-1½) 3600-2½ 728 (800-2½)

MIDLAND, TEXAS 31° 57' N-102° 12' W MIDLAND INTL AIR AND SPACE PORT (KMAF)

HI-VOR or TACAN RWY 16R

SC-3, 14 MAY 2026 to 11 JUN 2026

SC-3, 14 MAY 2026 to 11 JUN 2026