

WAAS CH <b>66029</b> <b>W34A</b>	APP CRS <b>346°</b>	Rwy Ldg TDZE Apt Elev	<b>9501</b> <b>2858</b> <b>2872</b>
--	------------------------	-----------------------------	---

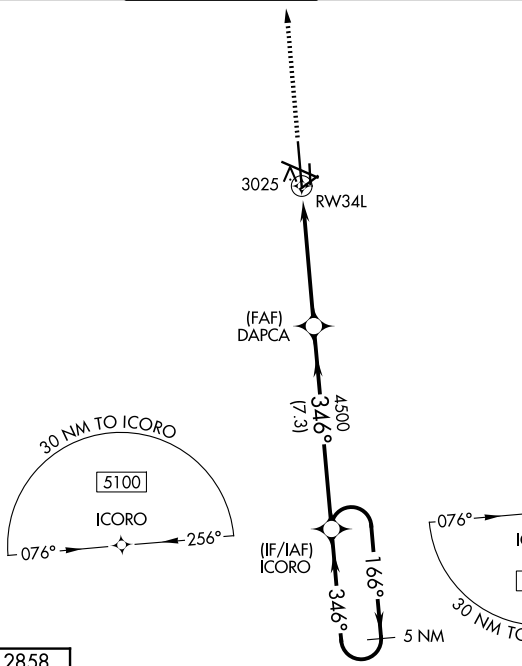
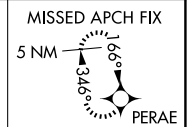
# RNAV (GPS) RWY 34L

MIDLAND INTL AIR AND SPACE PORT (M.A.F.)

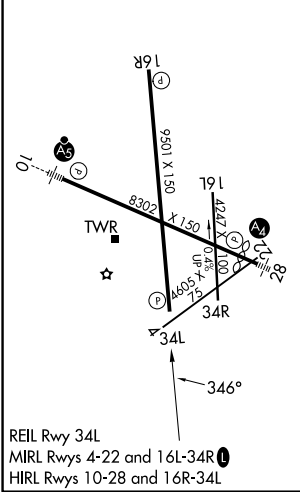
**▽** For uncompensated Baro-VNAV systems, LNAV/VNAV NA below -11°C (13°F) or above 26°C (78°F). Circling Rwy 16L NA at night. DME/DME RNP-0.3 NA.

MISSED APPROACH: Climb to 5100 direct PERAE and hold.

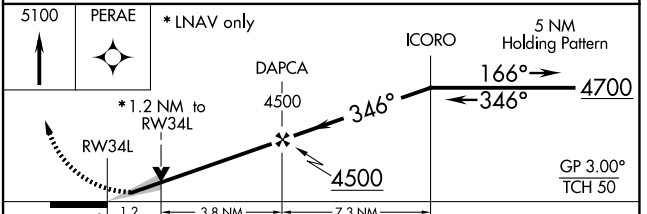
ATIS <b>126.8 235.975</b>	MIDLAND APP CON* <b>124.6 290.4</b>	MIDLAND TOWER* <b>118.7(CTAF) 0273.45</b>	GND CON <b>121.9 348.6</b>	UNICOM <b>122.95</b>
------------------------------	--	--	-------------------------------	-------------------------



ELEV 2872	<b>D</b>	TDZE 2858
-----------	----------	-----------



REIL Rwy 34L  
MIRL Rwys 4-22 and 16L-34R  
HIRL Rwys 10-28 and 16R-34L



CATEGORY	A	B	C	D
LPV DA	3058- <sup>3</sup> / <sub>4</sub>		200 (200- <sup>3</sup> / <sub>4</sub> )	
LNAV/VNAV DA	3203-1 <sup>1</sup> / <sub>8</sub>		345 (400-1 <sup>1</sup> / <sub>8</sub> )	
LNAV MDA	3280-1	422 (500-1)	3280-1 <sup>1</sup> / <sub>4</sub>	422 (500-1 <sup>1</sup> / <sub>4</sub> )
CIRCLING	3440-1	568 (600-1)	3440-1 <sup>1</sup> / <sub>2</sub> 568 (600-1 <sup>1</sup> / <sub>2</sub> )	3520-2 648 (700-2)