

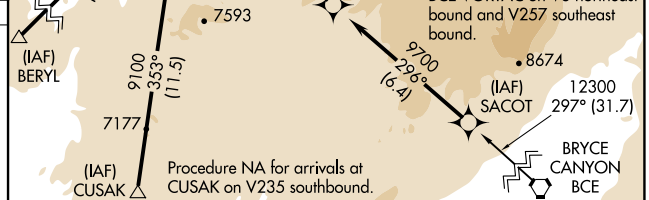
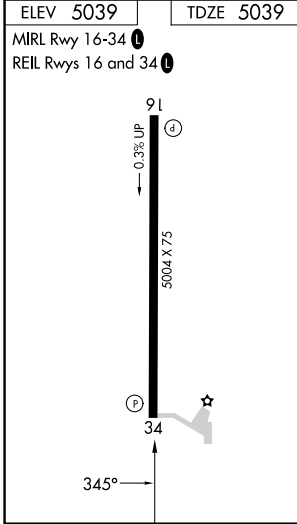
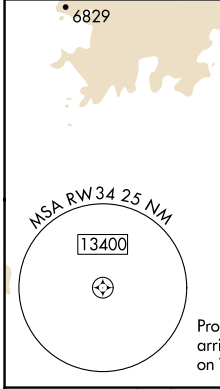
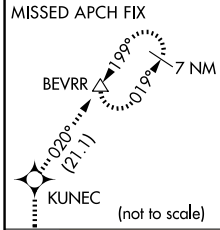
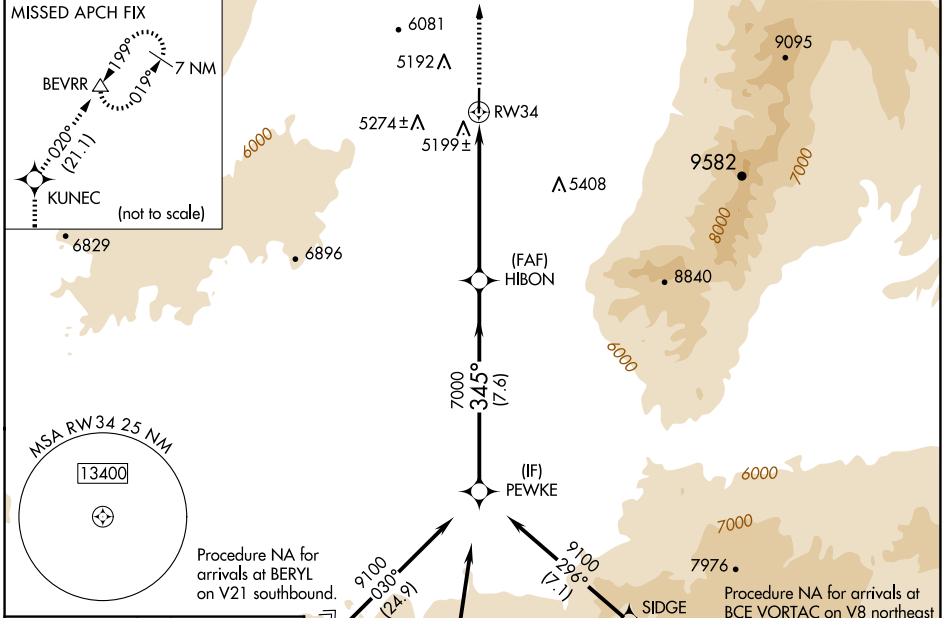
APP CRS	Rwy Ldg	<b>5004</b>
<b>345°</b>	TDZE	<b>5039</b>
	Apt Elev	<b>5039</b>

# RNAV (GPS) RWY 34

MILFORD MUNI/BEN AND JUDY BRISCOE FLD (MLF)

RNP APCH.	When local altimeter setting not received, use Cedar City altimeter setting and increase all MDA 180 feet; increase LNAV Cat C/D visibility ½ mile.	MISSED APPROACH: Climb to 11000 direct KUNEC and on track 020° to BEVRR and hold, continue climb-in-hold to 11000.
-----------	---	--

ASOS <b>135.025</b>	SALT LAKE CENTER <b>125.575 379.275</b>	UNICOM <b>122.8 (CTAF)</b>
------------------------	--	-------------------------------



11000	KUNEC	Ir 020°	BEVRR	PEWKE
CATEGORY	A	B	C	D
LNAV MDA	5460-1	421 (500-1)	5460-1¼	421 (500-1¼)

SW-4, 14 MAY 2026 to 11 JUN 2026

SW-4, 14 MAY 2026 to 11 JUN 2026