

# ILS or LOC RWY 1L

GENERAL MITCHELL INTL (MKE)

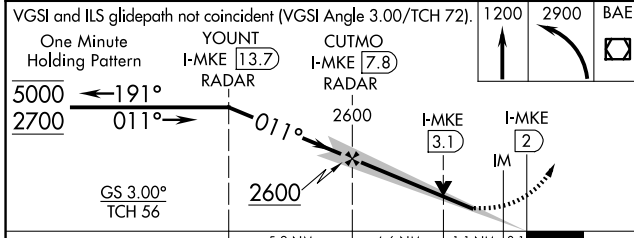
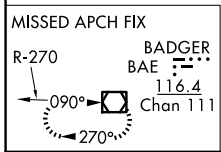
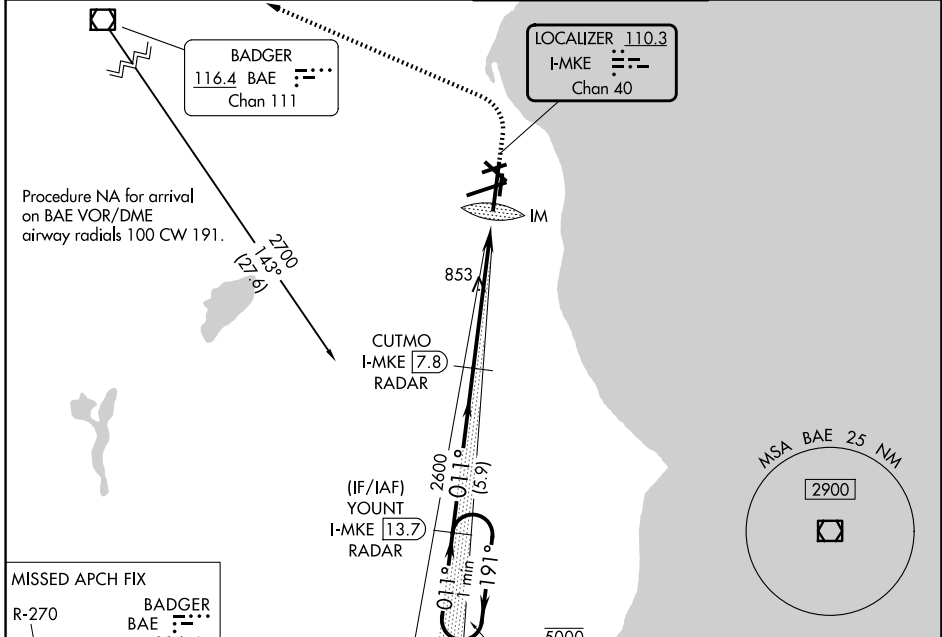
LOC/DME I-MKE <b>110.3</b> Chan 40	APP CRS <b>011°</b>	Rwy Ldg TDZE Apt Elev	1L <b>9080</b> <b>704</b> <b>728</b>	1R <b>4182</b> <b>678</b> <b>728</b>
--	------------------------	-----------------------------	---	---

DME or RADAR required.

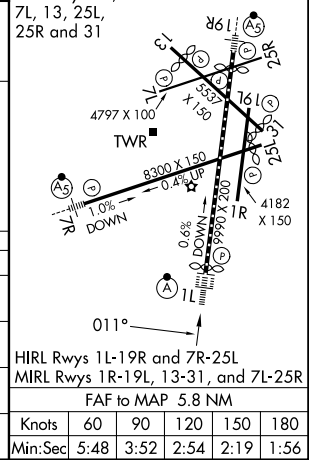


MISSED APPROACH: Climb to 1200 then climbing left turn to 2900 direct BAE VOR/DME and hold.

D-ATIS <b>126.4</b>	MILWAUKEE APP CON <b>126.5 307.0</b>	MILWAUKEE TOWER <b>124.575 269.05</b>	GND CON <b>121.8 263.125</b>
------------------------	---	--	---------------------------------



ELEV 728	TDZE 1L 704
TDZ/CL Rwy 1L	TDZE 1R 678
REIL Rwys 1R, 7L, 13, 25L, 25R and 31	



CATEGORY	A	B	C	D
S-ILS 1L	904/18 200 (200-½)			
S-LOC 1L	1140/24	436 (500-½)	1140/40	436 (500-¾)
SIDESTEP 1R	1140-1	462 (500-1)	1140-1½ 462 (500-1½)	1140-2 462 (500-2)
CIRCLING	1240-1	512 (600-1)	1240-1½ 512 (600-1½)	1360-2 632 (700-2)

EC-3, 14 MAY 2026 to 11 JUN 2026

EC-3, 14 MAY 2026 to 11 JUN 2026