

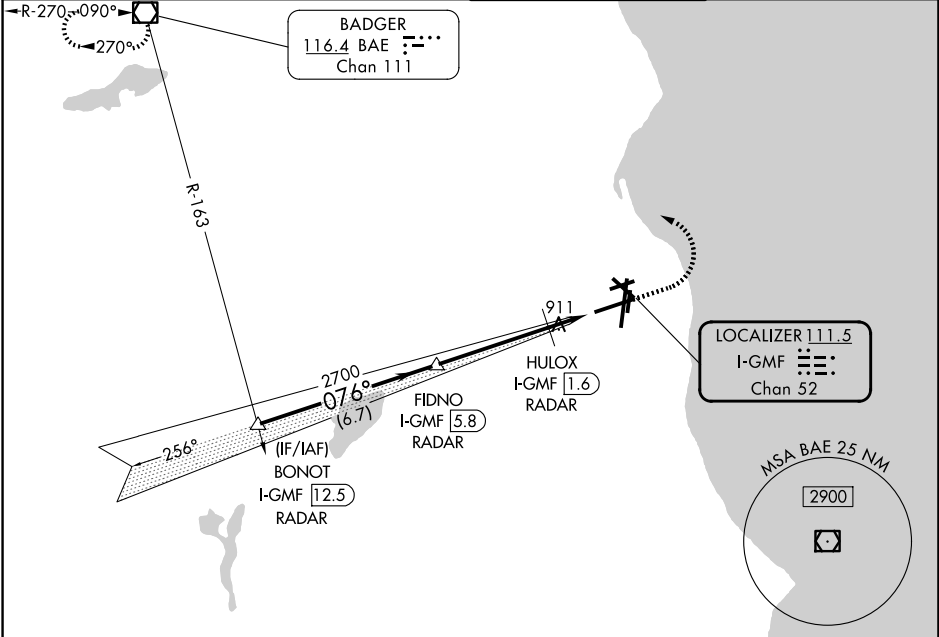
LOC/DME I-GMF 111.5 Chan 52	APP CRS 076°	Rwy Ldg 8012 TDZE 729 Apt Elev 729
---	------------------------	---

ILS or LOC RWY 7R

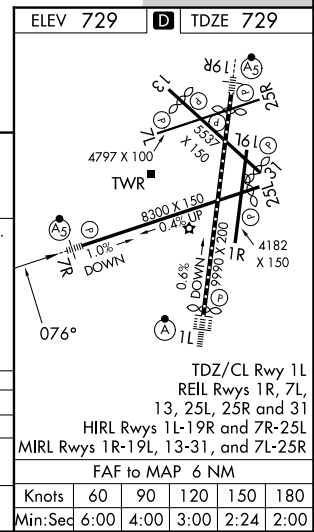
GENERAL MITCHELL INTL (MKE)

RADAR required for procedure entry. DME or RADAR required.	MALSR 	MISSED APPROACH: Climb to 2900 then left turn direct BAE VOR/DME and hold.
# RVR 1800 authorized with use of FD or AP or HUD to DA.		

D-ATIS 126.4	MILWAUKEE APP CON 126.5 307.0	MILWAUKEE TOWER 124.575 269.05	GND CON 121.8 263.125
------------------------	---	--	---------------------------------



BONOT I-GMF 12.5 RADAR		VGSi and ILS glidepath not coincident (VGSi Angle 3.00/TCH 63).		2900	BAE
2900		2700		* LOC only.	
GS 3.00° TCH 50		* I-GMF 1		HULOX I-GMF 1.6 I-GMF DME ANTENNA	
6.7 NM		4.2 NM		0.6 NM 1.2	
CATEGORY	A	B	C	D	
S-ILS 7R #	929/24		200 (200-½)		
S-LOC 7R	1180/24	451 (500-½)	1180/45	451 (500-¾)	
CIRCLING	1240-1	511 (600-1)	1240-1½	1360-2	631 (700-2)



EC-3, 14 MAY 2026 to 11 JUN 2026

EC-3, 14 MAY 2026 to 11 JUN 2026