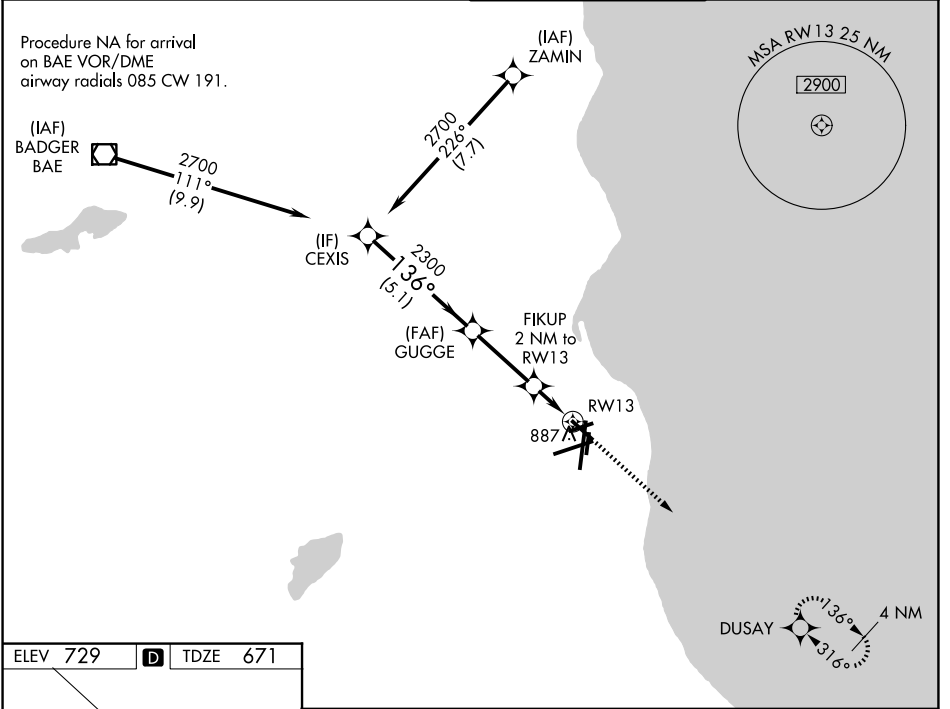


WAAS CH 99342 W13A	APP CRS 136°	Rwy Ldg TDZE Apt Elev	4797 671 729
--	------------------------	-----------------------------	---

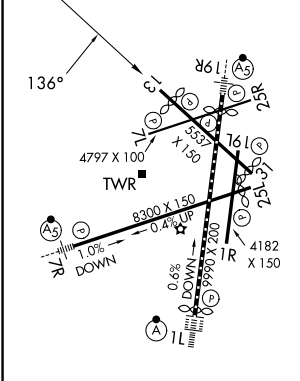
RNAV (GPS) RWY 13

GENERAL MITCHELL INTL (MKE)

RNP APCH.		MILWAUKEE APP CON		MILWAUKEE TOWER		GND CON	
Rwy 13 helicopter visibility reduction below 3/4 SM NA. For uncompensated Baro-VNAV systems, LNAV/VNAV NA below -19°C or above 54°C.		126.5 307.0		124.575 269.05		121.8 263.125	
D-ATIS 126.4							



ELEV 729	D	TDZE 671
-----------------	----------	-----------------



TDZ/CL Rwy 11
REIL Rws 1R, 7L,
13, 25L, 25R, and 31
HIRL Rws 1L-19R and 7R-25L
MIRL Rws 1R-19L, 13-31, and 7L-25R

CEXIS	*LNAV only.			2900	DUSAY
2700	136°	GUGGE	2300	FIKUP 2 NM to RW13	*1.3 NM to RW13
GP 3.00° TCH 54	2300	*1360			RW13
5.1 NM		3 NM		0.7 NM	1.3 NM
CATEGORY	A	B	C	D	
LPV DA	971-1		300 (300-1)		
LNAV/VNAV DA	1189-1 3/8		518 (500-1 3/8)		
LNAV MDA	1140-1	469 (500-1)	1140-1 3/8	469 (500-1 3/8)	
CIRCLING	1240-1	511 (600-1)	1240-1 1/2 511 (600-1 1/2)	1360-2 631 (700-2)	

EC-3, 14 MAY 2026 to 11 JUN 2026

EC-3, 14 MAY 2026 to 11 JUN 2026