

RNAV (RNP) Y RWY 25L

GENERAL MITCHELL INTL (MKE)

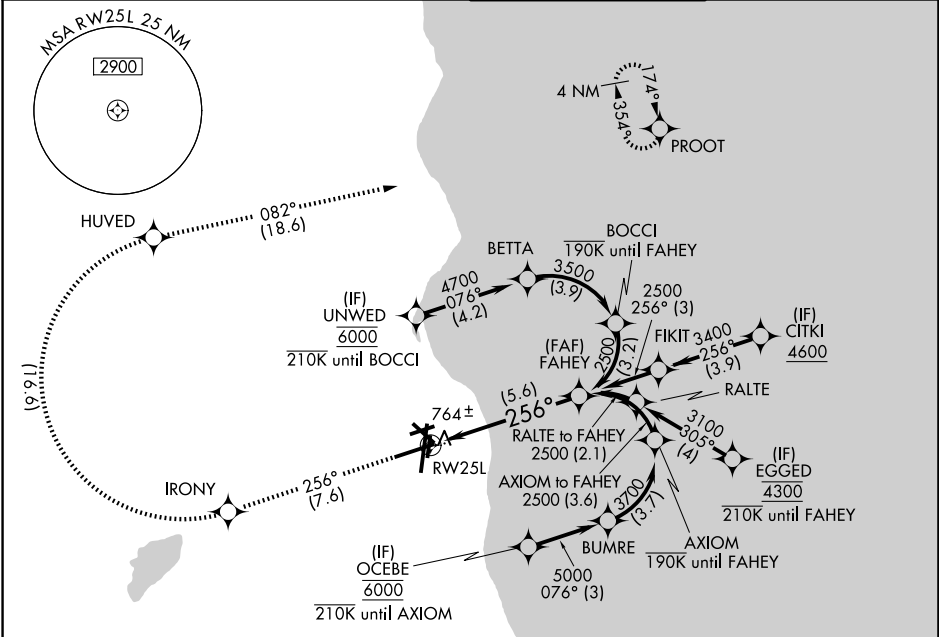
APP CRS	Rwy Ldg	7867
256°	TDZE	683
	Apt Elev	729

RF required. RNP AR APCH.

For uncompensated Baro-VNAV systems, procedure NA below -20°C or above 54°C.

MISSED APPROACH: Climb to 3700 on the RNAV missed approach route to PROOT and hold.

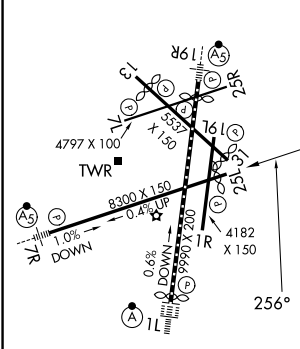
D-ATIS 126.4	MILWAUKEE APP CON 126.5 307.0	MILWAUKEE TOWER 124.575 269.05	GND CON 121.8 263.125
------------------------	---	--	---------------------------------



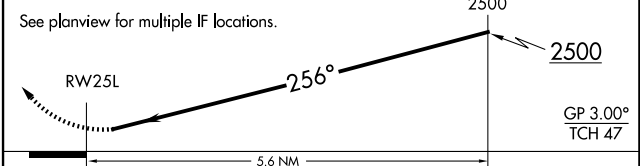
EC-3, 14 MAY 2026 to 11 JUN 2026

EC-3, 14 MAY 2026 to 11 JUN 2026

ELEV 729	D	TDZE 683
----------	----------	----------



3700	IRONY	HUVED	PROOT
↑	◆	◆	◆



CATEGORY	A	B	C	D
RNP 0.10 DA		1087-1 ³ / ₈	404 (400-1 ³ / ₈)	
RNP 0.30 DA		1256-2	573 (600-2)	

AUTHORIZATION REQUIRED