

WAAS CH 69226 W07A	APP CRS 076°	Rwy Ldg TDZE Apt Elev 8012 729 729
----------------------------------------	------------------------	------------------------------------------------------------------------

RNAV (GPS) Z RWY 7R

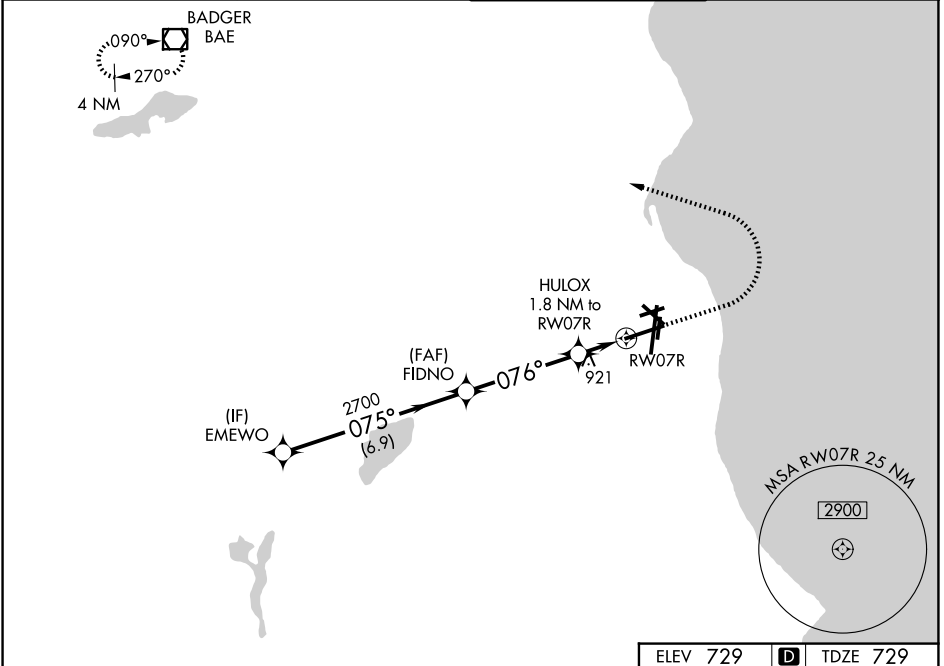
GENERAL MITCHELL INTL (MKE)

▼ For uncompensated Baro-VNAV systems, LNAV/VNAV NA below -20°C (-4°F) or above 54°C (130°F). DME/DME RNP-0.3 NA. # RVR 1800 authorized with use of FD or AP or HUD to DA.

MALSR

MISSED APPROACH: Climb to 2900 then climbing left turn to 3000 direct BAE VOR/DME and hold.

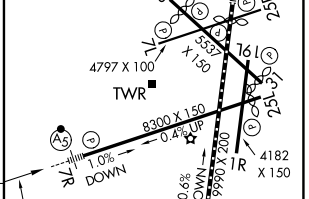
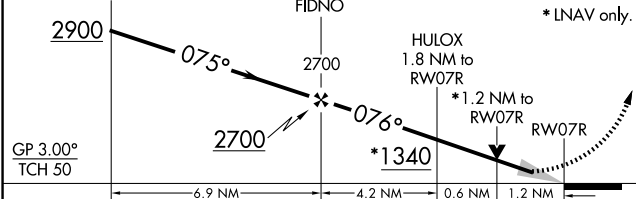
D-ATIS 126.4	MILWAUKEE APP CON 126.5 307.0	MILWAUKEE TOWER 124.575 269.05	GND CON 121.8 263.125
------------------------	-----------------------------------------	------------------------------------------	---------------------------------



EC-3, 14 MAY 2026 to 11 JUN 2026

EC-3, 14 MAY 2026 to 11 JUN 2026

ELEV 729				D	TDZE 729
VGSi and RNAV glidepath not coincident (VGSi Angle 3.00/TCH 63).					
2900		3000		BAE	
* LNAV only.					



CATEGORY	A	B	C	D
LPV DA #		929/24	200 (200-½)	
LNAV/VNAV DA		1232-1¼	503 (600-1¼)	
LNAV MDA	1180/24	451 (500-½)	1180/45	451 (500-¾)
CIRCLING	1240-1	511 (600-1)	1240-1½ 511 (600-1½)	1360-2 631 (700-2)

TDZ/CL Rwy 1L
REIL Rwy 1R, 7L,
13, 25R, 25L and 31
HIRL Rwy 1L-19R and 7R-25L
MIRL Rwy 1R-19L, 13-31 and 7L-25R