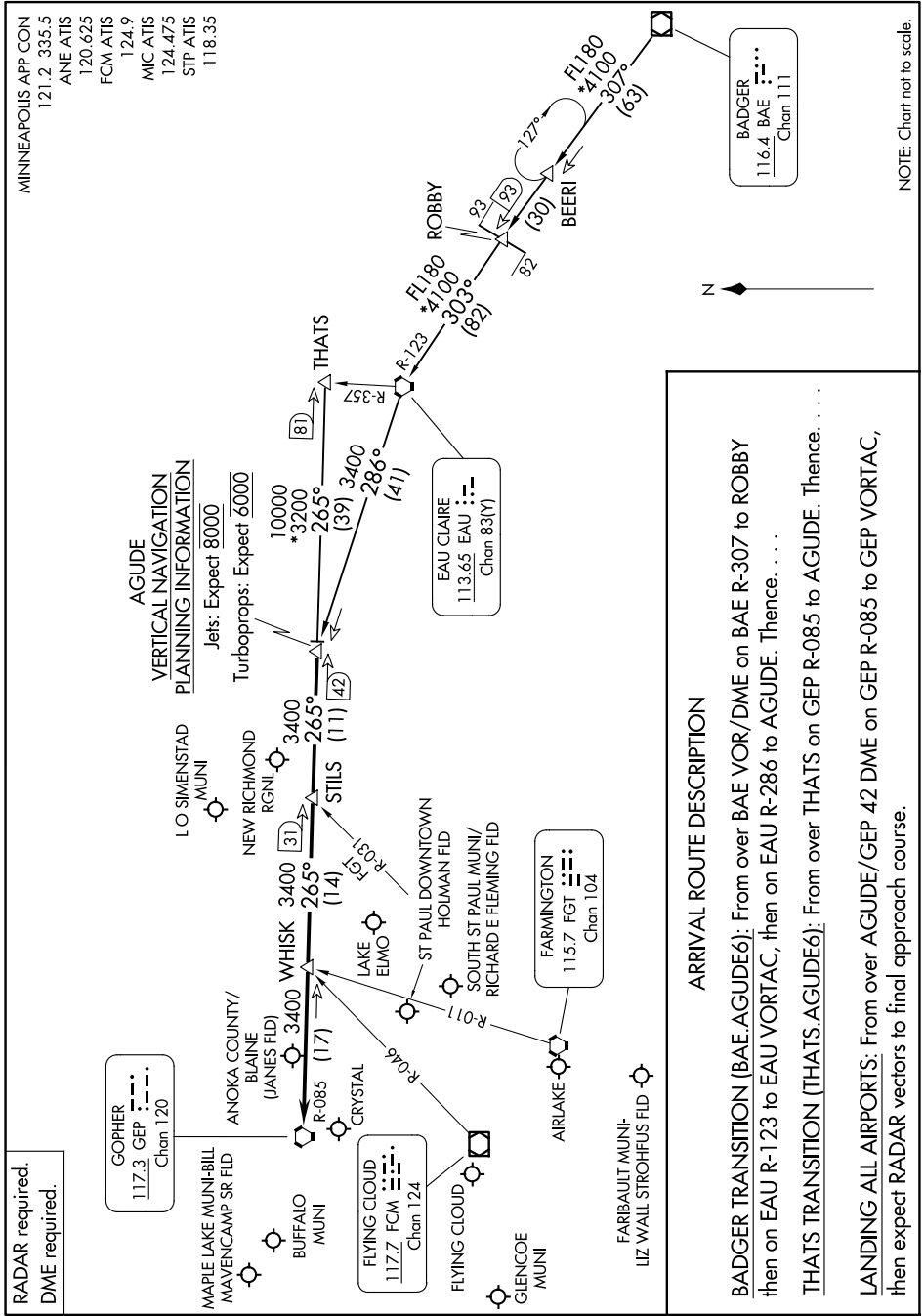


AGUDE SIX ARRIVAL

AL-263 (FAA)

MINNEAPOLIS-ST PAUL, MINNESOTA

NC-1, 14 MAY 2026 to 11 JUN 2026



RADAR required.
DME required.

GORHER
117.3 GEP
Chan 120

FLYING CLOUD
117.7 FCM
Chan 124

FARMINGTON
115.7 FGT
Chan 104

EAU CLAIRE
113.65 EAU
Chan 83(Y)

BADGER
116.4 BAE
Chan 111

AGUDE
VERTICAL NAVIGATION
PLANNING INFORMATION
Jets: Expect 8000
Turboprops: Expect 6000

ARRIVAL ROUTE DESCRIPTION

BADGER TRANSITION (BAE.AGUDE6): From over BAE VOR/DME on BAE R-307 to ROBBY then on EAU R-123 to EAU VORTAC, then on EAU R-286 to AGUDE. Thence. . .

THATS TRANSITION (THATS.AGUDE6): From over THATS on GEP R-085 to AGUDE. Thence. . .

LANDING ALL AIRPORTS: From over AGUDE/GEP 42 DME on GEP R-085 to GEP VORTAC, then expect RADAR vectors to final approach course.

AGUDE SIX ARRIVAL

MINNEAPOLIS-ST PAUL, MINNESOTA

NC-1, 14 MAY 2026 to 11 JUN 2026

NOTE: Chart not to scale.