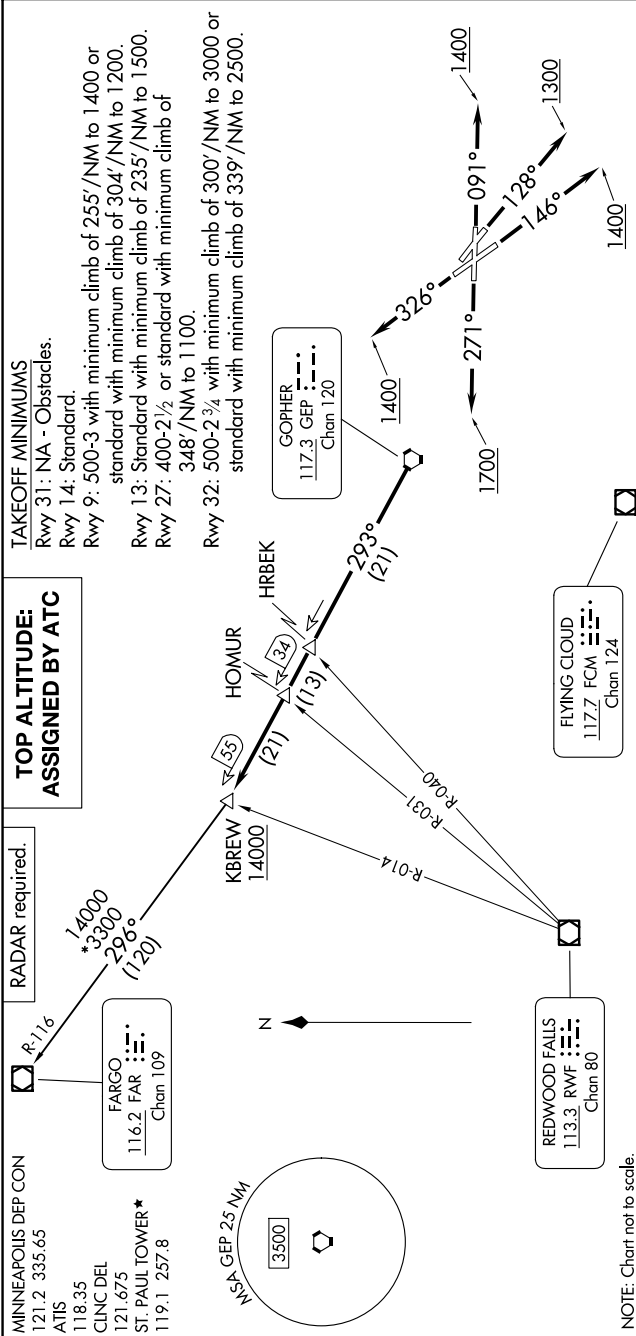


NC-1, 14 MAY 2026 to 11 JUN 2026



RADAR required.

MINNEAPOLIS DEP CON
121.2 335.65
ATIS
118.35
CLINC DEL
121.675
ST. PAUL TOWER*
119.1 257.8

**TOP ALTITUDE:
ASSIGNED BY ATC**

TAKEOFF MINIMUMS
Rwy 31: NA - Obstacles.
Rwy 14: Standard.
Rwy 9: 500-3 with minimum climb of 255'/NM to 1400 or standard with minimum climb of 304'/NM to 1200.
Rwy 13: Standard with minimum climb of 235'/NM to 1500.
Rwy 27: 400-2½ or standard with minimum climb of 348'/NM to 1100.
Rwy 32: 500-2¾ with minimum climb of 300'/NM to 3000 or standard with minimum climb of 339'/NM to 2500.

R-116
FARGO
116.2 FAR
Chan 109

14000

*14000
*13000
293°
(120)

HOMUR
HRBEK
GOPHER
117.3 GEP
Chan 120

293°
(21)

REDWOOD FALLS
113.3 RW F
Chan 80

FLYING CLOUD
117.7 FCM
Chan 124

1700

1400
1400
1400
1300
1400

DEPARTURE ROUTE DESCRIPTION

TAKEOFF RUNWAY 9: Climb on heading 091° to 1400 for RADAR vectors to GEP VORTAC then on depicted route to KBREW, thence. . . .
TAKEOFF RUNWAY 13: Climb on heading 128° to 1300 for RADAR vectors to GEP VORTAC then on depicted route to KBREW, thence. . . .
TAKEOFF RUNWAY 14: Climb on heading 146° to 1400 for RADAR vectors to GEP VORTAC then on depicted route to KBREW, thence. . . .
TAKEOFF RUNWAY 27: Climb on heading 271° to 1700 for RADAR vectors to GEP VORTAC then on depicted route to KBREW, thence. . . .
TAKEOFF RUNWAY 32: Climb on heading 326° to 1400 for RADAR vectors to GEP VORTAC then on depicted route to KBREW, thence. . . .
 . . . on transition. Maintain ATC assigned altitude. Expect filed altitude 10 minutes after departure.
FARGO TRANSITION (KBREW2.FAR): From over KBREW on FAR R-116 to FAR VOR/DME.

NOTE: Chart not to scale.

NC-1, 14 MAY 2026 to 11 JUN 2026