

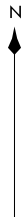
SCHEP ONE DEPARTURE
(SCHEP1 .SCHEP) 08SEP22

(SCHEP1 .SCHEP) 23334
SCHEP ONE DEPARTURE

MINNEAPOLIS DEP CON
121.2 335.65
ATIS
118.35
CLNIC DEL
121.675

**TOP ALTITUDE:
ASSIGNED BY ATC**

RADAR required.

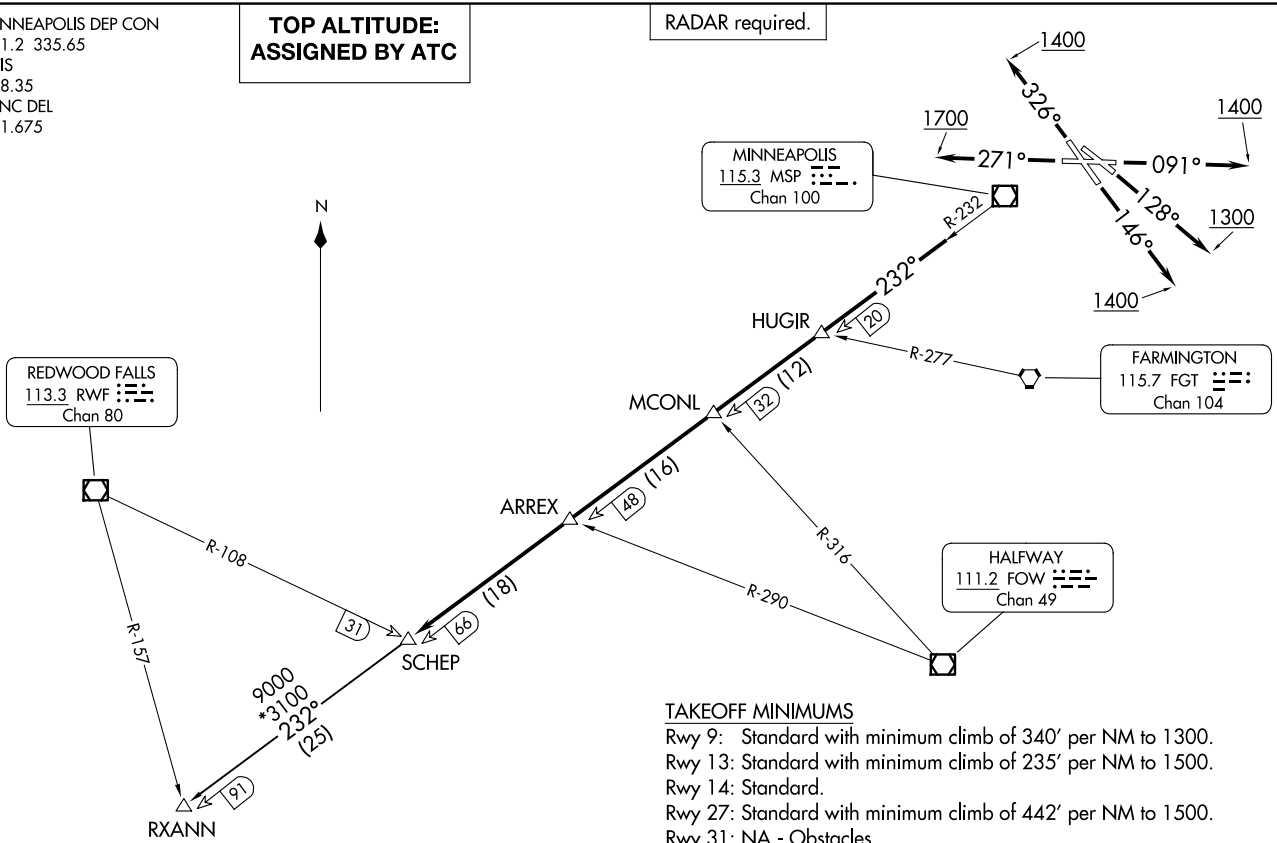


REDWOOD FALLS
113.3 RWF
Chan 80

MINNEAPOLIS
115.3 MSP
Chan 100

FARMINGTON
115.7 FGT
Chan 104

HALFWAY
111.2 FOW
Chan 49



ST PAUL, MINNESOTA
ST PAUL DOWNTOWN HOLMAN FLD (STP)

ST PAUL DOWNTOWN HOLMAN FLD (STP)
ST PAUL, MINNESOTA
AL-263 (FAA)

TAKEOFF MINIMUMS

- Rwy 9: Standard with minimum climb of 340' per NM to 1300.
- Rwy 13: Standard with minimum climb of 235' per NM to 1500.
- Rwy 14: Standard.
- Rwy 27: Standard with minimum climb of 442' per NM to 1500.
- Rwy 31: NA - Obstacles.
- Rwy 32: Standard with minimum climb of 340' per NM to 3000.

(CONTINUED ON FOLLOWING PAGE)

NOTE: Chart not to scale.



DEPARTURE ROUTE DESCRIPTION

TAKEOFF RUNWAY 9: Climb on heading 091° to 1400 for RADAR vectors to assigned fix on MSP R-232, then on depicted route to SCHEP, thence

TAKEOFF RUNWAY 13: Climb on heading 128° to 1300 for RADAR vectors to assigned fix on MSP R-232, then on depicted route to SCHEP, thence

TAKEOFF RUNWAY 14: Climb on heading 146° to 1400 for RADAR vectors to assigned fix on MSP R-232, then on depicted route to SCHEP, thence

TAKEOFF RUNWAY 27: Climb on heading 271° to 1700 for RADAR vectors to assigned fix on MSP R-232, then on depicted route to SCHEP, thence

TAKEOFF RUNWAY 32: Climb on heading 326° to 1400 for RADAR vectors to assigned fix on MSP R-232, then on depicted route to SCHEP, thence

. . . .on transition. Maintain ATC assigned altitude. Expect filed altitude 10 minutes after departure.

RXANN TRANSITION (SCHEP1.RXANN): From over SCHEP INT on MSP R-232 to RXANN INT.

NC-1, 14 MAY 2026 to 11 JUN 2026

NC-1, 14 MAY 2026 to 11 JUN 2026