

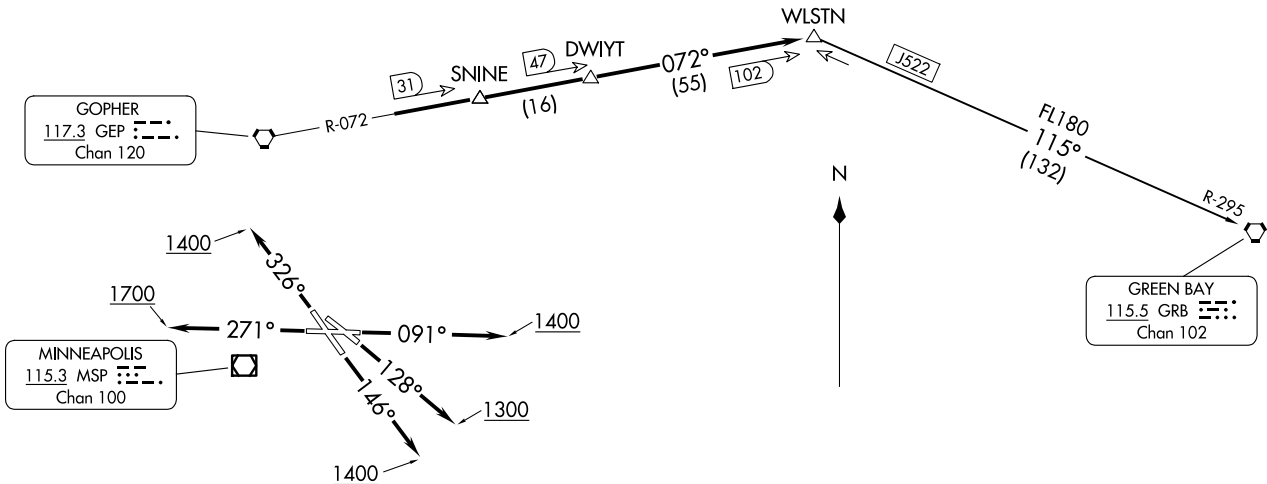
**TOP ALTITUDE:
(JETS) 7000/
(PROPS) 5000**

MINNEAPOLIS DEP CON
121.2 335.65
ATIS
118.35
CLNC DEL
121.675
ST. PAUL TOWER★
119.1 257.8

GOPHER
117.3 GEP
Chan 120

MINNEAPOLIS
115.3 MSP
Chan 100

GREEN BAY
115.5 GRB
Chan 102



TAKEOFF MINIMUMS

- Rwy 9: Standard with minimum climb of 340' per NM to 1300.
- Rwy 13: Standard with minimum climb of 235' per NM to 1500.
- Rwy 14: Standard.
- Rwy 27: 600-2 or standard with minimum climb of 442' per NM to 1500.
- Rwy 31: NA-Obstacles.
- Rwy 32: Standard with minimum climb of 340' per NM to 3000.

(CONTINUED ON FOLLOWING PAGE)

NOTE: RADAR required.

NOTE: Chart not to scale.

WLSTN SEVEN DEPARTURE
(WLSTN7.WLSTN) 17AUG17

ST. PAUL, MINNESOTA
ST. PAUL DOWNTOWN HOLMAN FLD (STP)

(WLSTN7.WLSTN) 23334
WLSTN SEVEN DEPARTURE

ST. PAUL DOWNTOWN HOLMAN FLD (STP)
AL-263 (FAA)
ST. PAUL, MINNESOTA



DEPARTURE ROUTE DESCRIPTION

TAKEOFF RUNWAY 9: Climb heading 091° to 1400 for RADAR vectors to GEP R-072 to WLSTN/GEP 102 DME, thence

TAKEOFF RUNWAY 13: Climb heading 128° to 1300 for RADAR vectors to GEP R-072 to WLSTN/GEP 102 DME, thence

TAKEOFF RUNWAY 14: Climb heading 146° to 1400 for RADAR vectors to GEP R-072 to WLSTN/GEP 102 DME, thence

TAKEOFF RUNWAY 27: Climb heading 271° to 1700 for RADAR vectors to GEP R-072 to WLSTN/GEP 102 DME, thence

TAKEOFF RUNWAY 32: Climb heading 326° to 1400 for RADAR vectors to GEP R-072 to WLSTN/GEP 102 DME, thence

. . . .on assigned transition or assigned route. Expect clearance to filed altitude/flight level 10 (ten) minutes after departure.

GREEN BAY TRANSITION (WLSTN7.GRB): From over WLSTN on GRB R-295 to GRB VORTAC.

NC-1, 14 MAY 2026 to 11 JUN 2026

NC-1, 14 MAY 2026 to 11 JUN 2026